



RINGLOCK SYSTEM

U.K, Australia and New Zealand

WE
PROVIDE
SCAFFOLDING
GLOBALLY.

Building the Future.

CORONET 2025

TABLE OF CONTENTS



INTRODUCTION 02

OVERVIEW 03-05

RINGLOCK 06-68

Ringlock Standard	06
Ringlock Standard with Hanging Spigot	07
Ringlock Ledger	08-09
Ringlock Transom	11
Ringlock Reinforced Ledger	12
Ringlock Bridging Ledger	13-15
Ringlock MID Transom	16-17
Ringlock Ledger to Plank Transom	18-21
Ringlock Diagonal Braces	22-25
Work Platforms	26-32
Aluminum Plywood Access Deck	33
Aluminum Access Deck	34
Ringlock Side Bracket	35-37
Steel Toe Board	38-40
Wooden Toe Board	41
Starter/ Base Collar	42
Adjustable Base Jack	43
Swivel Base Jack	44
Adjustable Caster Adapert	45
Caster Wheel	46
U Head	47
Ringlock Lattice Beam	48-49
Guardrail Post/Standard	50-51
Starter/ Base Collar	52-53
Steel Stair with Handrails	54
Aluminum Platform Stair	55
Platform Stairs Guardrails	56-57
Monkey Ladder	58
Ladder and Ladder Bracket	59
Ringlock Accessories	60-69



ABOUT CORONET

Since its inception in the scaffolding business, the 'Coronet®' brand has stood for quality. With nearly two decades of successful operation, Coronet has emerged as the world's largest exporter of scaffolding to the North American market over the past years, as per the latest publicly available custom data.

Coronet USA serves as the American division of the Coronet Scaffolding Group. Our corporate offices are based in Suzhou, China, while our American operations are directed from offices in Houston, TX.

As a leading player in the scaffolding industry, we prioritize the well-being and happiness of our employees, whom we consider the cornerstone of our success. With values centered on 'customer first,' 'integrity,' and 'team cooperation,' Coronet stands out as an active, innovative, and passionate company. We extend our gratitude to all those who have placed their trust in Coronet over the years, and we welcome new customers to join us in our journey.



CORONET'S VALUES
Customers first, Integrity, Teamwork.



OVERVIEW

Coronet Quality

Coronet Products hold comprehensive product liability insurance provided by esteemed US carriers. We prioritize exceeding industry standards through our stringent quality assurance programs, ensuring that our scaffolding stands as the safest and most reliable worldwide.

At Coronet, we boast an in-house laboratory designed not just for material (mill) tests but also for diverse load testing, equipped with Transcell® load sensors. Our test engineers undergo rigorous training from accredited third parties, and we meticulously document and file test reports for complete traceability.

We firmly believe in hands-on action and going above and beyond.

MATERIAL

Coronet only uses the high tensile steel S355 (The equivalent A572 Gr. 50, USA, ASTM. (Min.yield of 51,000 psi/ min. tensile of 68,000 psi) for main parts in our products. Our steel is certified and test for every batch, meeting and exceeding industry standards.

WELDING

Robot welding process monitoring and control involves routine or continuous monitoring of process variables, particularly current, time and force.

FINISHING

Coronet system scaffolds are finished and protected by hot-dipped zinc galvanized. This finishing method ensures maximum surface durability.

TRACEABILITY

All system scaffolds are imprinted with traceable codes to ensure quality assurance.

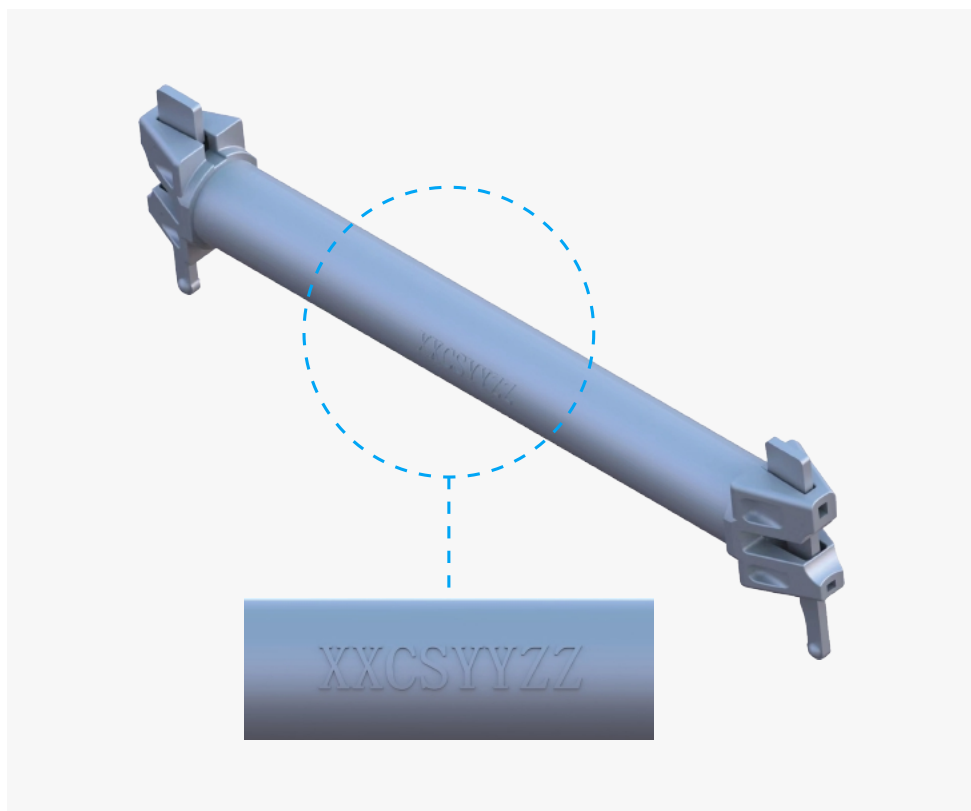
OVERVIEW

Product Traceability

All coronet components are stamped with traceability marks.

Batch number: XXCSYYZZ

XX=Serial Number CS= Coronet Scaffold YY=Month of Manufacture ZZ= Year of Manufacture

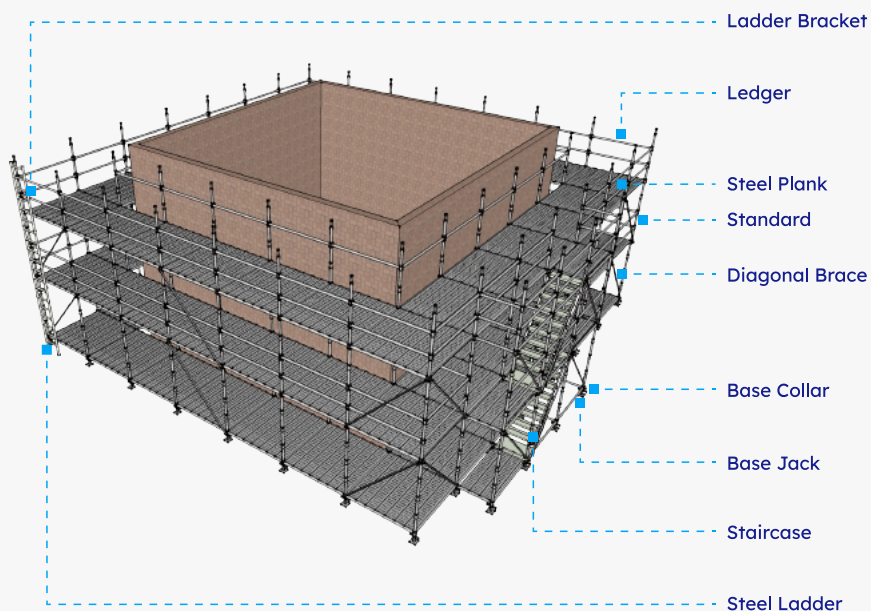


OVERVIEW

Component

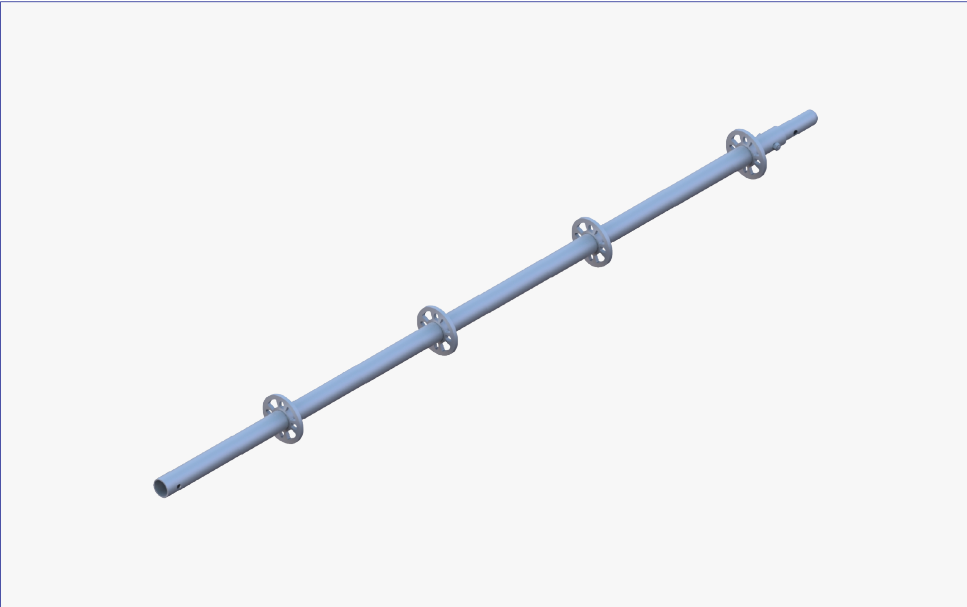
Component Identification

The following diagram represents the most common Ringlock components used. Most scaffold structure are made from these basic components yet the Ringlock system comes with a variety of accessories for all your scaffolding requirements.



Ringlock Standard

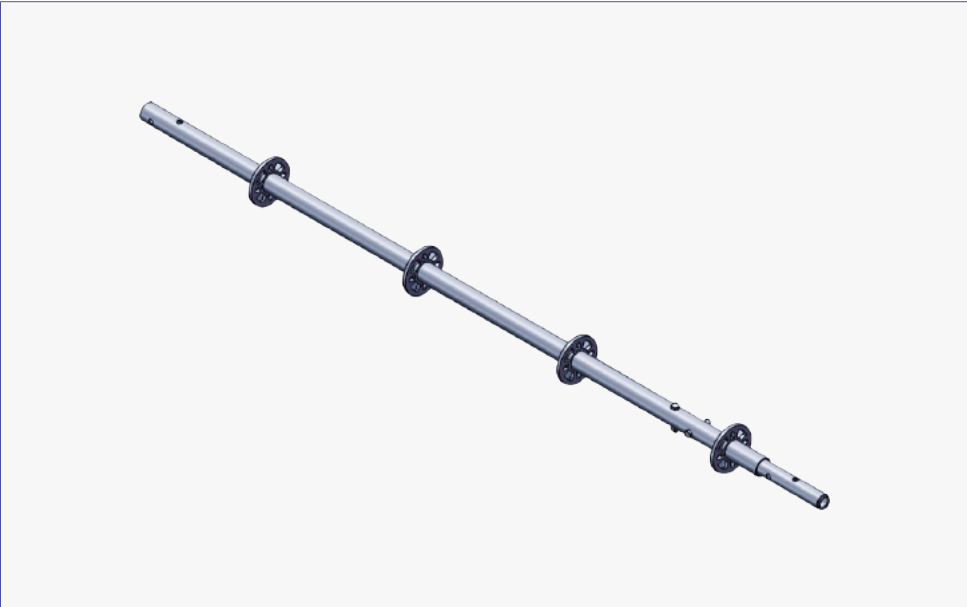
Ringlock Standard(Vertical) has rosettes at 500mm interval, Tube size: OD48.3x3.2mm, Steel Grade:S235 or S355. Surface treatment: Hot dip galvanized.



Item No.	Description	Length	Weight (kgs)		Packaging	
		Meters	Kgs	Lbs	Qty.	Type
RV40	8 Ring Standard 4.0M w/ spigot	4.00	19.18	42.25	100	Rack
RV30	6 Ring Standard 3.0M w/ spigot	3.00	14.56	32.07	100	Rack
RV25	5 Ring Standard 2.5M w/ spigot	2.50	12.26	27.00	100	Rack
RV20	4 Ring Standard 2.0M w/ spigot	2.00	9.82	21.63	100	Rack
RV15	3 Ring Standard 1.5M w/ spigot	1.50	7.51	16.54	100	Rack
RV10	2 Ring Standard 1.0M w/ spigot	1.00	5.21	12.10	100	Rack
RV05	1 Ring Standard 0.5M w/ spigot	0.50	2.90	6.39	200	Rack

Ringlock Standard with Hanging Spigot

Ringlock Standard(Vertical) has rosettes at 500mm interval, Tube size: OD48.3x3.2mm, Steel Grade: S355. Surface treatment: Hot dip galvanized. Specifically for hanging applications.

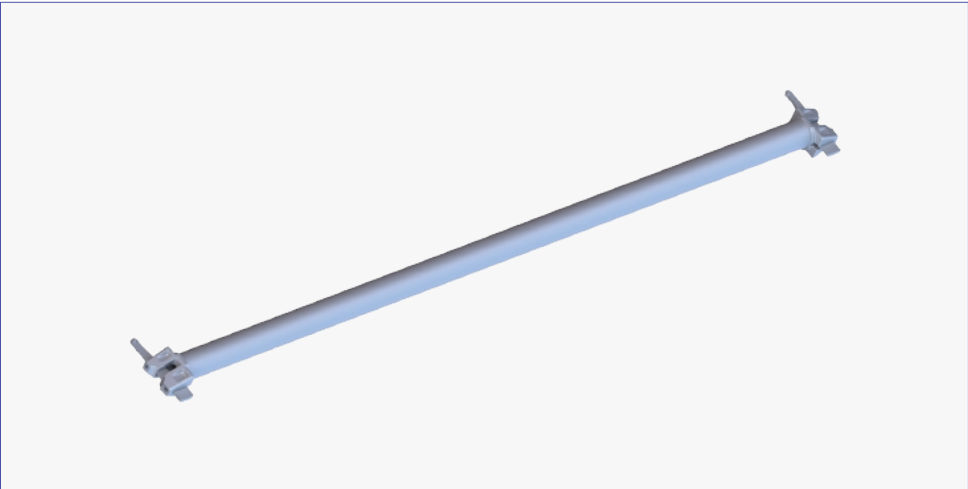


Item No.	Description	Length	Weight (kgs)	Packaging	
		Meters	Kgs	Qty.	Type
RL1680	8 Ring Standard 4.0m w/Hanging spigot	4.0	20.61	100	Rack
RL1585	6 Ring Standard 3.0m w/Hanging spigot	3.0	16.00	100	Rack
RL1681	5 Ring Standard 2.5m w/Hanging spigot	2.5	13.70	100	Rack
RL1682	4 Ring Standard 2.0m w/Hanging spigot	2.0	11.39	100	Rack
RL1683	3 Ring Standard 1.5m w/Hanging spigot	1.5	9.08	100	Rack
RL1684	2 Ring Standard 1.0m w/Hanging spigot	1.0	6.78	200	Rack

Ringlock Ledger

Ledger O-Type

Ringlock Ledger, Tube size: OD48.3x3.2mm, Steel Grade:S235 or S355. Surface treatment: Hot dip galvanized. Ledgers are also used as guard rail.

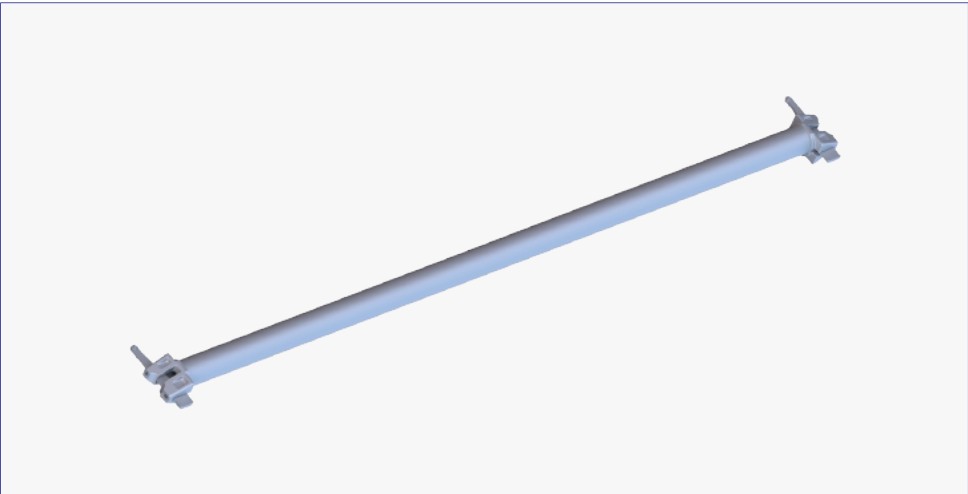


Item No.	Description	Length	Weight (kgs)		Packaging	
		Meters	Kgs	Lbs	Qty.	Type
RH042	0.42M O-Ledger	0.42	2.08	4.58	300	Rack
RH073	0.73M O-Ledger	0.73	3.18	7.00	300	Rack
RH109	1.09M O-Ledger	1.09	4.28	9.43	150	Rack
RH140	1.40M O-Ledger	1.40	5.56	12.25	150	Rack
RH157	1.57M O-Ledger	1.57	6.16	13.57	150	Rack
RH207	2.07M O-Ledger	2.07	7.93	17.47	150	Rack
RH257	2.57M O-Ledger	2.57	9.71	21.39	150	Rack
RH307	3.07M O-Ledger	3.07	11.49	25.31	150	Rack
RH414	4.14M O-Ledger	4.14	15.29	33.68	150	Rack

Ringlock Ledger

Ledger O-Type

Ringlock Ledger, Tube size: OD48.3x3.2mm, Steel Grade: S355. Surface treatment: Hot dip galvanized.



Item No.	Description	Length	Weight (kgs)	Packaging	
		Meters	Kgs	Qty.	Type
RL1712	0.35M O - Ledger	0.35	1.86	450	BASKET RACK
RL1687	0.60M O - Ledger	0.60	2.94	300	RACK
RL1713	0.65M O - Ledger	0.65	3.08	300	RACK
RL1686	0.84M O - Ledger	0.84	3.64	300	RACK
RL1714	0.88M O - Ledger	0.88	3.90	300	RACK
RL1715	1.065M O - Ledger	1.065	4.56	150	RACK
RL1716	1.15M O - Ledger	1.15	4.86	150	RACK
RL1717	1.52M O - Ledger	1.52	6.19	150	RACK
RL1718	1.57M O - Ledger	1.57	6.36	150	RACK
RL1719	1.82M O - Ledger	1.82	7.27	150	RACK
RL1720	2.13M O - Ledger	2.13	8.34	150	RACK
RL1721	2.43M O - Ledger	2.43	9.44	150	RACK
RL1722	3.05M O - Ledger	3.05	11.61	150	RACK

Ringlock Transom

Transom U-Type

Ringlock U Transom, Size:53x48x2.5mm,Steel Grade: S235 or S355. Surface treatment: Hot dip galvanized.

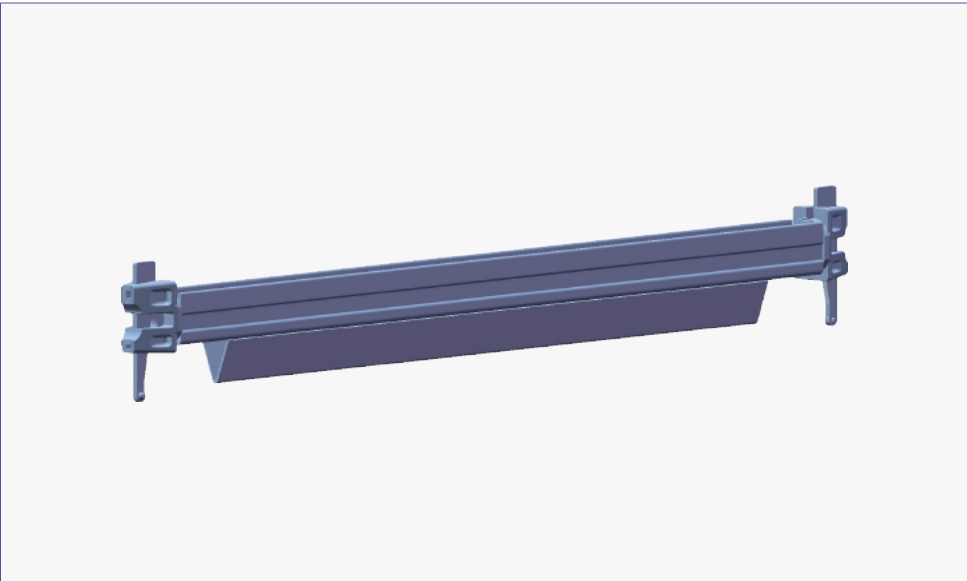


Item No.	Description	Length	Weight (kgs)		Packaging	
		Meters	Kgs	Lbs	Qty.	Type
RHU042	0.42M U-Ledger	0.42	2.10	4.63	300	Rack
RHU045	0.45M U-Ledger	0.45	2.18	4.80	300	Rack
RHU073	0.73M U-Ledger	0.73	3.20	7.05	300	Rack
RHU109	1.09M U-Ledger	1.09	4.50	9.91	150	Rack
RHU140	1.40M U-Ledger	1.40	5.60	12.33	150	Rack
RHU157	1.57M U-Ledger	1.57	6.10	13.44	150	Rack
RHU207	2.07M U-Ledger	2.07	7.90	17.40	150	Rack

Ringlock Reinforced Ledger

Reinforced Ledger U-Type

The Reinforced Ledger is engineered to enable higher service loads to the working platform.
Steel Grade: S235 or S355. Surface treatment: Hot dip galvanized.

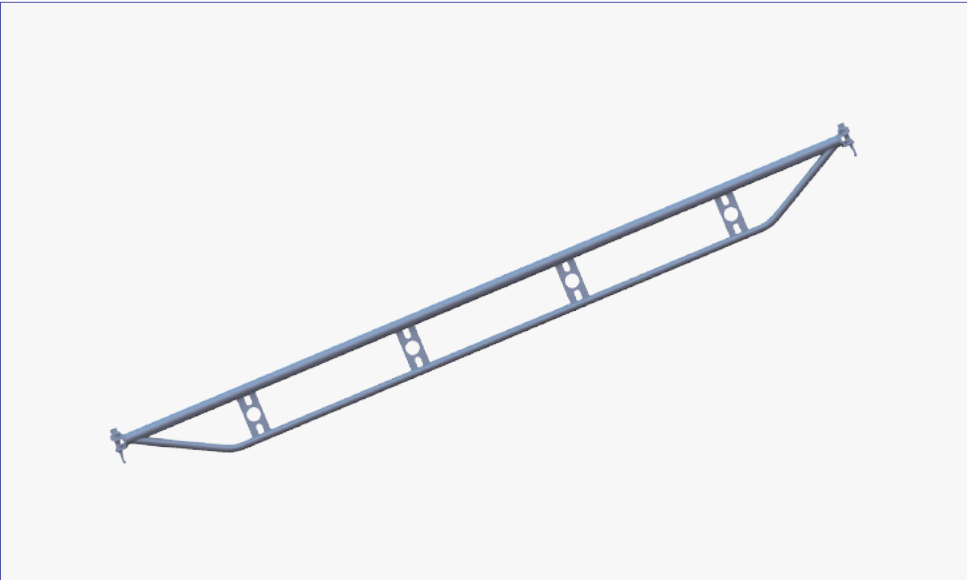


Item No.	Description	Length	Weight (kgs)		Packaging	
			Meters	Kgs	Lbs	Qty. Type
RRH109	1.09M U-Reinforced Ledger	1.09	6.80	14.98	150	Rack
RRH140	1.40M U-Reinforced Ledger	1.40	7.70	16.96	150	Rack
RRH157	1.57M U-Reinforced Ledger	1.57	8.60	18.94	150	Rack
RRH207	2.07M U-Reinforced Ledger	2.07	11.30	24.89	150	Rack
RRH257	2.57M U-Reinforced Ledger	2.57	14.00	30.84	150	Rack
RRH307	3.07M U-Reinforced Ledger	3.07	16.60	36.56	150	Rack

Ringlock Bridging Ledger

Bridging Ledger O-Type

The Bridging Ledger is engineered to enable higher service loads to the working platform. Tube size: OD48.3x3.2mm, Steel Grade:S235 or S355. Surface treatment: Hot dip galvanized.

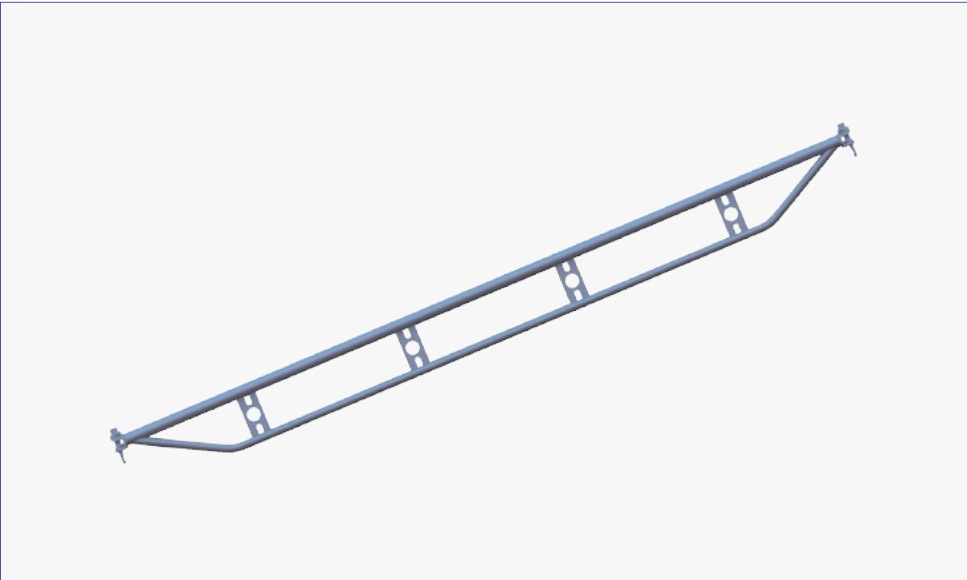


Item No.	Description	Length	Weight (kgs)		Packaging	
		Meters	Kgs	Lbs	Qty.	Type
RBL157	1.57M O-Bridging Ledger	1.57	9.47	20.86	60	Rack
RBL207	2.07M O-Bridging Ledger	2.07	12.29	27.07	60	Rack
RBL257	2.57M O-Bridging Ledger	2.57	15.45	34.03	60	Rack
RBL307	3.07M O-Bridging Ledger	3.07	18.44	40.62	60	Rack

Ringlock Bridging Ledger

Truss Ledger O-Type

The Truss Ledger is engineered to enable higher service loads to the working platform. Tube size: OD48.3x3.2mm, Steel Grade: S355. Surface treatment: Hot dip galvanized.

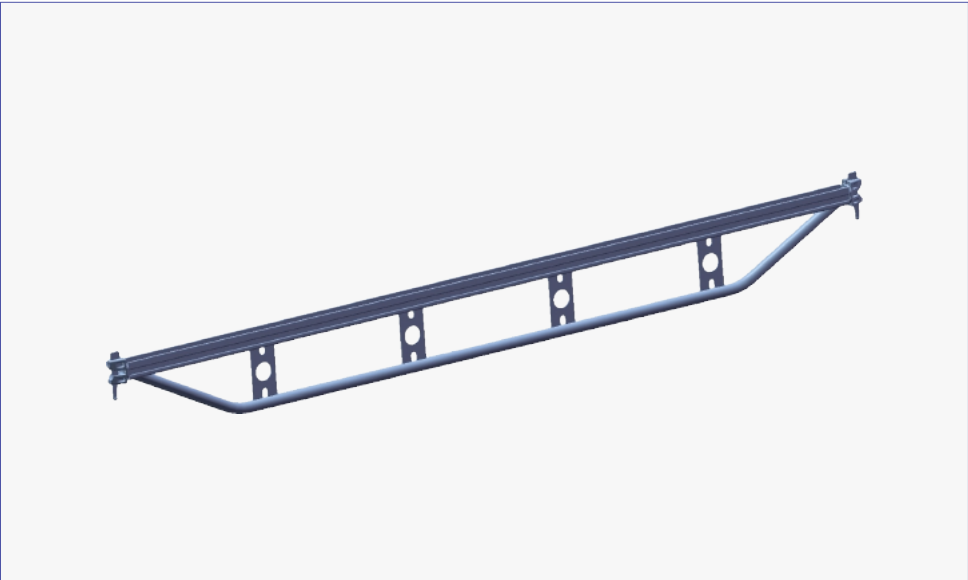


Item No.	Description	Length	Weight (kgs)	Packaging	
		Meters	Kgs	Qty.	Type
RL1723	1.57M O Truss Ledger	1.57	9.74	60	Rack
RL1724	1.82M O Truss Ledger	1.82	11.56	60	Rack
RL1725	2.13M O Truss Ledger	2.13	13.62	60	Rack
RL1726	2.43M O Truss Ledger	2.43	15.36	60	Rack
RL1727	3.05M O Truss Ledger	3.05	19.53	60	Rack

Ringlock Bridging Ledger

Bridging Ledger U-Type

The Bridging Ledger is engineering to enable higher service loads to the working platform.
Steel Grade:S235 or S355. Surface treatment: Hot dip galvanized.

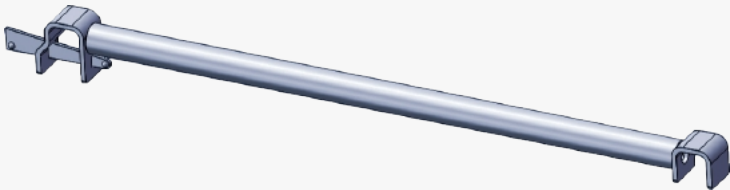


Item No.	Description	Length	Weight (kgs)		Packaging	
		Meters	Kgs	Lbs	Qty.	Type
RBLU157	1.57M U-Bridging Ledger	1.57	9.91	21.83	60	Rack
RBLU207	2.07M U-Bridging Ledger	2.07	13.10	28.85	60	Rack
RBLU257	2.57M U-Bridging Ledger	2.57	15.89	35.00	60	Rack
RBLU307	3.07M U-Bridging Ledger	3.07	19.07	42.00	60	Rack

Ringlock MID Transom

MID Transom O-Type

The Mid Transom is designed to create a transom at the plank level anywhere inside of a bay by straddling the outer Ledgers / Transoms of a bay. Tube size: OD48.3x3.2mm, Steel Grade: S235. Surface treatment: Hot dip galvanized.

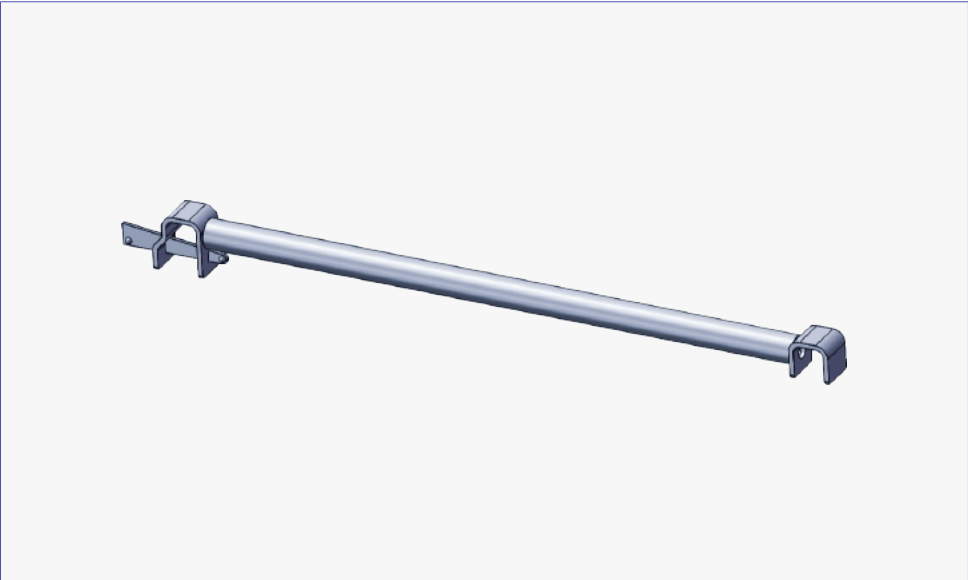


Item No.	Description	Length	Weight (kgs)		Packaging	
		Meters	Kgs	Lbs	Qty.	Type
RMT073	0.73M Mid Transom	0.73	3.91	8.61	320	Rack
RMT109	1.09M Mid Transom	1.09	5.14	11.32	160	Rack
RMT140	1.40M Mid Transom	1.40	6.22	13.70	160	Rack
RMT157	1.57M Mid Transom	1.57	6.82	15.02	160	Rack
RMT207	2.07M Mid Transom	2.07	8.49	18.70	160	Rack
RMT257	2.57M Mid Transom	2.50	10.15	22.36	160	Rack
RMT307	3.07M Mid Transom	3.07	12.12	26.70	160	Rack

Ringlock MID Transom

MID Transom O-Type

The Mid Transom is designed to create a transom at the plank level anywhere inside of a bay by straddling the outer Ledgers / Transoms of a bay. Tube size: OD48.3x3.2mm, Steel Grade: S235. Surface treatment: Hot dip galvanized.

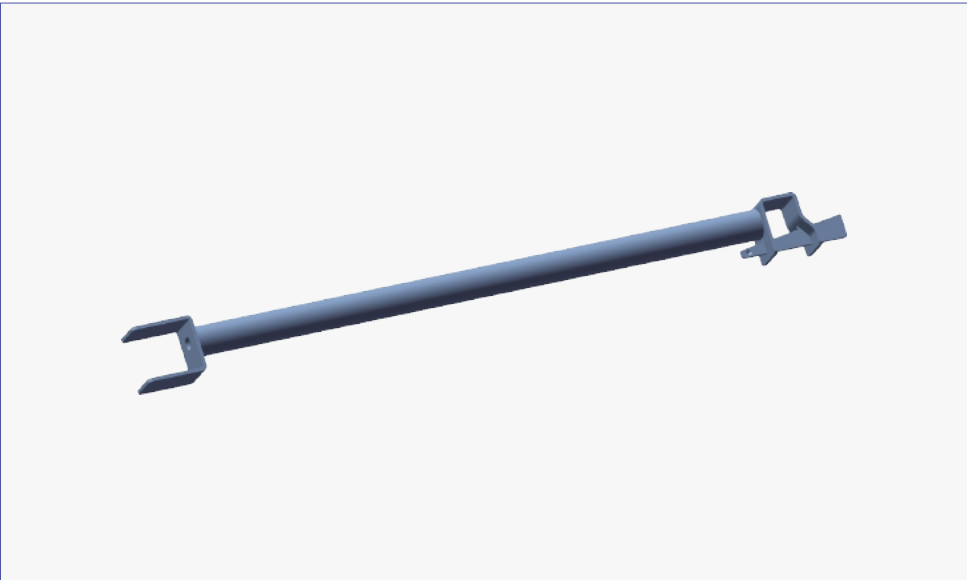


Item No.	Description	Length	Weight (kgs)	Packaging	
		Meters	Kgs	Qty.	Type
RL1688	1.065M Mid Transom	1.065	5.09	100	Rack
RL1689	1.15M Mid Transom	1.15	5.45	100	Rack
RL1728	1.57M Mid Transom	1.57	6.82	100	Rack
RL1690	1.82M Mid Transom	1.82	7.80	100	Rack
RL1691	2.13M Mid Transom	2.13	9.08	100	Rack
RL1692	2.43M Mid Transom	2.43	10.10	100	Rack
RL1693	3.05M Mid Transom	3.05	12.45	100	Rack

Ringlock Ledger to Plank Transom

Ledger to Plank Transom O-Type

The Ledger to Plank Transom is used where ladder access opening is required on one side of the access platform, or infill a gap in the platform. Tube size: OD48.3x3.2mm, Steel Grade: S235 or S355. Surface treatment: Hot dip galvanized.

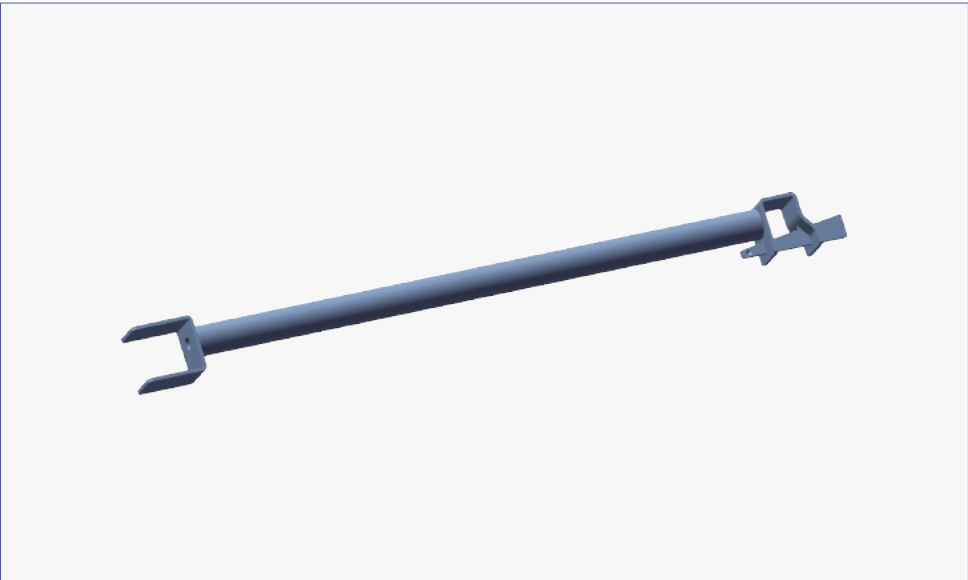


Item No.	Description	Length	Weight (kgs)		Packaging	
		Meters	Kgs	Lbs	Qty.	Type
RLPT24	1 board Ledger to Plank Transom	0.32	3.40	7.49	200	Rack+Insert
RLPT48	2 board Ledger to Plank Transom	0.64	4.35	9.58	200	Rack+Insert
RLPT72	3 board Ledger to Plank Transom	0.96	5.63	12.40	200	Rack+Insert

Ringlock Ledger to Plank Transom

Ledger to Plank Transom O-Type

The Ledger to Plank Transom is used where ladder access opening is required on one side of the access platform, or infill a gap in the platform. Tube size: OD48.3x3.2mm, Steel Grade: S235. Surface treatment: Hot dip galvanized.

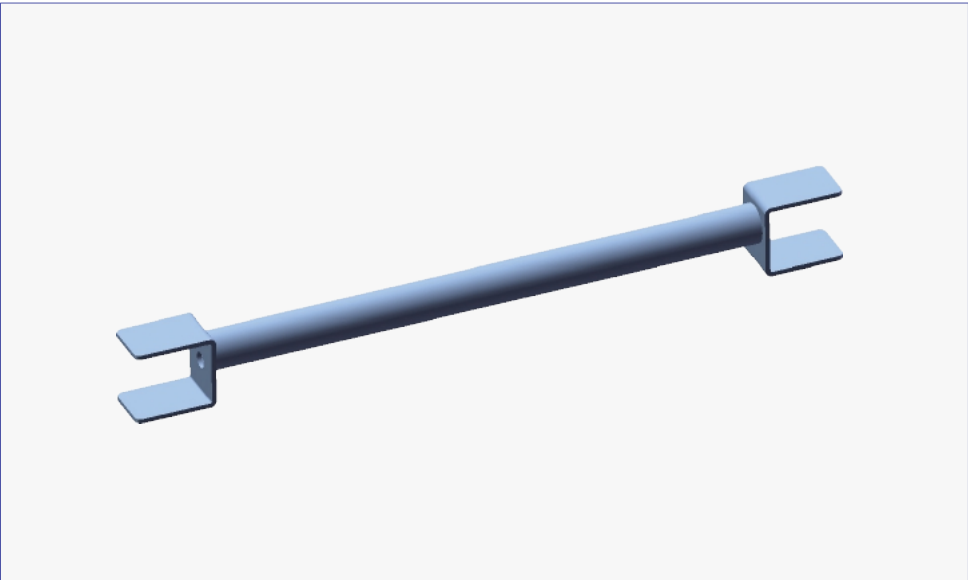


Item No.	Description	Length	Weight (kgs)	Packaging	
		Meters	Kgs	Qty.	Type
RL1694	0.24M Ledger to Plank Transom	0.24	3.38	300	BASKET RACK
RL1695	0.48M Ledger to Plank Transom	0.48	4.23	200	BASKET RACK
RL1696	0.72M Ledger to Plank Transom	0.72	5.07	100	BASKET RACK

Ringlock Plank to Plank Transom

Plank to Plank Transom O-Type

The Plank to Plank Transom is used where ladder access opening is required on one side of the access platform, or infill a gap in the platform. Tube size: OD48.3x3.2mm, Steel Grade: S235 or S355. Surface treatment: Hot dip galvanized.

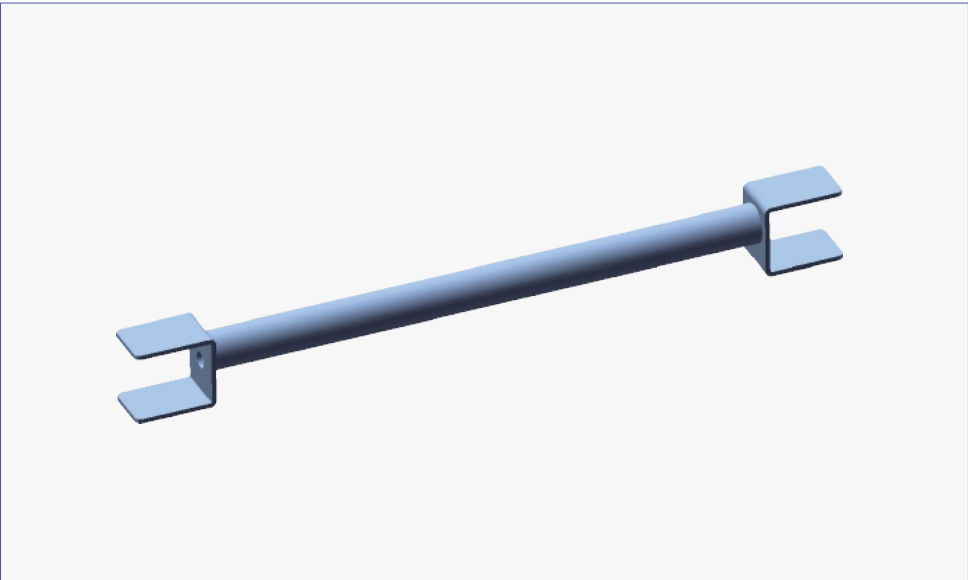


Item No.	Description	Length	Weight (kgs)		Packaging	
		Meters	Kgs	Lbs	Qty.	Type
RPPT32	1 board Plank to Plank Transom	0.32	4.50	9.91	170	Rack+Insert
RPPT07	2 board Plank to Plank Transom	0.70	5.60	12.33	170	Rack+Insert
RPPT109	3 board Plank to Plank Transom	1.09	6.80	14.98	170	Rack+Insert

Ringlock Plank to Plank Transom

Plank to Plank Transom O-Type

The Plank to Plank Transom is used where ladder access opening is required on one side of the access platform, or infill a gap in the platform. Tube size: OD48.3x3.2mm, Steel Grade: S235. Surface treatment: Hot dip galvanized.

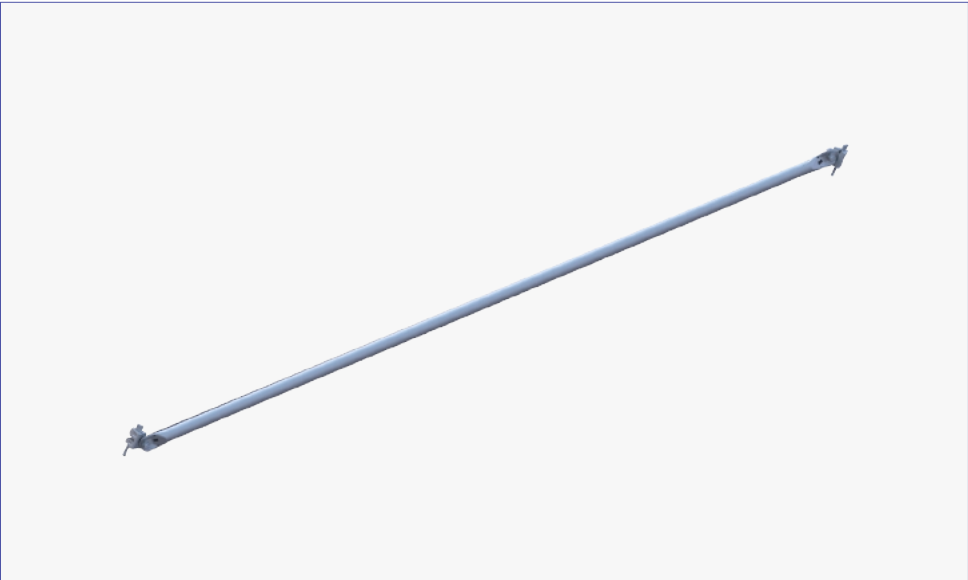


Item No.	Description	Length	Weight (kgs)	Packaging	
		Meters	Kgs	Qty.	Type
RL1697	0.24M Plank to Plank Transom	0.24	3.67	300	Rack+Insert
RL1698	0.48M Plank to Plank Transom	0.48	4.55	200	Rack+Insert
RL1699	0.72M Plank to Plank Transom	0.72	5.47	100	Rack+Insert

Ringlock Diagonal Braces

Bay Brace 2.0m Lift

The Diagonal Brace is used for the lateral bracing of Ringlock scaffolds. Tube size: OD48.3x2.5mm, Steel Grade: S235 or S355. Surface treatment: Hot dip galvanized.

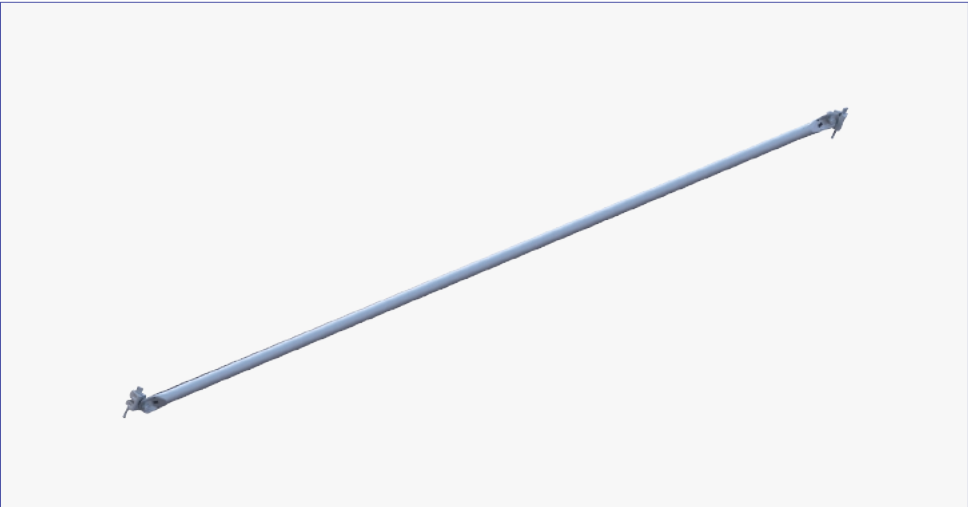


Item No.	Description	Length	Weight (kgs)		Packaging	
		Meters	Kgs	Lbs	Qty.	Type
RDB073	0.73M x 2M Diagonal Brace	0.73	7.87	17.33	150	Rack
RDB109	1.09M x 2M Diagonal Brace	1.09	8.18	18.02	150	Rack
RDB129	1.29M x 2M Diagonal Brace	1.29	8.50	18.72	150	Rack
RDB140	1.40M x 2M Diagonal Brace	1.40	8.66	19.07	150	Rack
RDB157	1.57M x 2M Diagonal Brace	1.57	8.94	19.69	150	Rack
RDB207	2.07M x 2M Diagonal Brace	2.07	9.86	21.72	150	Rack
RDB257	2.57M x 2M Diagonal Brace	2.57	10.91	24.03	150	Rack
RDB307	3.07M x 2M Diagonal Brace	3.07	12.07	26.59	150	Rack
RDB414	4.14M x 2M Diagonal Brace	4.14	14.73	32.44	150	Rack

Ringlock Diagonal Braces

Bay Brace 2.0m Lift

The Bay Brace is used for the lateral bracing of ringlock scaffolds. Tube size:OD48.3x2.5mm, Steel Grade: S235. Surface treatment: Hot dip galvanized.

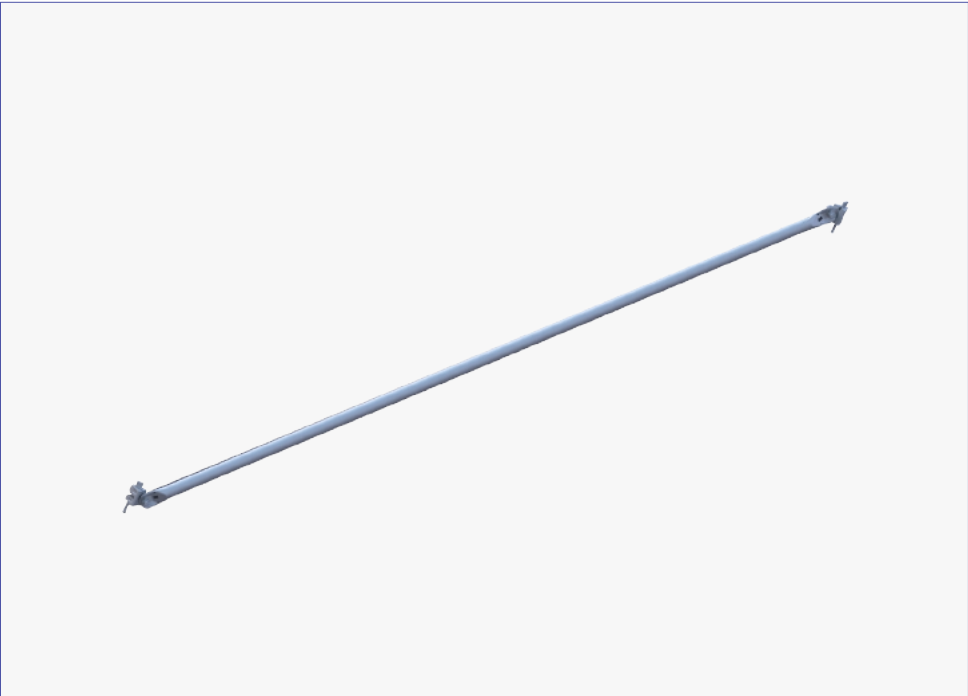


Item No.	Description	Length	Weight (kgs)	Packaging	
		Meters	Kgs	Qty.	Type
RL1700	0.60M x 2M Bay Brace	0.60	7.78	150	Rack
RL1701	0.84M x 2M Bay Brace	0.84	7.97	150	Rack
RL1729	0.88M x 2M Bay Brace	0.88	8.00	150	Rack
RL1730	1.065M x 2M Bay Brace	1.065	8.21	150	Rack
RL1731	1.15M x 2M Bay Brace	1.15	8.31	150	Rack
RL1732	1.52M x 2M Bay Brace	1.52	8.86	150	Rack
RL1733	1.57M x 2M Bay Brace	1.57	8.94	150	Rack
RL1734	1.82M x 2M Bay Brace	1.82	9.39	150	Rack
RL1735	2.13M x 2M Bay Brace	2.13	9.98	150	Rack
RL1736	2.43M x 2M Bay Brace	2.43	10.63	150	Rack
RL1737	3.05M x 2M Bay Brace	3.05	12.02	150	Rack

Ringlock Diagonal Braces

Bay Brace 1.5m Lift

The Bay Brace is used for the lateral bracing of ringlock scaffolds. Tube size:OD48.3x2.5mm, Steel Grade: S235. Surface treatment: Hot dip galvanized.

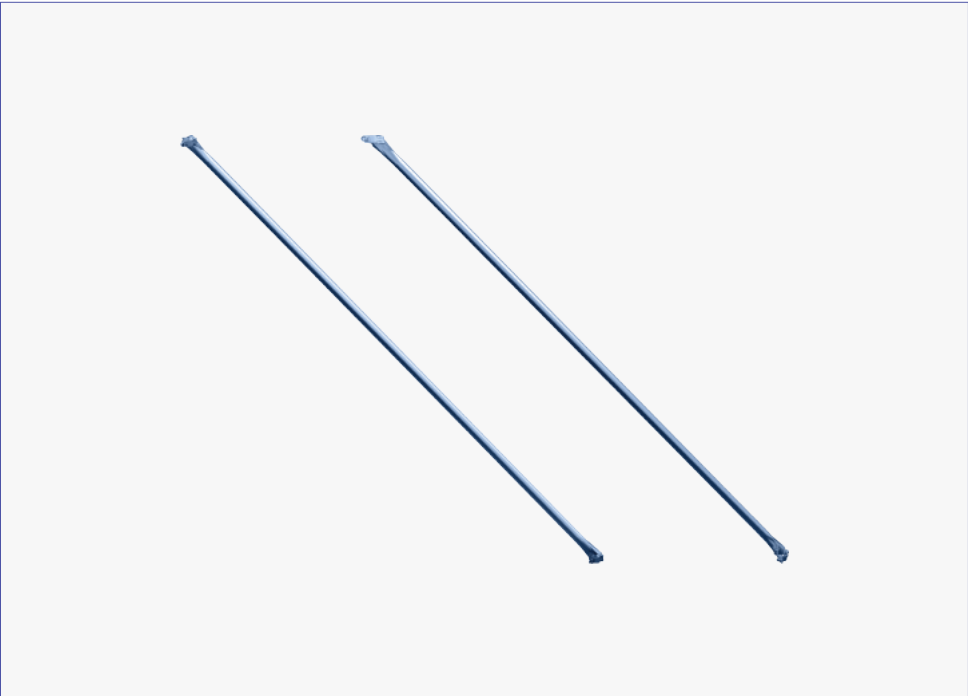


Item No.	Description	Length	Weight (kgs)	Packaging	
		Meters	Kgs	Qty.	Type
RL1704	1.52M x 1.5M Bay Brace	1.52	7.03	150	Rack

Ringlock Diagonal Braces

Swivel Clamp Brace

The Bay Brace is used for the lateral bracing of ringlock scaffolds, Tube size: OD 48.3x2.5mm, Steel Grade: S235, Surface treatment: Hot Dip Galvanized

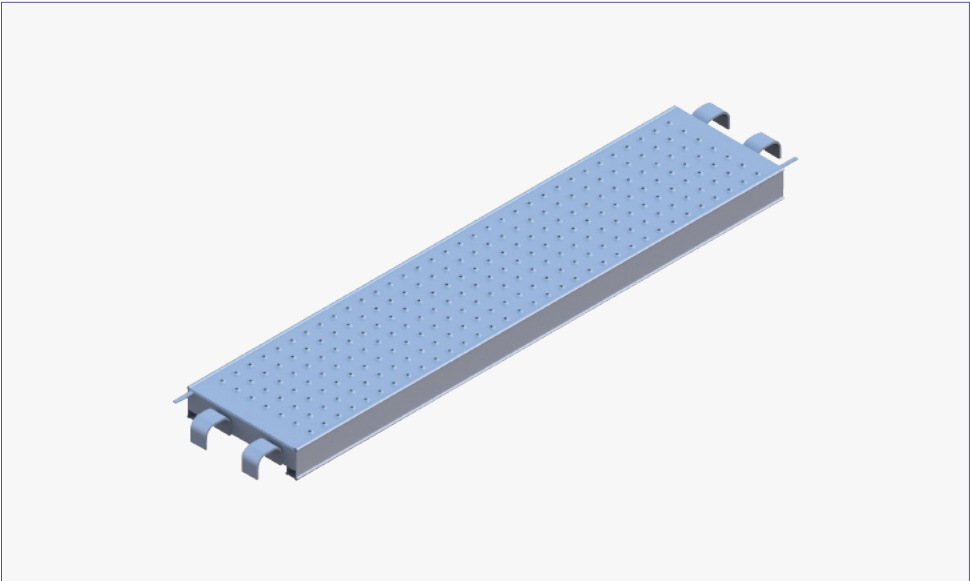


Item No.	Description	Length	Weight (kgs)	Packaging	
		Meters	Kgs	Qty.	Type
RL1702	1.52M x 2M Swivel Clamp Brace	1.52	9.43	150	Rack
RL1705	2.13M x 2M Swivel Clamp Brace	2.13	10.61	150	Rack
RL1703	2.43M x 2M Swivel Clamp Brace	2.43	11.28	150	Rack
RL1706	3.05M x 2M Swivel Clamp Brace	3.05	12.70	150	Rack

Work Platforms

Steel Plank O-Type 320mm

Ringlock Steel Plank, Width:320mm, Height:76mm, Thickness:1.5mm. Steel Grade: S235, Surface treatment: Hot dip galvanized or Pre-galvanized.

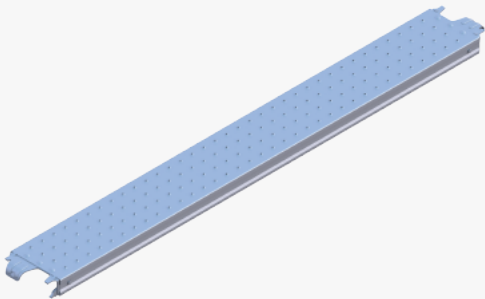


Item No.	Description	Length	Weight (kgs)		Packaging	
		Meters	Kgs	Lbs	Qty.	Type
RDEP073	0.73M O-Steel Plank	0.73	6.82	15.02	194	Rack
RDEP109	1.09M O-Steel Plank	1.09	9.43	20.77	194	Rack
RDEP140	1.40M O-Steel Plank	1.40	11.46	25.24	194	Rack
RDEP157	1.57M O-Steel Plank	1.57	12.58	27.71	97	Rack
RDEP207	2.07M O-Steel Plank	2.07	16.11	35.48	97	Rack
RDEP257	2.57M O-Steel Plank	2.57	19.63	43.24	97	Rack
RDEP307	3.07M O-Steel Plank	3.07	22.92	50.48	97	Rack

Work Platforms

Steel Plank, Width: 0.238m

The steel plank is used to form the working platform, width: 240mm, height:70mm, thickness: 1.5mm, Steel Grade: S355.

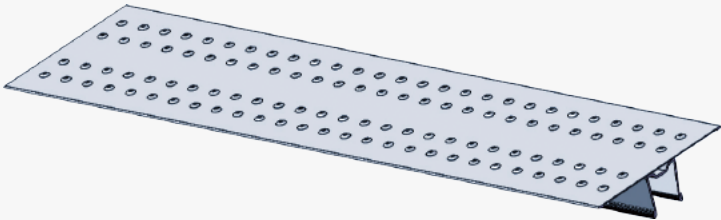


Item No.	Description	Length	Weight (kgs)	Packaging	
		Meters	Kgs	Qty.	Type
WP0565	0.60M x 0.238M Steel Plank	0.60	4.94	120	RACK
WP0566	0.65M x 0.238M Steel Plank	0.65	5.15	120	RACK
WP0567	0.84M x 0.238M Steel Plank	0.84	6.16	120	RACK
WP0568	0.88M x 0.238M Steel Plank	0.88	6.37	120	RACK
WP0569	1.065M x 0.238M Steel Plank	1.065	7.35	60	RACK
WP0570	1.15M x 0.238M Steel Plank	1.15	7.80	60	RACK
WP0571	1.52M x 0.238M Steel Plank	1.52	9.78	60	RACK
WP0572	1.57M x 0.238M Steel Plank	1.57	10.04	60	RACK
WP0573	1.82M x 0.238M Steel Plank	1.82	11.40	60	RACK
WP0574	2.13M x 0.238M Steel Plank	2.13	13.00	60	RACK
WP0575	2.43M x 0.238M Steel Plank	2.43	14.53	60	RACK
WP0576	3.05M x 0.238M Steel Plank	3.05	17.87	60	RACK

Work Platforms

INFILL PLANK

The Infill Plank is designed to fill any unwanted gaps between planks or bays. Width: 0.19m, Thickness: 1.7mm, Pre-galvanized.

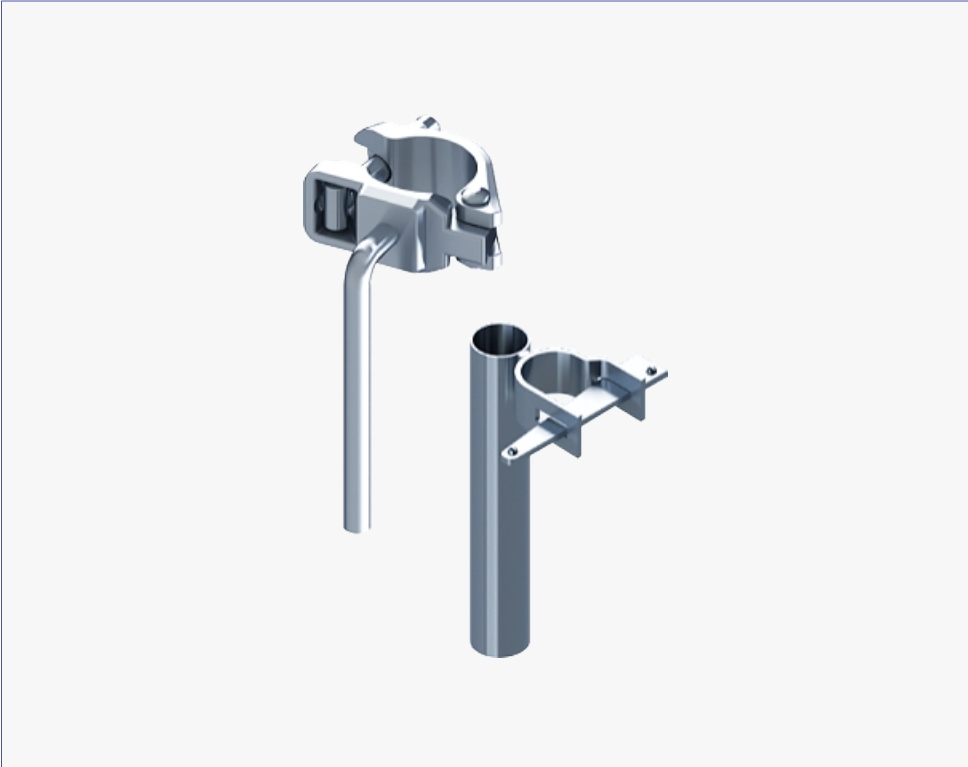


Item No.	Description	Length	Weight (kgs)	Packaging	
		Meters	Kgs	Qty.	Type
WP0577	0.60M x 0.19M Infill Plank	0.60	2.23	120	RACK
WP0578	0.65M x 0.19M Infill Plank	0.65	2.42	120	RACK
WP0579	0.84M x 0.19M Infill Plank	0.84	3.29	60	RACK
WP0580	0.88M x 0.19M Infill Plank	0.88	3.45	60	RACK
WP0581	1.065M x 0.19M Infill Plank	1.065	4.31	60	RACK
WP0582	1.15M x 0.19M Infill Plank	1.15	4.82	60	RACK
WP0583	1.52M x 0.19M Infill Plank	1.52	6.37	60	RACK
WP0584	1.57M x 0.19M Infill Plank	1.57	6.59	60	RACK
WP0585	1.82M x 0.19M Infill Plank	1.82	7.89	60	RACK
WP0586	2.13M x 0.19M Infill Plank	2.13	9.19	60	RACK
WP0587	2.43M x 0.19M Infill Plank	2.43	10.43	60	RACK
WP0588	3.05M x 0.19M Infill Plank	3.05	13.29	60	RACK

Work Platforms

Toeboard Retaining Clamp

The Toe Board Retaining Clamps are used to secure the Toeboard from uplift in adverse weather conditions.

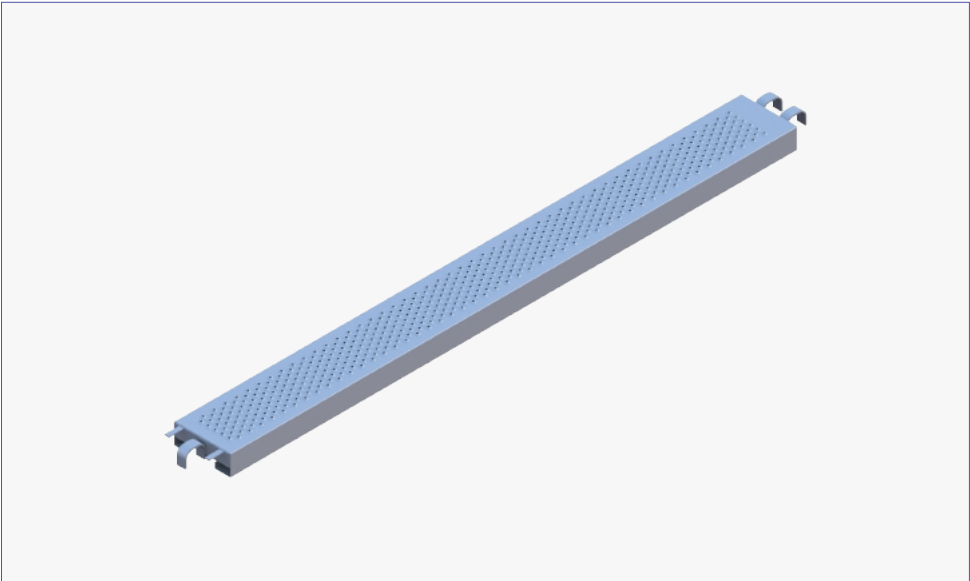


Item No.	Description	Weight (kgs)	Packaging	
		Kgs	Qty.	Type
RL1746	Toe Board Retaining Clamp	0.74	300	BASKET RACK
RL1745	Toe Board Clamp (Wedge)	1.57	300	BASKET RACK

Work Platforms

Steel Plank O-Type 190mm

Ringlock Steel Plank, Width:190mm, Height:76mm, Thickness:1.5mm. Steel Grade: S235, Surface treatment: Hot dip galvanized or Pre-galvanized.

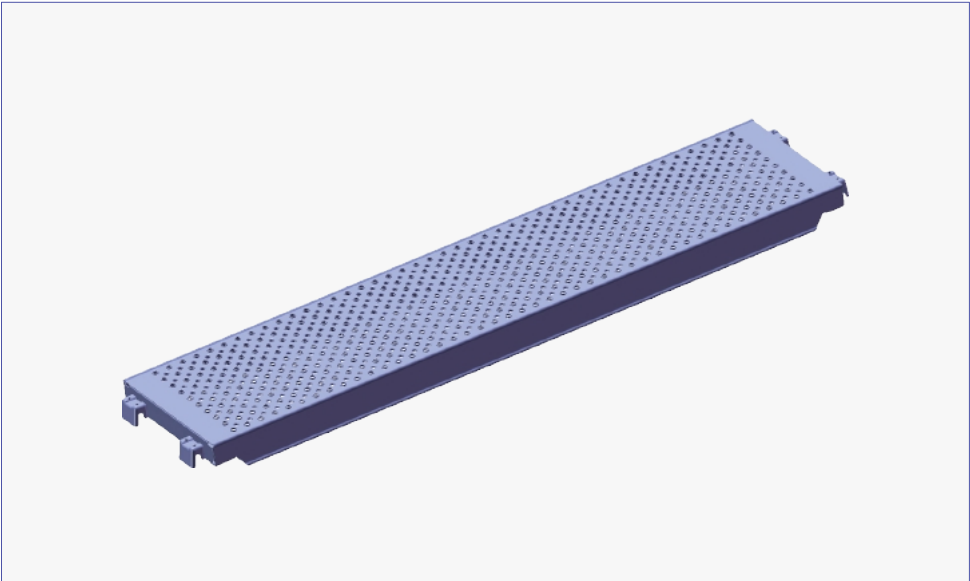


Item No.	Description	Length	Weight (kgs)		Packaging	
		Meters	Kgs	Lbs	Qty.	Type
RDEPS073	0.73M O-Steel Plank	0.73	4.83	10.64	300	Rack
RDEPS109	1.09M O-Steel Plank	1.09	7.53	16.59	300	Rack
RDEPS140	1.40M O-Steel Plank	1.40	8.96	19.74	300	Rack
RDEPS157	1.57M O-Steel Plank	1.57	9.80	21.59	150	Rack
RDEPS207	2.07M O-Steel Plank	2.07	12.50	27.53	150	Rack
RDEPS257	2.57M O-Steel Plank	2.57	14.80	32.60	150	Rack
RDEPS307	3.07M O-Steel Plank	3.07	17.10	37.67	150	Rack

Work Platforms

Steel Plank U-Type 320mm

Ringlock Steel Plank, Width:320mm, Height:76mm, Thickness:1.5mm. Steel Grade: S235, Surface treatment: Hot dip galvanized or Pre-galvanized.

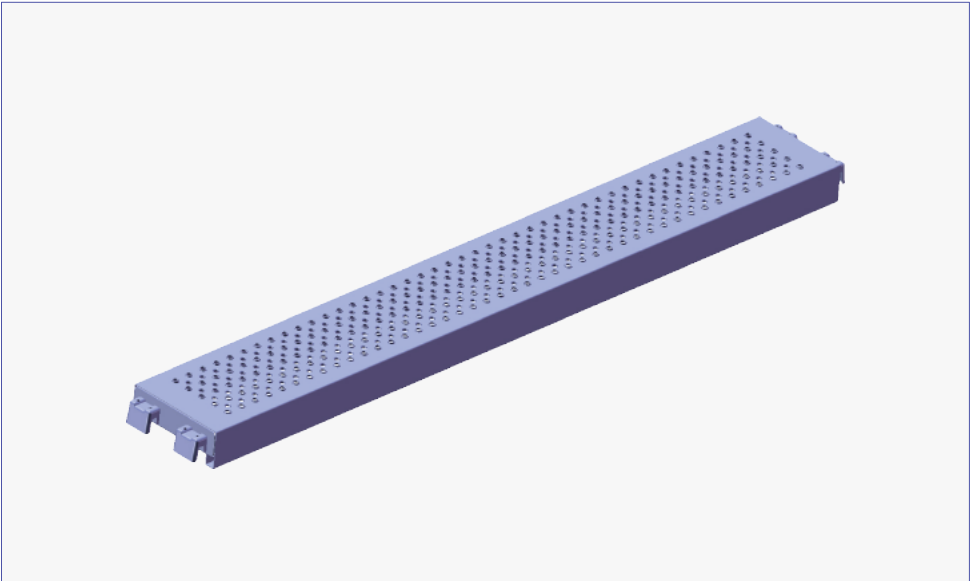


Item No.	Description	Length	Weight (kgs)		Packaging	
		Meters	Kgs	Lbs	Qty.	Type
RWP073	0.73M U-Steel Plank	0.73	5.76	12.69	194	Rack
RWP109	1.09M U-Steel Plank	1.09	8.37	18.44	194	Rack
RWP140	1.40M U-Steel Plank	1.40	10.41	22.93	194	Rack
RWP157	1.57M U-Steel Plank	1.57	11.52	25.37	97	Rack
RWP207	2.07M U-Steel Plank	2.07	15.05	33.15	97	Rack
RWP257	2.57M U-Steel Plank	2.57	18.57	40.90	97	Rack
RWP307	3.07M U-Steel Plank	3.07	21.86	48.15	97	Rack

Work Platforms

Steel Plank U-Type 190mm

Ringlock Steel Plank, Width:190mm, Height:76mm, Thickness:1.5mm. Steel Grade: S235, Surface treatment: Hot dip galvanized or Pre-galvanized.



Item No.	Description	Length	Weight (kgs)		Packaging	
		Meters	Kgs	Lbs	Qty.	Type
RWPS073	0.73M U-Steel Plank	0.73	4.47	9.85	300	Rack
RWPS109	1.09M U-Steel Plank	1.09	6.38	14.05	300	Rack
RWPS140	1.40M U-Steel Plank	1.40	8.02	17.67	300	Rack
RWPS157	1.57M U-Steel Plank	1.57	8.92	19.65	150	Rack
RWPS207	2.07M U-Steel Plank	2.07	11.57	25.48	150	Rack
RWPS257	2.57M U-Steel Plank	2.57	14.22	31.32	150	Rack
RWPS307	3.07M U-Steel Plank	3.07	16.87	37.16	150	Rack

Aluminum Plywood Access Deck

Aluminum Plywood Access Decks 2.0m Lift O-Type

Aluminum Plywood Access Decks is a complete stair unit with built-in landings.

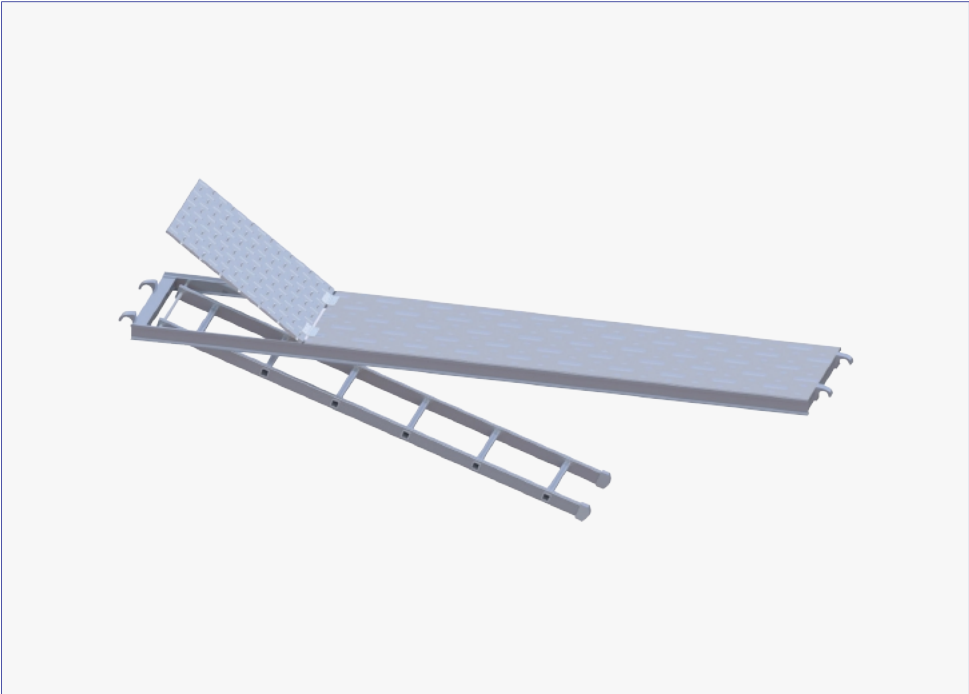


Item No.	Description	Length	Weight (kgs)		Packaging	
		Meters	Kgs	Lbs	Qty.	Type
RPAD109	Aluminum Plywood Access Deck	1.09x0.64	15.70	34.58	50	Rack
RPAD157	Aluminum Plywood Access Deck	1.57x0.64	17.40	38.33	50	Rack
RPAD207	Aluminum Plywood Access Deck	2.07x0.64	21.20	46.70	50	Rack
RPAD257	Aluminum Plywood Access Deck	2.57x0.64	26.20	57.71	50	Rack
RPAD307	Aluminum Plywood Access Deck	3.07x0.64	30.20	66.52	50	Rack

Aluminum Access Deck

Aluminum Access Decks 2.0m Lift O-Type

Aluminum Access Decks is a complete stair unit with built-in landings.

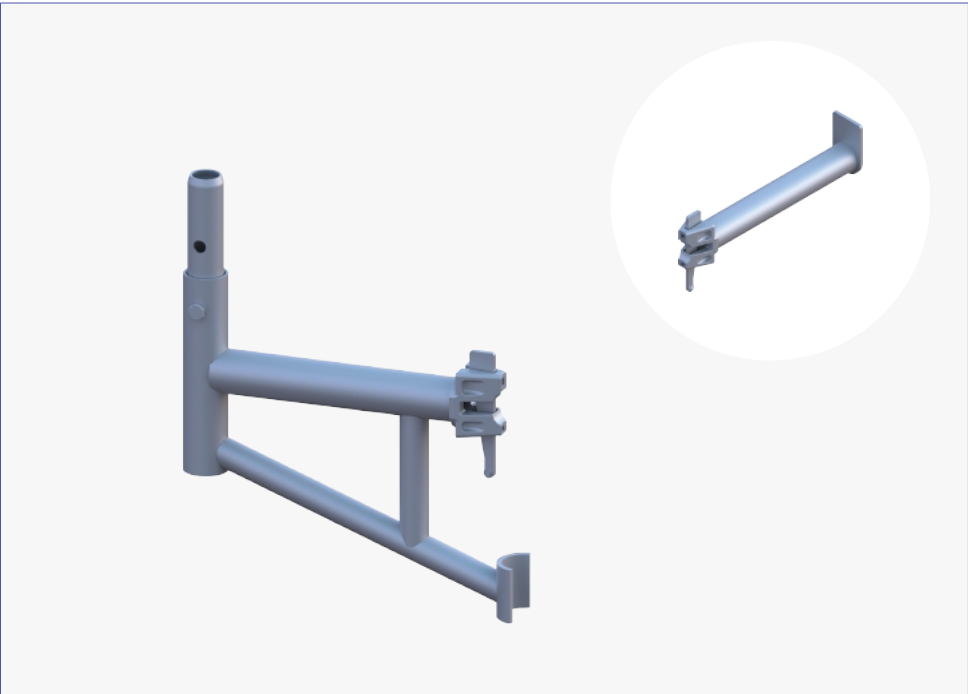


Item No.	Description	Length	Weight (kgs)		Packaging	
		Meters	Kgs	Lbs	Qty.	Type
RAD109	Aluminum Access Deck	1.09x0.64	20.30	44.71	50	Rack
RAD157	Aluminum Access Deck	1.57x0.64	22.80	50.22	50	Rack
RAD207	Aluminum Access Deck	2.07x0.64	24.50	53.96	50	Rack
RAD257	Aluminum Access Deck	2.57x0.64	28.10	61.89	50	Rack
RAD307	Aluminum Access Deck	3.07x0.64	32.20	70.93	50	Rack

Ringlock Side Bracket

Side/Hop-up Bracket O-Type

The side/hop-up bracket is used to extend the working platform closer to the building structure. Steel Grade: S235 or S355. Surface treatment: Hot dip galvanized.

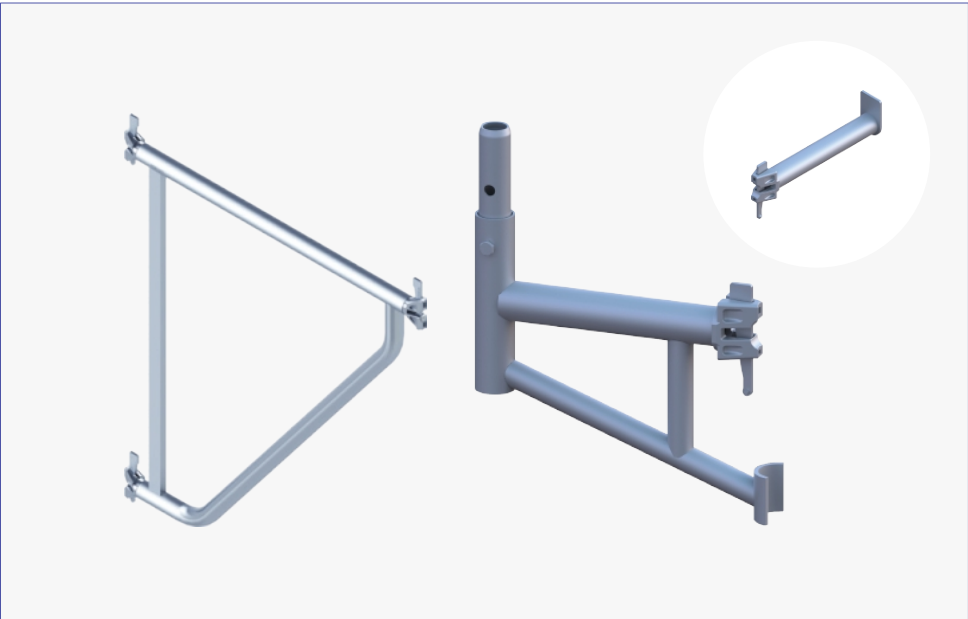


Item No.	Description	Length	Weight (kgs)		Packaging	
		Meters	Kgs	Lbs	Qty.	Type
RSB1	1 board O-Side Bracket	0.42	4.92	10.84	110	Rack
RSB2	2 board O-Side Bracket	0.73	6.70	14.76	66	Rack
RSB3	3 board O-Side Bracket	1.09	9.00	19.82	50	Rack

Ringlock Side Bracket

Side/Hop-up Bracket O-Type

The side/hop-up bracket is used to extend the working platform closer to the building structure. Steel Grade: S235. Surface treatment: Hot dip galvanized.



Item No.	Description	Length	Weight (kgs)	Packaging	
		Meters	Kgs	Qty.	Type
RL1710	0.31M Side Bracket, No Spigot	0.31	1.83	300	BASKET RACK
RL1711	0.60M Side Bracket, No Spigot	0.60	2.86	150	BASKET RACK
RL1708	0.31M Side Bracket	0.31	3.84	100	RACK
RL1709	0.60M Side Bracket	0.60	5.57	60	RACK
RL1523	0.65M Side Bracket	0.65	5.95	60	RACK
RL1707	0.84M Side Bracket	0.84	7.00	60	RACK
RL1738	0.88M Side Bracket	0.88	7.33	60	RACK
RL1739	1.065M Side Bracket-3 Wedge Head	1.065	11.90	25	RACK
RL1740	1.15M Side Bracket-3 Wedge Head	1.15	12.50	25	RACK

Ringlock Side Bracket

Side/Hop-up Bracket U-Type

The side/hop-up bracket is used to extend the working platform closer to the building structure. Steel Grade: S235 or S355. Surface treatment: Hot dip galvanized.

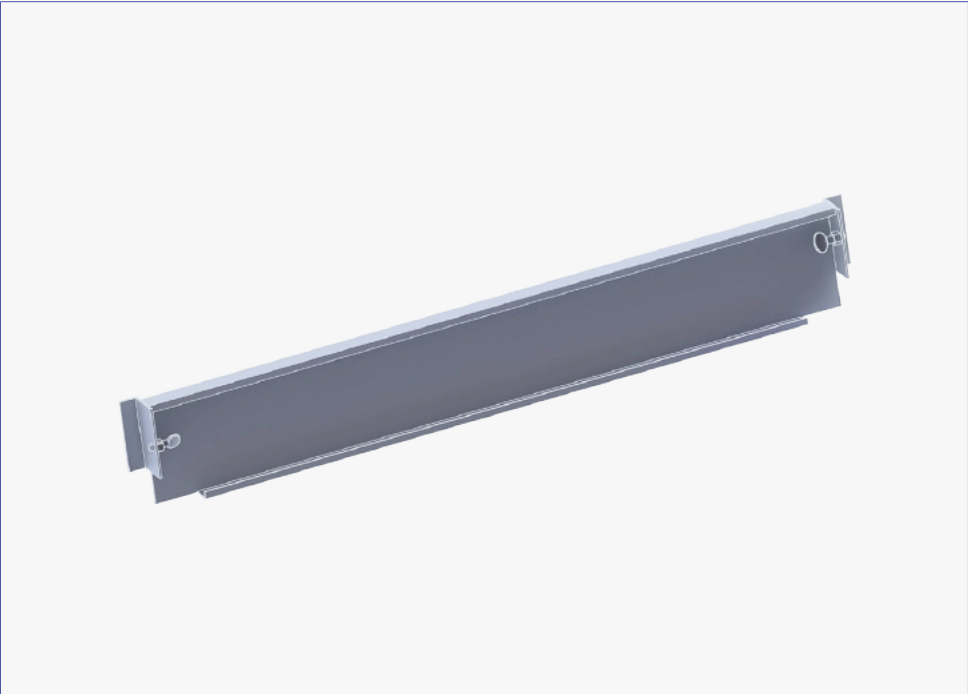


Item No.	Description	Length	Weight (kgs)		Packaging	
		Meters	Kgs	Lbs	Qty.	Type
RSBU1	U-Side Bracket 1 board	0.42	7.20	15.86	110	Rack
RSBU2	U-Side Bracket 2 board	0.73	9.10	20.04	66	Rack
RSBU3	U-Side Bracket 3 board	1.09	11.20	24.67	50	Rack

Steel Toe Board

Steel Toe Board-Bolted Type

Steel Toe Board, Height: 150mm, S235 Steel sheet, Surface treatment: Pre-galvanized.

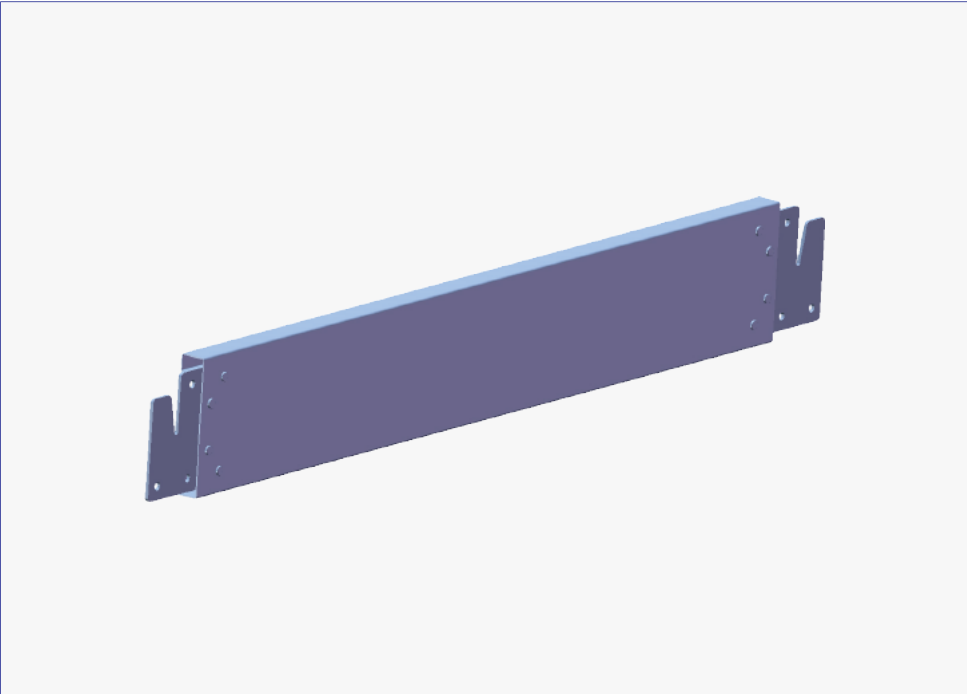


Item No.	Description	Length	Weight (kgs)		Packaging	
		Meters	Kgs	Lbs	Qty.	Type
RSTB073	0.73M Toe Board	0.73	2.15	4.74	280	Rack
RSTB109	1.09M Toe Board	1.09	3.09	6.81	140	Rack
RSTB129	1.40M Toe Board	1.40	3.89	8.57	140	Rack
RSTB157	1.57M Toe Board	1.57	4.34	9.56	140	Rack
RSTB207	2.07M Toe Board	2.07	5.64	12.42	140	Rack
RSTB257	2.57M Toe Board	2.57	6.94	15.29	140	Rack
RSTB307	3.07M Toe Board	3.07	8.24	18.15	140	Rack

Steel Toe Board

Steel Toe Board-Hook Type

Ringlock Steel Toe Board, Height:150mm, Steel Grade: S235. Surface treatment:Pre-galvanized.

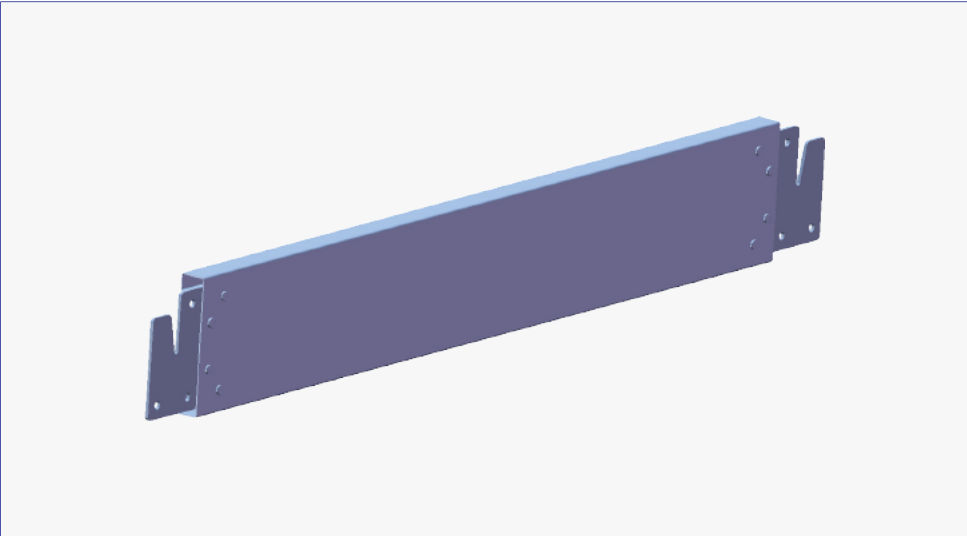


Item No.	Description	Length	Weight (kgs)		Packaging	
		Meters	Kgs	Lbs	Qty.	Type
RSTBH073	0.73M Toe Board	0.73	2.66	5.86	280	Rack
RSTBH109	1.09M Toe Board	1.09	3.69	8.13	140	Rack
RSTBH129	1.29M Toe Board	1.40	4.58	10.09	140	Rack
RSTBH157	1.57M Toe Board	1.57	5.05	11.12	140	Rack
RSTBH207	2.07M Toe Board	2.07	6.48	14.27	140	Rack
RSTBH257	2.57M Toe Board	2.57	7.90	17.40	140	Rack
RSTBH307	3.07M Toe Board	3.07	9.33	20.55	140	Rack

Steel Toe Board

Steel Toe Board-Hook Type

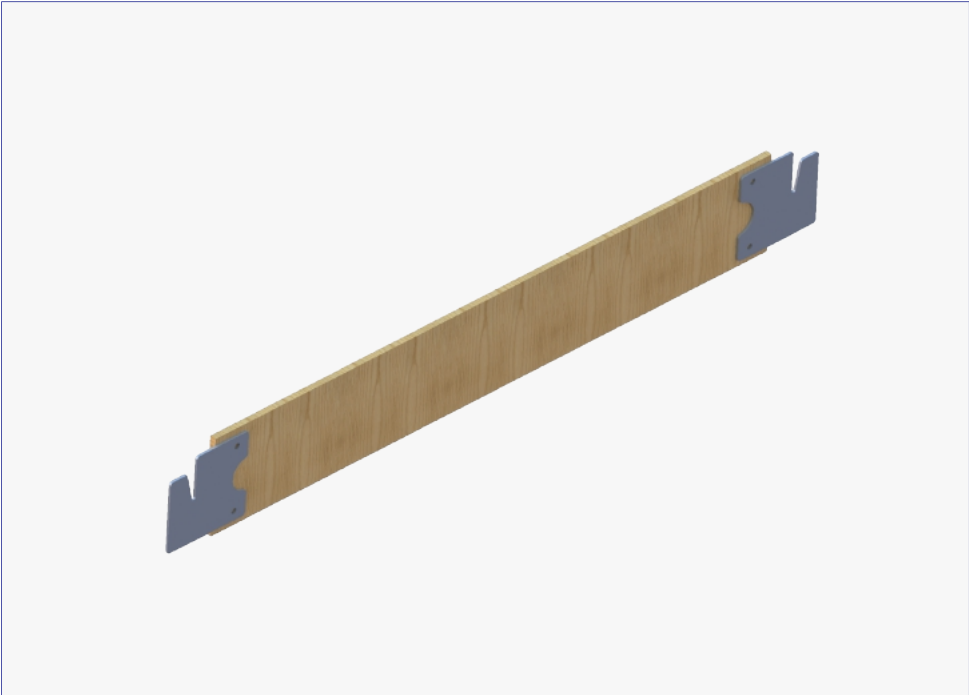
Ringlock Steel Toe Board, Height:150mm, Steel Grade: S235. Surface treatment:Pre-galvanized.



Item No.	Description	Length	Weight (kgs)	Packaging	
		Meters	Kgs	Qty.	Type
WP0595	0.60M Interlock Toeboard	0.60	2.10	280	RACK
WP0596	0.65M Interlock Toeboard	0.65	2.12	280	RACK
WP0597	0.84M Interlock Toeboard	0.84	2.6	280	RACK
WP0598	0.88M Interlock Toeboard	0.88	2.77	280	RACK
WP0599	1.065M Interlock Toeboard	1.065	3.29	140	RACK
WP0600	1.15M Interlock Toeboard	1.15	3.6	140	RACK
WO0601	1.52M Interlock Toeboard	1.52	4.59	140	RACK
WP0602	1.57M Interlock Toeboard	1.57	4.75	140	RACK
WP0603	1.82M Interlock Toeboard	1.82	5.5	140	RACK
WP0604	2.13M Interlock Toeboard	2.13	6.27	140	RACK
WP0605	2.43M Interlock Toeboard	2.43	7.19	140	RACK
WP0606	3.05M Interlock Toeboard	3.05	8.84	140	RACK

Wooden Toe Board

Ringlock Wood Toe Board, Wood. Width:150mm, Height:30mm,Wood



Item No.	Description	Length	Weight (kgs)		Packaging	
		Meters	Kgs	Lbs	Qty.	Type
RWTB073	0.73M O-Toe Board	0.73	3.14	6.92	280	Rack
RWTB109	1.09M O-Toe Board	1.09	4.28	9.43	140	Rack
RWTB129	1.40M O-Toe Board	1.40	5.25	11.56	140	Rack
RWTB157	1.57M O-Toe Board	1.57	5.79	12.75	140	Rack
RWTB207	2.07M O-Toe Board	2.07	7.36	16.21	140	Rack
RWTB257	2.57M O-Toe Board	2.57	8.94	19.69	140	Rack
RWTB307	3.07M O-Toe Board	3.07	10.51	23.15	140	Rack

Starter/ Base Collar

The base collar is the beginning of the Ringlock scaffolding system. It sits upon a fixed or adjustable base.



Item No.	Description	Length	Weight (kgs)		Packaging	
		Meters	Kgs	Lbs	Qty.	Type
RSBC1	Starter/Base Collar	0.24	1.70	3.74	385	Rack
RSBC2	Starter/Base Collar	0.31	1.80	3.96	385	Rack

Adjustable Base Jack

Ringlock adjustable base jack is used for leveling the scaffold-standards at the same height.
OD: 38.1x4.5mm. Base plate: 150x150x6mm. Surface treatment: Hot dip galvanized or Electroplated.



Item No.	Description	Length	Weight (kgs)		Packaging	
		Meters	Kgs	Lbs	Qty.	Type
CSJB	0.6M Adjustable Base Jack	0.60	3.40	7.49	220	Rack

Swivel Base Jack

The swivel base jack can be used when standards need to be placed on slopes. OD: 38.1x4.5mm. Base plate: 150x150x6mm. Surface treatment: Hot dip galvanized or Electroplated.



Item No.	Description	Length	Weight (kgs)		Packaging	
		Meters	Kgs	Lbs	Qty.	Type
CSJS	0.6M Swivel Base Jack	0.60	4.27	8.15	220	Rack

Adjustable Caster Adapter

Caster Adapter is mainly used for connecting caster wheel to the vertical pole.



Item No.	Description	Weight (kgs)		Packaging	
		Kgs	Lbs	Qty.	Type
RACA8	Adjustable Caster Adapert(8" Caster)	3.70	8.15	144	Rack
RACA12	Adjustable Caster Adapert(12" Caster)	4.02	8.85	144	Rack

Caster Wheel

Scaffolding caster wheel is used at bottom of scaffolding vertical tube, enabling the scaffolding system to be a mobile Platform.



Item No.	Description	Length	Weight (kgs)		Packaging	
		Meters	Kgs	Lbs	Qty.	Type
CW12	8" Caster Wheel	0.20	4.50	9.91	100	Rack
CW12	12" Caster Wheel	0.30	19.00	41.85	100	Rack

U Head

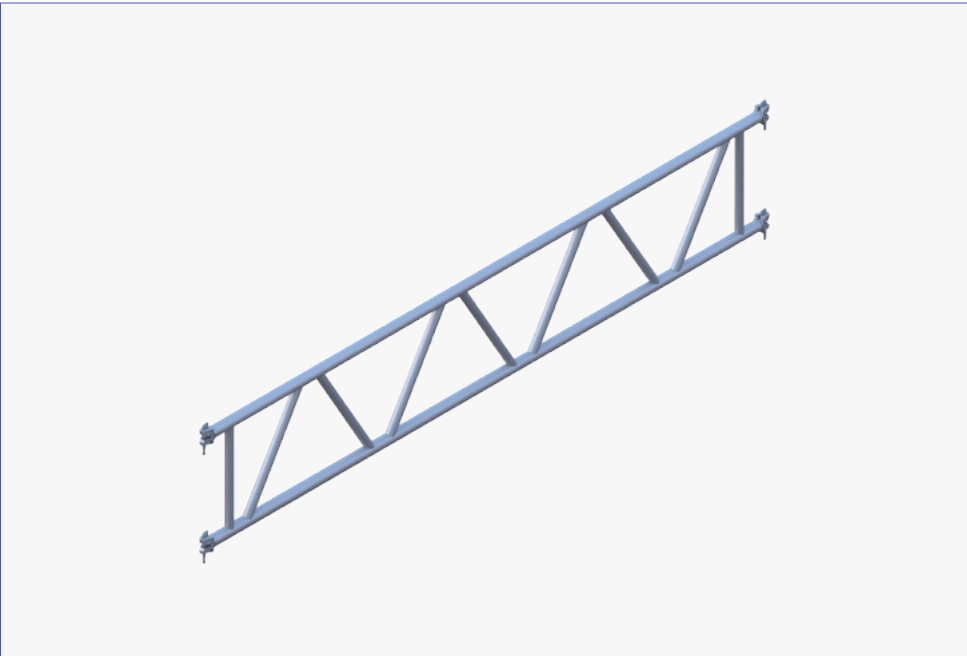
U head is used for the support for steel beams. OD:38.1x4.5mm. Plate: 150x150x6mm. Surface Treatment: Hot dip galvanized or Electroplated.



Item No.	Description	Length	Weight (kgs)		Packaging	
		Meters	Kgs	Lbs	Qty.	Type
RUH600	0.6M U head	0.60	4.40	9.69	220	Rack

Ringlock Lattice Beam

The Lattice beam have a high load-bearing capacity allows for bridging over larger span. Tube size: 48.3x3.2mm. Steel Grade: S235 or S355.Surface Treatment: Hot dip galvanized/Pre-galvanized.

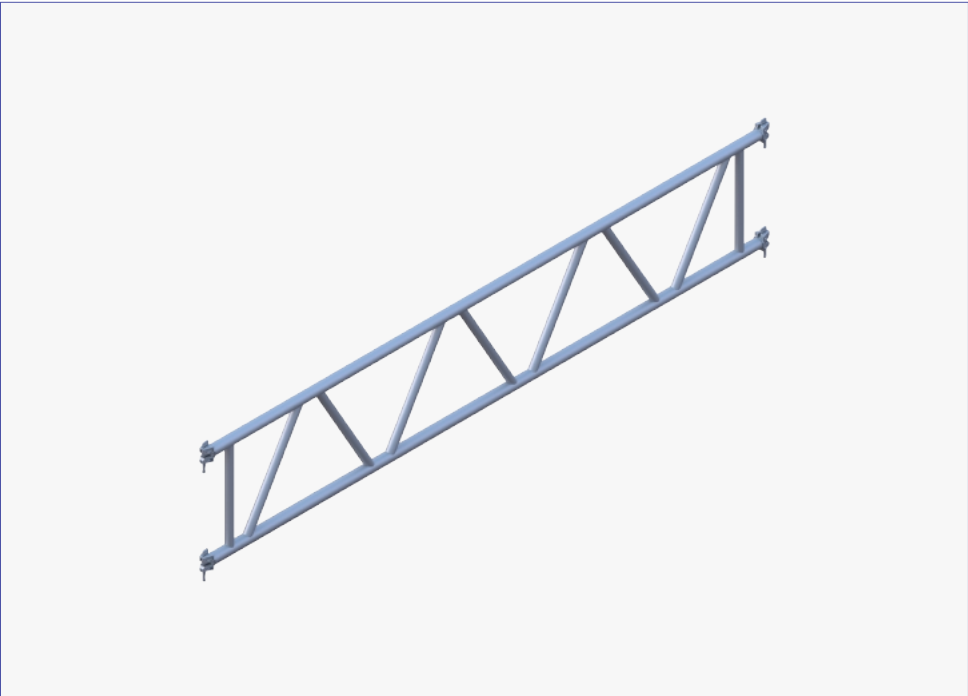


Item No.	Description	Length	Weight (kgs)		Packaging	
		Meters	Kgs	Lbs	Qty.	Type
RLB207	2.07M Lattic Beam	2.07	23.00	50.66	20	Bundle
RLB257	2.57M Lattic Beam	2.57	28.52	62.82	20	Bundle
RLB307	3.07M Lattic Beam	3.07	32.07	70.64	20	Bundle
RLB414	4.14M Lattic Beam	4.14	43.24	109.90	20	Bundle
RLB514	5.14M Lattic Beam	5.14	54.27	109.90	20	Bundle
RLB614	6.14M Lattic Beam	6.14	63.34	139.52	20	Bundle

Ringlock Lattice Beam

Ringlock Lattice Girder, No Spigot

The Lattice Girder has a high load-bearing capacity allows for bridging over larger span.
Tube size: 48.3x3.2mm. Steel Grade: S235. Surface Treatment: Hot dip galvanized



Item No.	Description	Length	Weight (kgs)	Packaging
		Meters	Kgs	Type
RL1741	4.26M x 0.5M Lattice Girder	4.26	42.90	IN BULK
RL1742	5.17M x 0.5M Lattice Girder	5.17	53.30	IN BULK
RL1743	6.39M x 0.5M Lattice Girder	6.39	63.90	IN BULK
RL1744	8.52M x 0.5M Lattice Girder	8.52	84.90	IN BULK

Guardrail Post/Standard

The guardrail Standard is designed to provide a vertical connetion to secure Ledger. Surface treatmnt: Hot dip galvanized.



Guardrail Post/Standard

VERTICAL MID TRANSOM - 0.5M

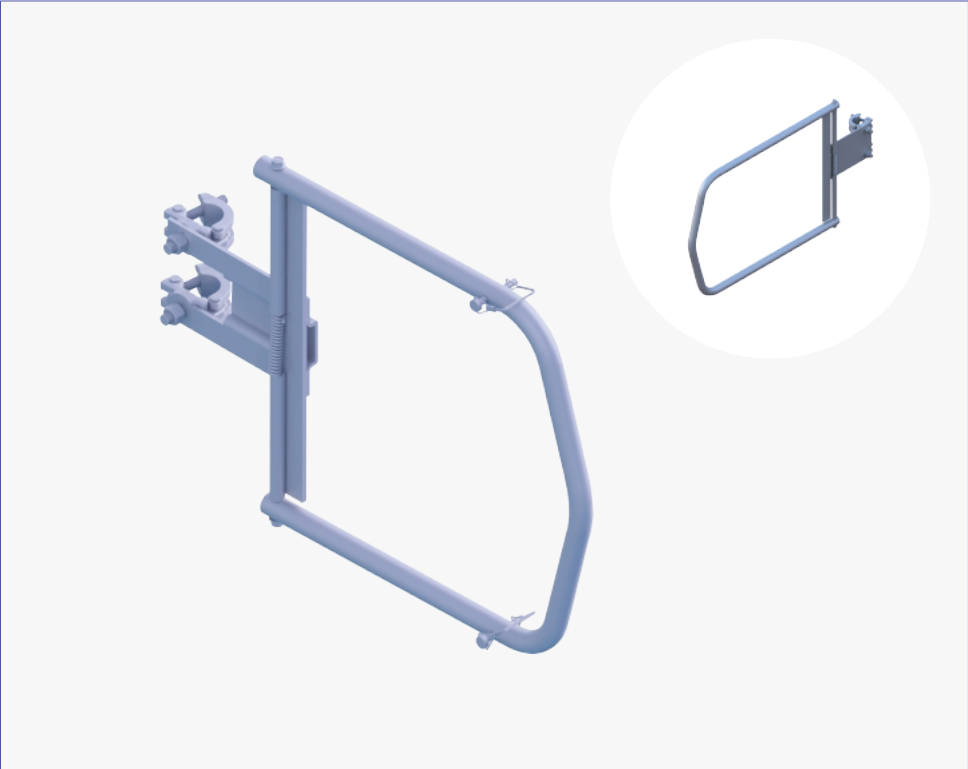
The Vertical Mid Transom fits vertically between two Ledgers positioned 0.5m apart and is attached with Half Clamps.



Item No.	Description	Length	Weight (kgs)	Packaging	
		Meters	Kgs	Qty.	Type
RL1751	0.5m Vertical Mid Transom	0.50	3.40	120	Rack

Starter/ Base Collar

The base collar is the beginning of the Ringlock scaffolding system. It sits upon a fixed or adjustable base.

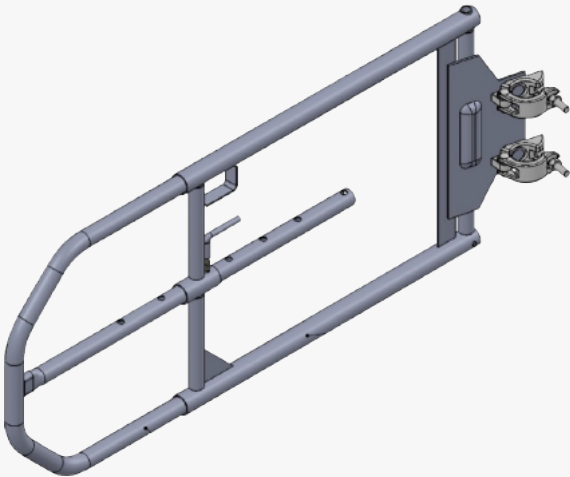


Item No.	Description	Length	Weight (kgs)		Packaging	
		Meters	Kgs	Lbs	Qty.	Type
RCW	0.73M Gate Expandable Safety Gate	0.64~0.81	5.20	11.45	36	Rack
RCWL	1.09M Gate Expandable Safety Gate	0.88~1.4	9.00	19.82	36	Rack

Starter/ Base Collar

Adjustable Swing Gate

The safety gate allows safe access to the working platform.

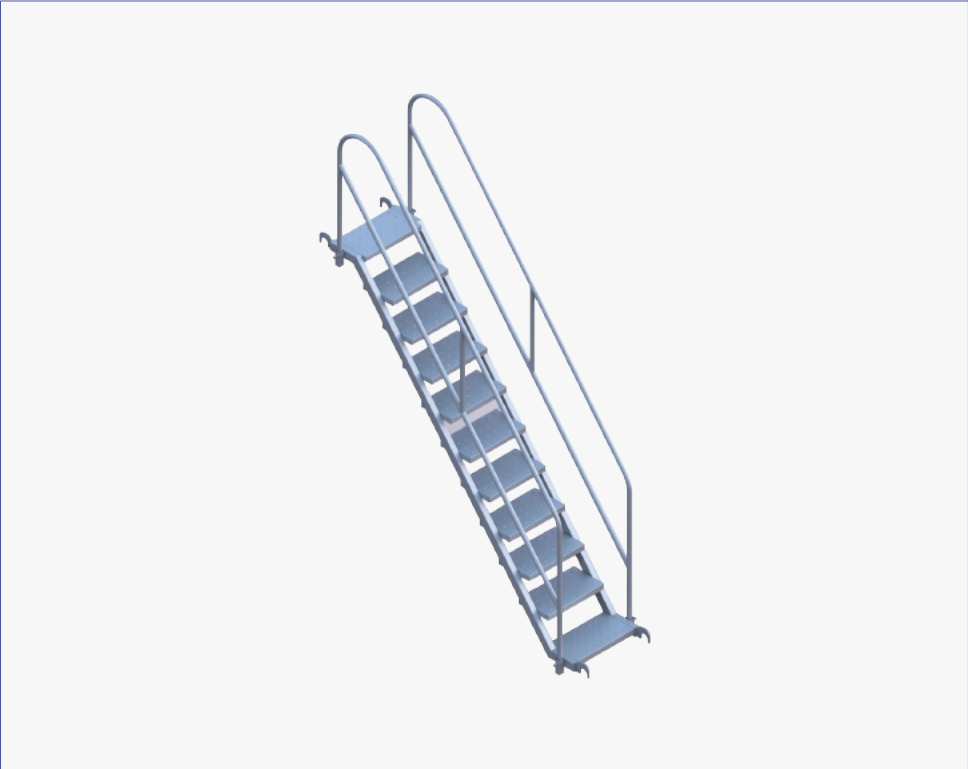


Item No.	Description	Length	Weight (kgs)	Packaging
		Meters	Kgs	Type
RL1741	4.26M x 0.5M Lattice Girder	4.26	42.90	IN BULK
RL1742	5.17M x 0.5M Lattice Girder	5.17	53.30	IN BULK
RL1743	6.39M x 0.5M Lattice Girder	6.39	63.90	IN BULK
RL1744	8.52M x 0.5M Lattice Girder	8.52	84.90	IN BULK

Steel Stair with Handrails

Steel Stair with Handrails 2.0m Lift O-Type

Steel Stair with Handrails, 500mm Width, Q235 Steel, Hot Dip Galvanized.



Item No.	Description	Length	Weight (kgs)		Packaging	
		Meters	Kgs	Lbs	Qty.	Type
RSPS257	Steel Stair with Handrails	2.57x0.64	77.80	171.37	14	Rack
RAPS307	Steel Stair with Handrails	3.07x0.64	92.94	204.71	14	Rack

Aluminum Platform Stair

Aluminum Platform Stair 2.0m Lift O-Type

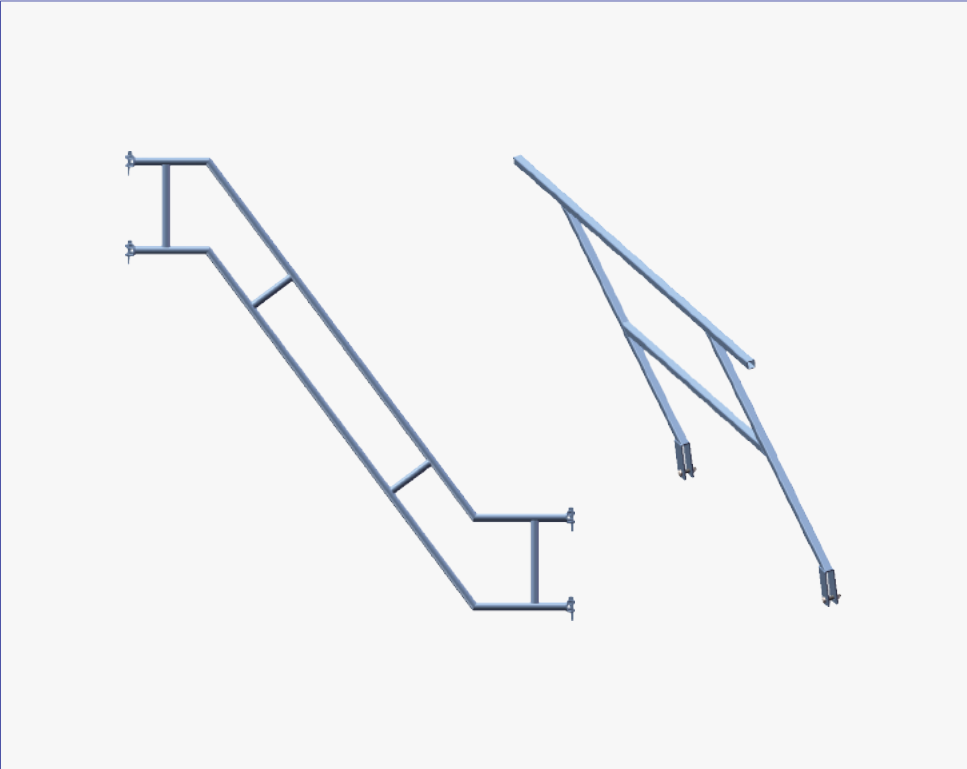
Aluminium Platform Stair O-Type is a complete stair unit with built-in landings.



Item No.	Description	Length	Weight (kgs)		Packaging	
		Meters	Kgs	Lbs	Qty.	Type
RAPS257	Aluminum Platform Stair	2.57x0.64	28.00	61.67	13	Rack
RAPS307	Aluminum Platform Stair	3.07x0.64	33.00	72.69	13	Rack

Platform Stairs Guardrails

The Steel Stair Guardrails are used to provide handrails on the inner side and outer side of the Aluminium Stair Platforms.

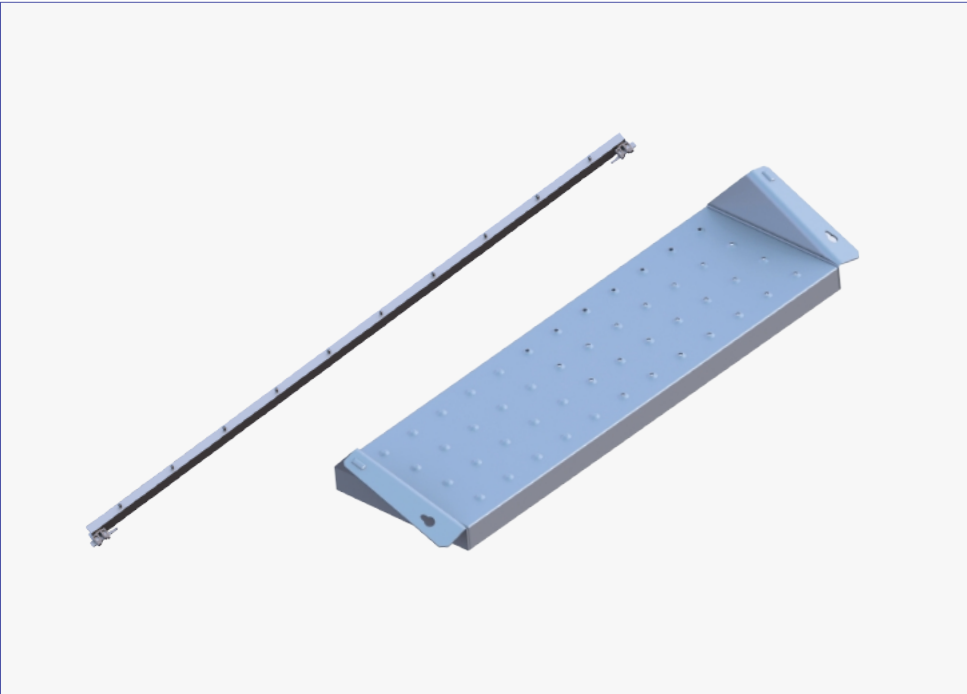


Item No.	Description	Length	Weight (kgs)		Packaging	
		Meters	Kgs	Lbs	Qty.	Type
RPSGO257	Outer Guardrail	2.57x2.0	22.65	49.89	20	Rack
RPSGO307	Outer Guardrail	3.07x2.0	25.20	55.51	20	Rack
RPSGI307	Internal Guardrail	2.57/3.07x2.0	11.50	25.33	20	Rack

Platform Stairs Guardrails

Stair Stringer and Stair Tread

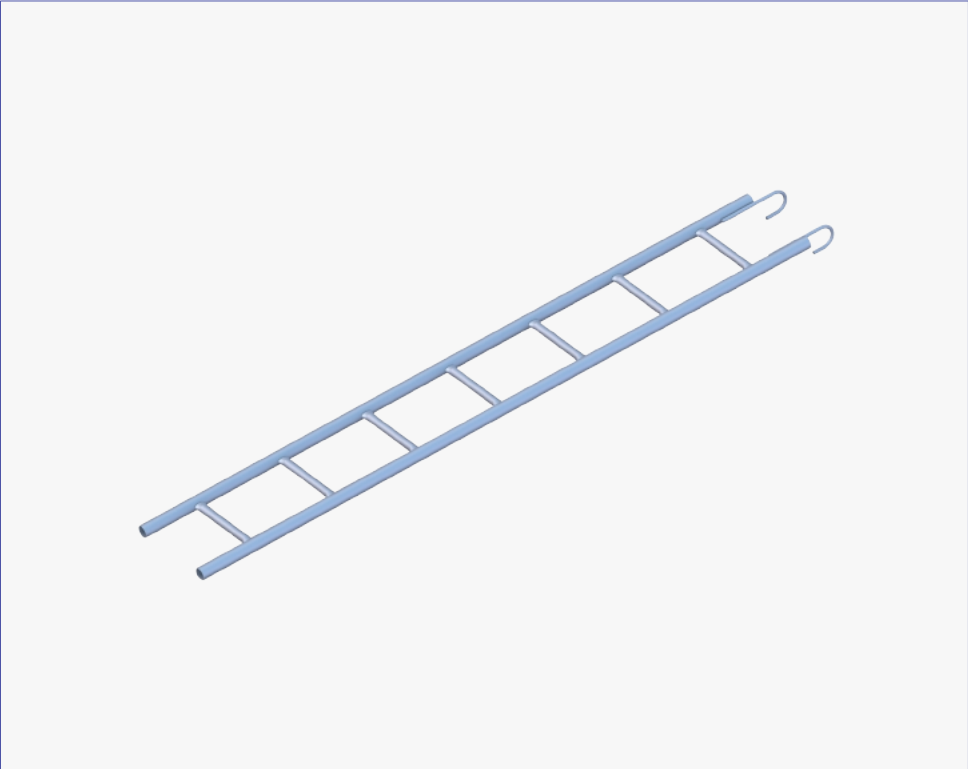
Ringlock staircase tower incorporate purpose designed stairway units and offer a safer, quicker and more efficient, route between levels on site.



Item No.	Description	Weight (kgs)	Packaging	
		Kgs	Qty.	Type
RL1748	1.065M x 1.0m Lift Stringer	8.98	100	Rack
RL1747	2.13M x 2.0m Lift Stringer	15.50	100	Rack

Monkey Ladder

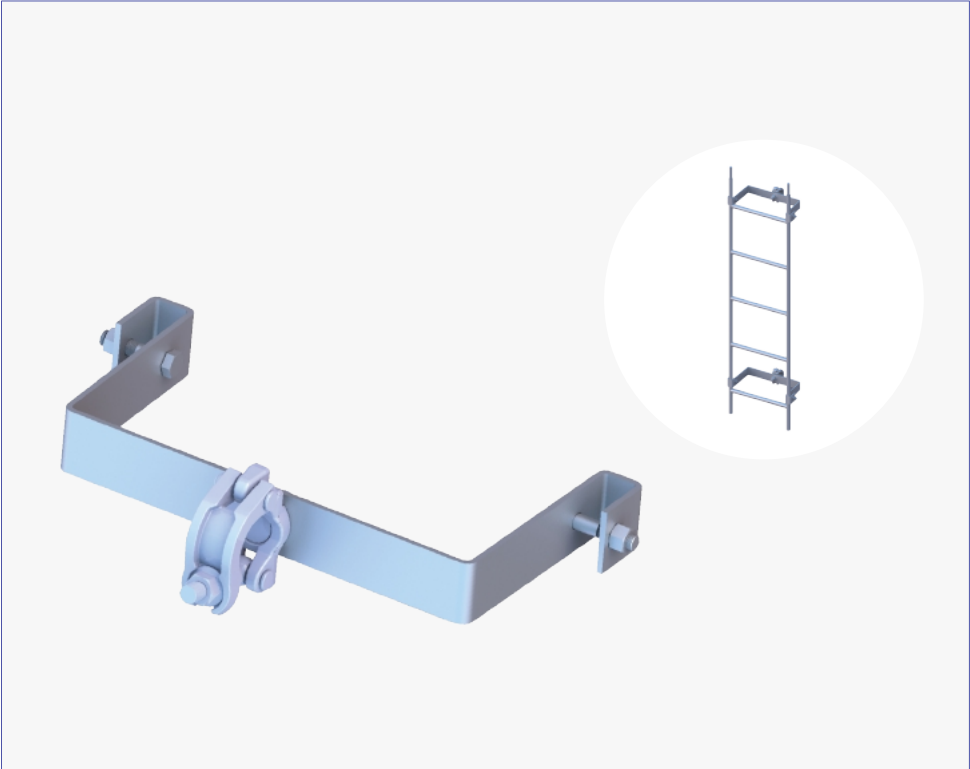
The Monkey Ladder,Tube Size: OD42x2mm, Steel Type: Q235. Surface Treatment: Hot dip galvanized. It is designed to provide safe access to the various deck levels.



Item No.	Description	Length	Weight (kgs)		Packaging	
		Meters	Kgs	Lbs	Qty.	Type
RML2220	2.22M Monkey Ladder	2.22	12.10	26.65	25	Bundle
RML2780	2.78M Monkey Ladder	2.78	15.50	34.14	25	Bundle
RML3330	3.33M Monkey Ladder	3.33	18.50	40.75	25	Bundle

Ladder and Ladder Bracket

The Ladder is designed to attach (using Ladder Brackets) on the inside or outside of a scaffold to provide safe access to the various deck levels.



Item No.	Description	Length	Weight (kgs)		Packaging	
		Meters	Kgs	Lbs	Qty.	Type
RSAL1	1.0M Ladder	1.00	9.80	21.59	25.00	Bundle
RSAL2	2.0M Ladder	2.00	15.00	33.04	25.00	Bundle
RSAL3	3.0M Ladder	3.00	18.60	40.97	25.00	Bundle
RSALB	Ladder Bracket	0.35	3.00	6.61	170.00	Rack+Insert

Ringlock Accessories

Ringlock Spigot Adapter Clamp

The spigot Adapter Clammp allows the connecction of Ringlcok Standards at intermediate locations along the length of O-Type Ledgers, Truss Ledgers and Girders.

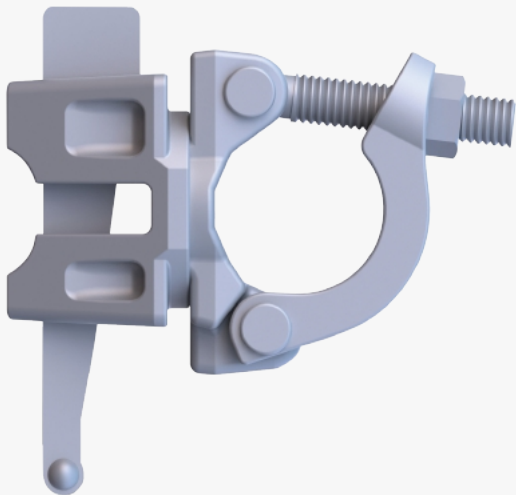


Item No.	Description	Weight (kgs)		Packaging	
		Kgs	Lbs	Qty.	Type
RSC	Spigot Adapter Clamp	1.70	3.74	650	Rack+Insert

Ringlock Accessories

Right Angle Adapter Clamp

The right angle wedge head coupler is designed to easily join a scaffold tube directly to the rosette at 90 degrees.

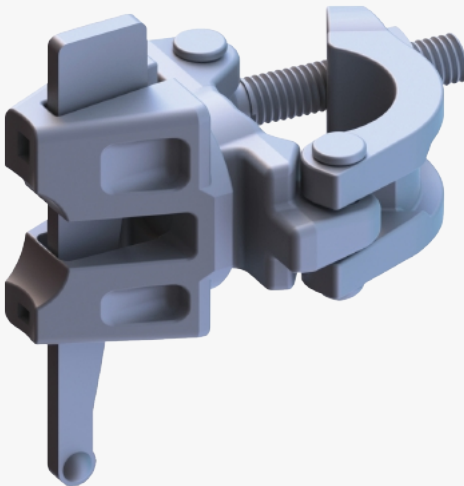


Item No.	Description	Weight (kgs)		Packaging	
		Kgs	Lbs	Qty.	Type
RWR	Wedge head coupler, right angle, I bolt	1.56	3.44	650	Rack+Insert

Ringlock Accessories

Wedge Head Swivel Coupler

The swivel adapter clamp is designed to easily join a scaffold tube to the rosette of a Ringlock scaffold producing a variety of angles and configurations.

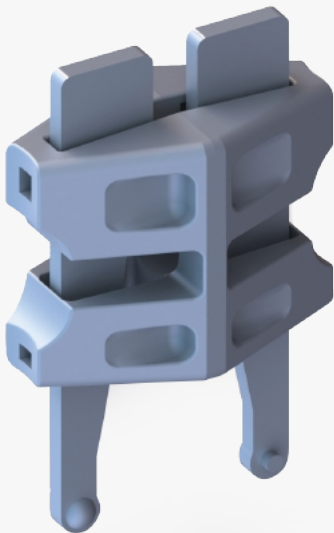


Item No.	Description	Weight (kgs)		Packaging	
		Kgs	Lbs	Qty.	Type
RWR	Wedge head coupler, right angle, 1 bolt	1.56	3.44	650	Rack+Insert

Ringlock Accessories

Wedge Head Coupler

Wedge head coupler allows the connection of ringlock standards to enforce its strength.

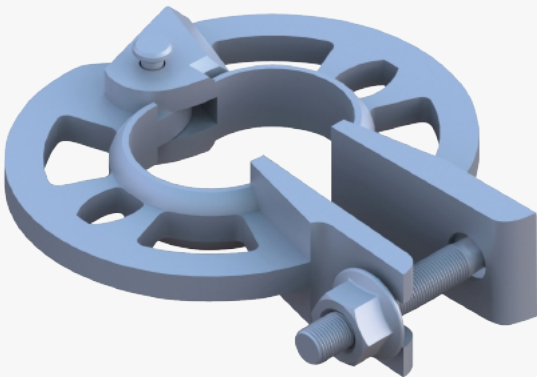


Item No.	Description	Weight (kgs)		Packaging	
		Kgs	Lbs	Qty.	Type
WHC	Wedge head coupler	1.40	3.08	650	Rack+Insert

Ringlock Accessories

Rosette Clamp

The rosette clamp is used to add a rosette at any point on a vertical standard or tube.



Item No.	Description	Weight (kgs)		Packaging	
		Kgs	Lbs	Qty.	Type
RRC	Rosette Clamp, 22mm	1.19	2.62	750	Rack+Insert

Ringlock Accessories

Right Angle Clamp

The Right Angle Clamp British is designed to be used in conjunction with scaffold tube to create 90 degree angles.

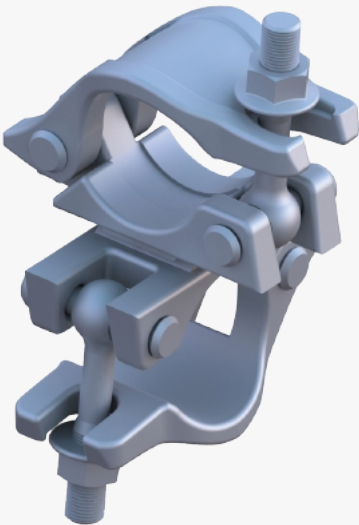


Item No.	Description	Weight (kgs)		Packaging	
		Kgs	Lbs	Qty.	Type
RCA	Right Angle Clamp	1.00	3.30	700	Rack+Insert

Ringlock Accessories

Swivel Clamp

The Swivel Clamp British is designed to be used in conjunction with scaffold tube to create a variety of angles.

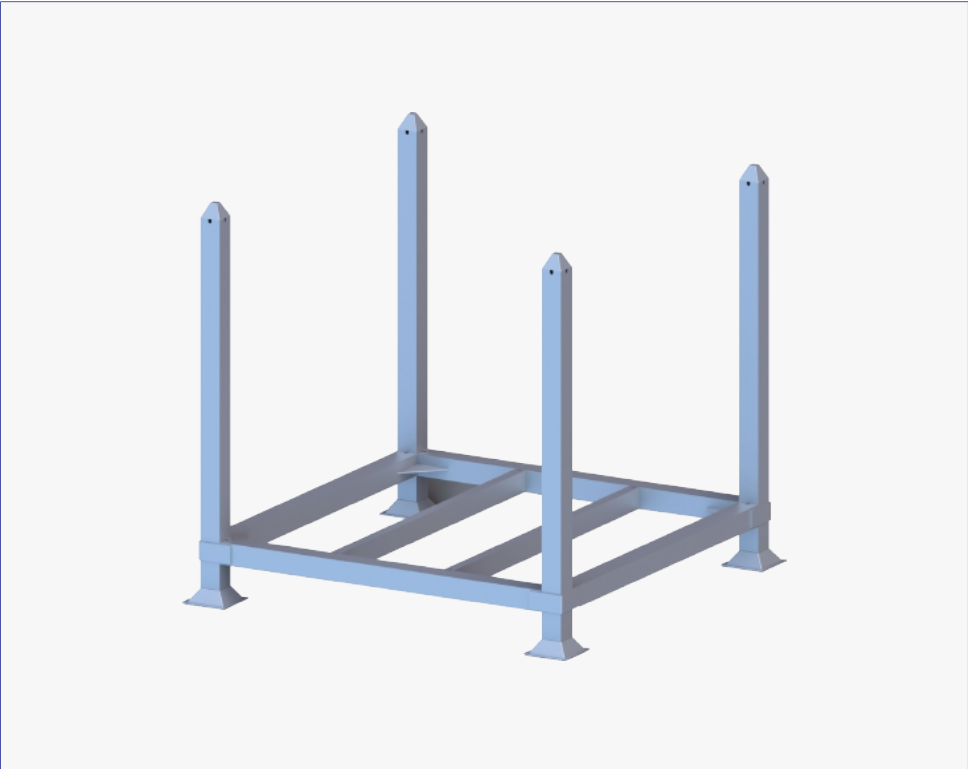


Item No.	Description	Weight (kgs)		Packaging	
		Kgs	Lbs	Qty.	Type
RCS	Swivel Clamp	1.10	4.03	700	Rack+Insert

Ringlock Accessories

Scaffold Rack

The scaffold rack is deisnged to load scaffolding components for transportation.



Item No.	Description	Weight (kgs)		Packaging	
		Kgs	Lbs	Qty.	Type
CSR1	Scaffold Rack 1.06x1.06x0.87M	46.00	101.32	1	Rack
CSR2	Scaffold Rack 1.06x1.06x1.10M	55.00	121.15	1	Rack

Ringlock Accessories

Scaffold High Rack

The scaffold High rack is deisnged for steel planks.



Item No.	Description	Weight (kgs)		Packaging	
		Kgs	Lbs	Qty.	Type
AS0203	Scaffold Basket Rack 42"x42"x34.25" (1060x1060x870mm)	60	132.16	1	Rack

Ringlock Accessories

Scaffold Cage Insert

The scaffold cage insert is designed to fit into the storage rack, to creaat the Basket for storage of clamps and accessories.



Item No.	Description	Weight (kgs)		Packaging	
		Kgs	Lbs	Qty.	Type
CSCI	Scaffold Cage Insert 1.06x1.06x0.87M	70.00	154.19	1	Rack



RINGLOCK SYSTEM

North America



CHINA

5 Xinghan Street, Suzhou, Jiangsu 215021

USA

HOUSTON, TX: 1133 East Airtex Drive Houston, TX 77073

Office. 1-346-340-4113

Toll Free. 1-844-821-0036

EMAIL

coronet@scaffolding.com

WEB

www.scaffolding.com

We are the leading scaffolding supplier.

CORONET 2025