



# RINGLOCK SYSTEM

North America

WE  
PROVIDE  
SCAFFOLDING  
GLOBALLY.

Building the Future.

CORONET 2026

# TABLE OF CONTENTS



## **INTRODUCTION** **02**

## **OVERVIEW** **03-05**

## **RINGLOCK** **06-45**

Ringlock Standard	06
Ringlock Ledger O-Type	07-08
Ringlock Double Ledger O-Type	09
Ringlock Truss Ledger O-Type	10
Ringlock Braces	11-13
Ringlock Brackets	14-15
Ringlock	16-17
Work Platforms	18-20
Access & Egress	21
Safety Gate	22
Adjustable Base Jack	23
Swivel Base Jack	24
Adjustable Caster Adapter	25
12" Caster Wheel	26
Starter/ Base Collar	27
Staircase and Steps	28
Stair Tread	29
Interlocking Toeboard	30
Adjustable Toeboard	31
Non-Slip Steel Ladder	32
Ladder Bracket	33
Tube Lock / Interlock Tubes	34
Ringlock Accessories	35-48



# ABOUT CORONET

Since its inception in the scaffolding business, the 'Coronet®' brand has stood for quality. With nearly two decades of successful operation, Coronet has emerged as the world's largest exporter of scaffolding to the North American market over the past years, as per the latest publicly available custom data.

Coronet USA serves as the American division of the Coronet Scaffolding Group. Our corporate offices are based in Suzhou, China, while our American operations are directed from offices in Houston, TX.

As a leading player in the scaffolding industry, we prioritize the well-being and happiness of our employees, whom we consider the cornerstone of our success. With values centered on 'customer first,' 'integrity,' and 'team cooperation,' Coronet stands out as an active, innovative, and passionate company. We extend our gratitude to all those who have placed their trust in Coronet over the years, and we welcome new customers to join us in our journey.



**CORONET'S VALUES**  
**Customers first, Integrity, Teamwork.**



# OVERVIEW

## Coronet Quality

Coronet Products hold comprehensive product liability insurance provided by esteemed US carriers. We prioritize exceeding industry standards through our stringent quality assurance programs, ensuring that our scaffolding stands as the safest and most reliable worldwide.

At Coronet, we boast an in-house laboratory designed not just for material (mill) tests but also for diverse load testing, equipped with Transcell® load sensors. Our test engineers undergo rigorous training from accredited third parties, and we meticulously document and file test reports for complete traceability.

We firmly believe in hands-on action and going above and beyond.

### MATERIAL

Coronet only uses the high tensile steel S355 (The equivalent A572 Gr. 50, USA, ASTM. (Min.yield of 51,000 psi/ min. tensile of 68,000 psi) for main parts in our products. Our steel is certified and test for every batch, meeting and exceeding industry standards.

### WELDING

Robot welding process monitoring and control involves routine or continuous monitoring of process variables, particularly current, time and force. Conduct 100% pre-tension testing on ledger products to prevent welding defects.

### FINISHING

Coronet system scaffolds are finished and protected by hot-dipped zinc galvanized. This finishing method ensures maximum surface durability.

### TRACEABILITY

All system scaffolds are imprinted with traceable codes to ensure quality assurance.

# OVERVIEW

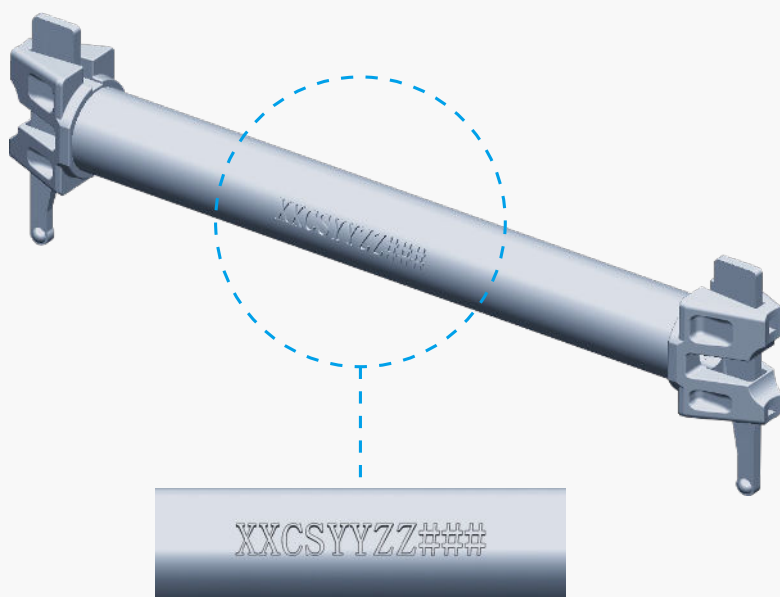
## Product Traceability

**All coronet components are stamped with traceability marks.**

Batch number: XX CS YY ZZ ####

XX= Serial Number CS= Coronet Scaffold YY= Month of Manufacture

ZZ= Year of Manufacture ####= Order Number

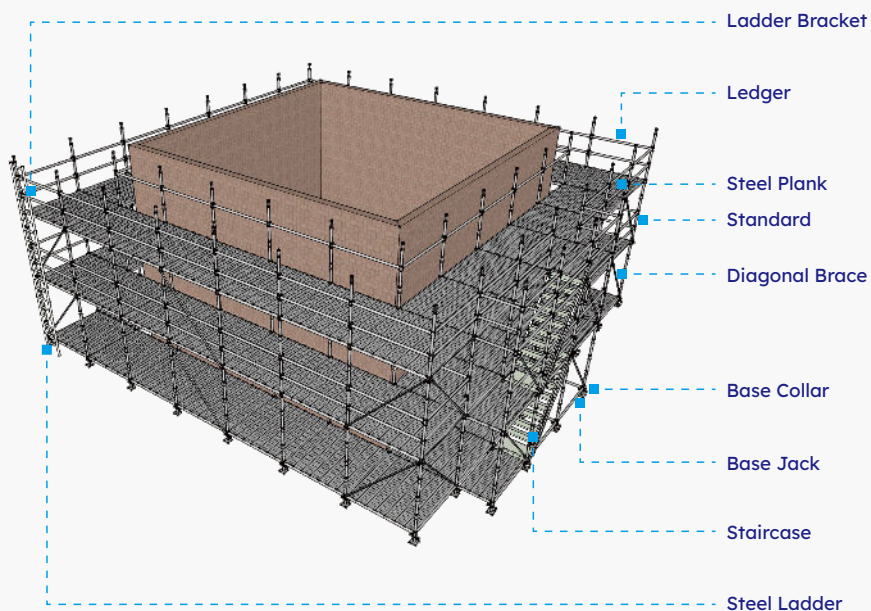


# OVERVIEW

## Component

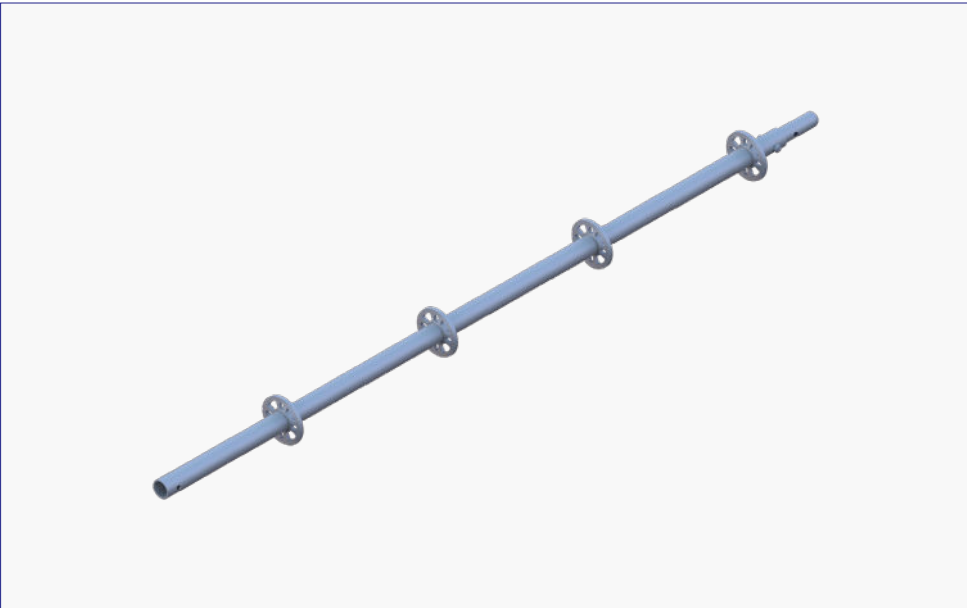
### Component Identification

The following diagram represents the most common Ringlock components used. Most scaffold structure are made from these basic components yet the Ringlock system comes with a variety of accessories for all your scaffolding requirements.



# Ringlock Standard

Ringlock Standard(Vertical) has rosettes at 500mm interval, Tube size: OD48.3x3.2mm, Steel Grade:S355 (The equivalent A572 Gr. 50, USA, ASTM. Min.yield of 51,000 psi; Min. tensile of 68,000 psi). Surface treatment: Hot dip galvanized.

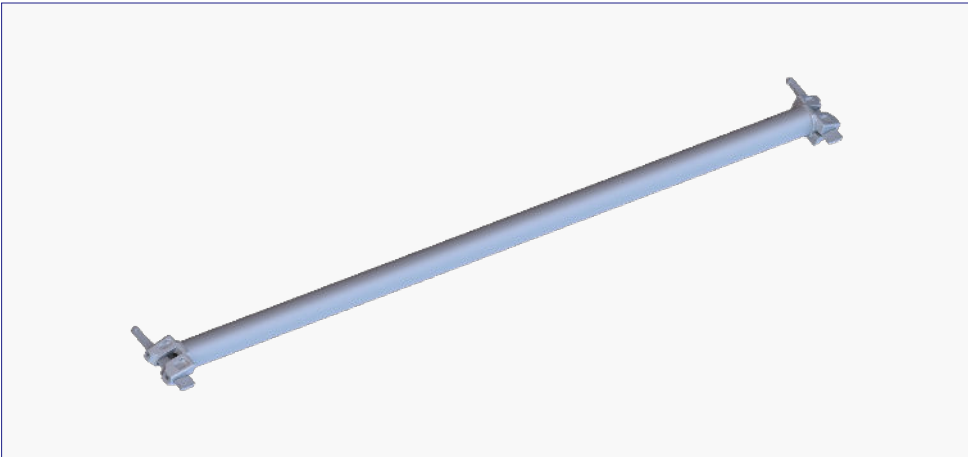


Item No.	Description	Size		Weight (kgs)		Packaging	
		Meters	Feet	Kgs	Lbs	Qty.	Type
RL0264	6 Ring Standard 3.0m w/ spigot	3.0	9'-9"	14.56	32.07	100	Rack
RL0182	5 Ring Standard 2.5m w/ spigot	2.5	8'-2"	12.26	27.00	100	Rack
RL0218	4 Ring Standard 2.0m w/ spigot	2.0	6'-6"	9.95	21.92	100	Rack
RL0096	3 Ring Standard 1.5m w/ spigot	1.5	4'-11"	7.65	16.85	100	Rack
RL0084	2 Ring Standard 1.0m w/ spigot	1.0	3'-3"	5.34	12.10	100	Rack
RL0010	1 Ring Standard 0.5m w/ spigot	0.5	1'-8"	3.04	6.70	200	Rack

[Other sizes can be customized.](#)

## Ringlock Ledger O-Type

Ringlock Horizontal, Tube size: OD48.3x3.2mm, Steel Grade: S355 (The equivalent A572 Gr. 50, USA, ASTM. Min.yield of 51,000 psi; Min. tensile of 68,000 psi). Surface treatment: Hot dip galvanized. Ledgers are also used as guard rail.



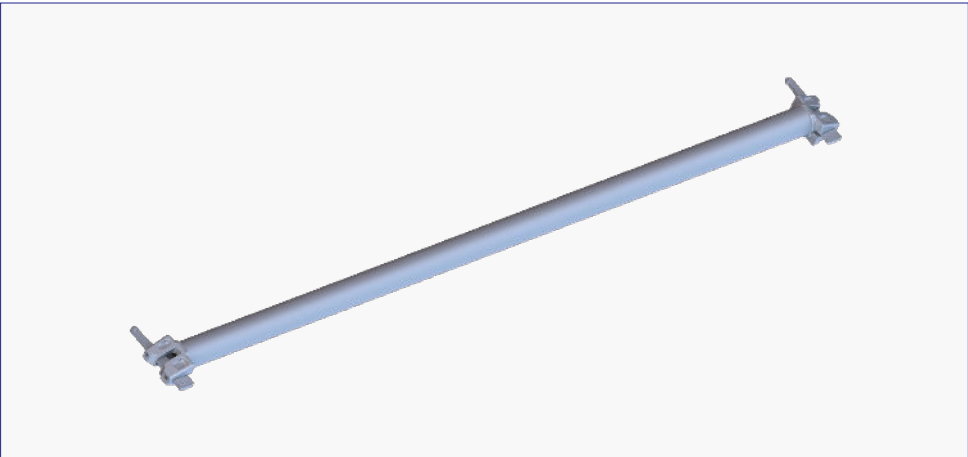
Item No.	Description	Size		Weight (kgs)		Packaging	
		Meters	Feet	Kgs	Lbs	Qty.	Type
RL0120	1' Ledger O-Type 305mm	0.305	1'	1.86	4.10	600	Rack
RL0633	2' Ledger O-Type 610mm	0.61	2'	2.94	6.48	300	Rack
RL0681	2'-2" Ledger O-Type 650mm	0.65	2'-2"	3.08	6.78	300	Rack
RL1482	2'-5" Ledger O-Type 732mm	0.732	2'-5"	3.37	7.42	300	Rack
RL1509	2'-10"Ledger-O-Type 880mm	0.88	2'-10 5/8"	3.90	8.59	300	Rack
RL0268	3' Ledger O-Type 914mm	0.914	3'	4.02	8.85	150	Rack
RL0621	3'-6" Ledger O-Type 1065mm	1.065	3'-6"	4.56	10.04	150	Rack
RL1483	3'-7" Ledger O-Type 1090mm	1.09	3'-7"	4.65	10.24	150	Rack
RL0680	3'-10" Ledger O-Type 1150mm	1.15	3'-10"	4.86	10.70	150	Rack
RL1461	4' Ledger O-Type 1220mm	1.22	4'	5.11	11.26	150	Rack
RL1484	4'-3" Ledger O-Type 1286mm	1.286	4'-3"	5.34	11.76	150	Rack
RL0620	5' Ledger O-Type 1524mm	1.524	5'	6.19	13.63	150	Rack

[Other sizes can be customized.](#)



## Ringlock Ledger O-Type

Ringlock Horizontal, Tube size: OD48.3x3.2mm, Steel Grade: S355 (The equivalent A572 Gr. 50, USA, ASTM. Min.yield of 51,000 psi; Min. tensile of 68,000 psi). Surface treatment: Hot dip galvanized. Ledgers are also used as guard rail.

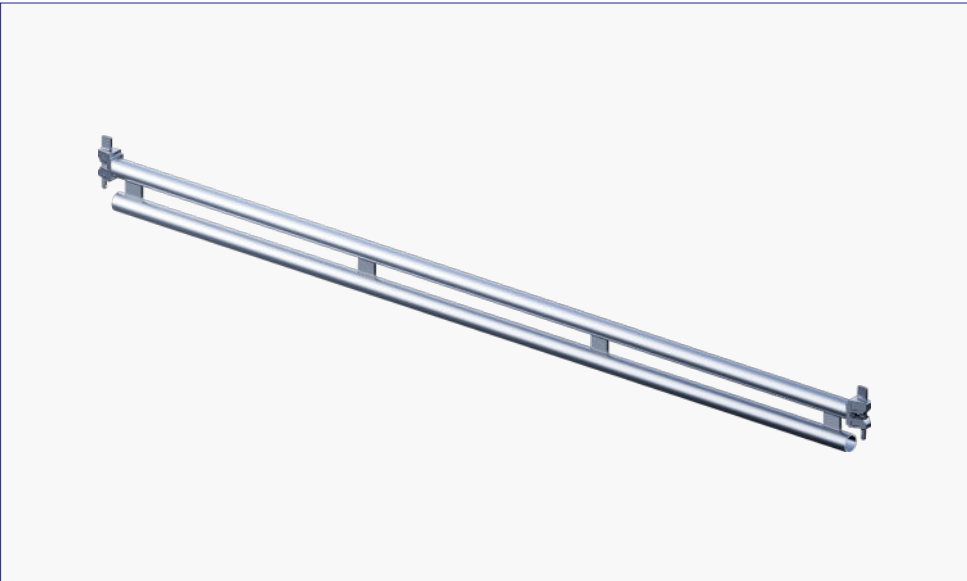


Item No.	Description	Size		Weight (kgs)		Packaging	
		Meters	Feet	Kgs	Lbs	Qty.	Type
RL0679	5'-2" Ledger O-Type 1572mm	1.572	5'-2"	6.36	14.01	150	Rack
RL1384	5'-4" Ledger O-Type 1625mm	1.625	5'-4"	6.55	14.43	150	Rack
RL1479	6' Ledger O-Type 1829mm	1.829	6'	7.27	16.01	150	Rack
RL1503	6'-9" Ledger O-Type 2072mm	2.072	6'-9"	8.13	17.91	150	Rack
RL1434	7' Ledger O-Type 2130mm	2.13	7'	8.34	18.37	150	Rack
RL0349	8' Ledger O-Type 2440mm	2.44	8'	9.44	20.79	150	Rack
RL1485	8'-6" Ledger O-Type 2572mm	2.572	8'-6"	9.91	21.83	150	Rack
RL1510	9' Ledger O-Type 2743mm	2.743	9'	10.52	23.17	150	Rack
RL0636	10' Ledger O-Type 3050mm	3.05	10'	11.61	25.57	150	Rack

[Other sizes can be customized.](#)

## Ringlock Double Ledger O-Type

The Double Ledger is engineered to enable higher service loads to the working platform.  
Tube size: OD48.3x3.2mm, Steel Grade:S355(The equivalent A572 Gr. 50, USA, ASTM. Min.yield of 51,000 psi; Min. tensile of 68,000 psi). Surface treatment: Hot dip galvanized.

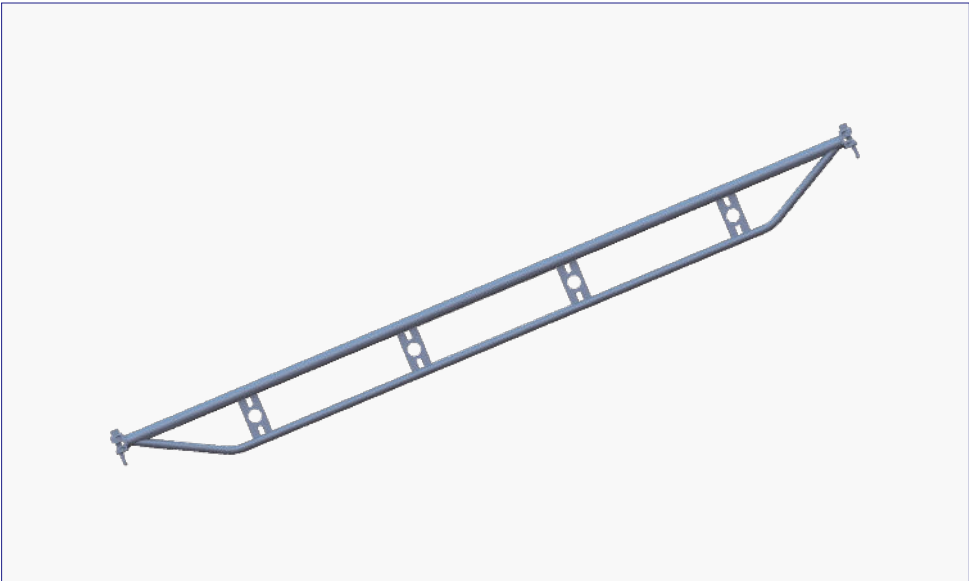


Item No.	Description	Size		Weight (kgs)		Packaging	
		Meters	Feet	Kgs	Lbs	Qty.	Type
RL1486	5' Double Ledger 1524mm	1.52	5'	11.45	25.22	60	Rack
RL1487	5'-2" Double Ledger 1572mm	1.57	5'-2"	11.79	25.97	60	Rack
RL1518	6' Double Ledger 1829mm	1.82	6'	13.75	30.29	60	Rack
RL0329	7' Double Ledger 2130mm	2.13	7'	15.89	35.00	60	Rack
RL1488	8' Double Ledger 2440mm	2.43	8'	18.09	39.85	60	Rack
RL1489	8'6" Double Ledger 2572mm	2.572	8'-6"	19.16	42.20	60	Rack
RL1519	9' Double Ledger 2743mm	2.74	9'	20.37	44.87	60	Rack
RL0623	10' Double Ledger 3050mm	3.05	10'	22.55	49.67	60	Rack

[Other sizes can be customized.](#)

## Ringlock Truss Ledger O-Type

The Truss Ledger is engineered to enable higher service loads to the working platform.  
Tube size: OD48.3x3.2mm, Steel Grade:S355 (The equivalent A572 Gr. 50, USA, ASTM. Min.yield of 51,000 psi; Min. tensile of 68,000 psi). Surface treatment: Hot dip galvanized.



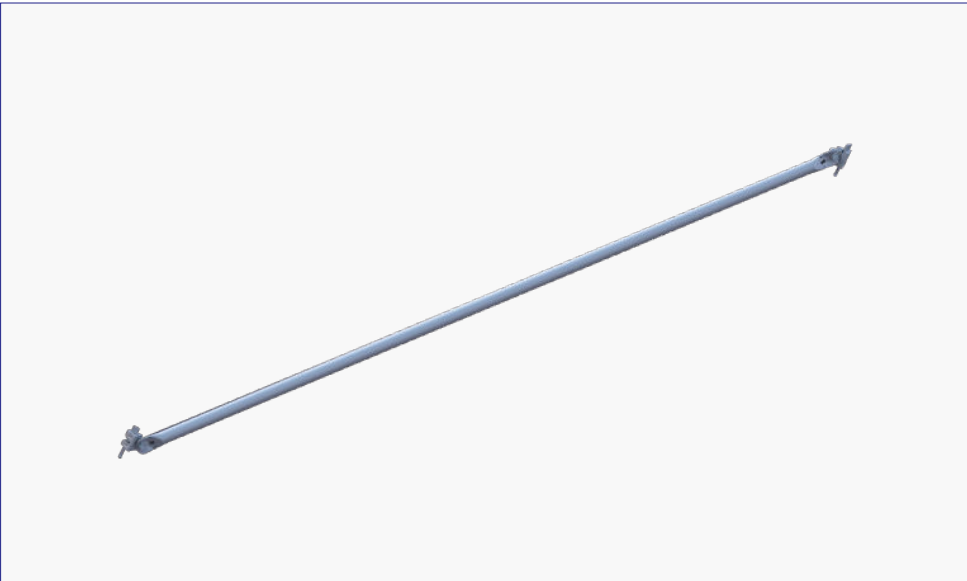
Item No.	Description	Size		Weight (kgs)		Packaging	
		Meters	Feet	Kgs	Lbs	Qty.	Type
RL1511	5' Truss Ledger 1524mm	1.52	5'	9.47	20.86	60	Rack
RL1512	5'-2" Truss Ledger 1572mm	1.572	5'-2"	9.74	21.45	60	Rack
RL1513	6' Truss Ledger 1829mm	1.82	6'	11.56	25.46	60	Rack
RL1514	7' Truss Ledger 2130mm	2.13	7'	13.62	30.00	60	Rack
RL0624	8' Truss Ledger 2440mm	2.43	8'	15.36	33.83	60	Rack
RL1515	8'6" Truss Ledger 2572mm	2.572	8'-6"	16.47	36.28	60	Rack
RL1516	9' Truss Ledgerr 2743mm	2.74	9'	17.43	38.39	60	Rack
RL1517	10' Truss Ledger 3050mm	3.05	10'	19.53	43.02	60	Rack

[Other sizes can be customized.](#)

# Ringlock Braces

## Bay Brace 6'-6" (2.0m) Lift

The Bay Brace is used for the lateral bracing of Ringlock scaffolds. Tube size: OD48.3x2.5mm, Steel Grade: S235. Surface treatment: Hot dip galvanized.



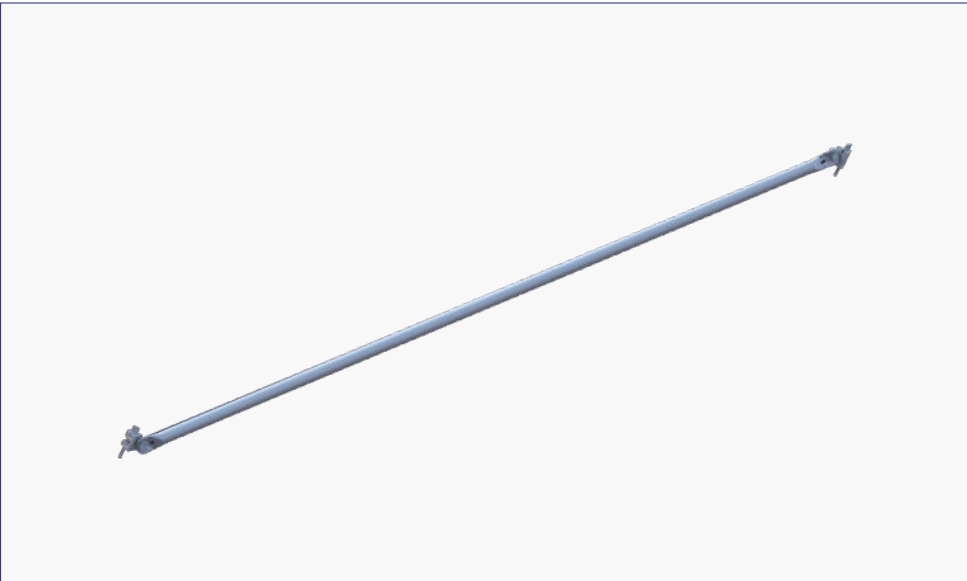
Item No.	Description	Size		Weight (kgs)		Packaging	
		Meters	Feet	Kgs	Lbs	Qty.	Type
RL0979	2' Bay Brace 609mm	0.60	2'	7.78	17.14	150	Rack
RL1044	2'-2" Bay Brace 650mm	0.65	2'-2"	7.81	17.20	150	Rack
RL1520	2'-10" Bay Brace 880mm	0.88	2'-10"	8	17.62	150	Rack
RL0221	3' Bay Brace 914mm	0.914	3'	8.04	17.71	150	Rack
RL0038	3'-6" Bay Brace 1065mm	1.065	3'-6"	8.21	18.08	150	Rack
RL0682	3'-10" Bay Brace 1150mm	1.15	3'-10"	8.31	18.30	150	Rack
RL0060	4' Bay Brace 1220mm	1.22	4'	8.4	18.50	150	Rack
RL0072	5' Bay Brace 1524mm	1.524	5'	8.86	19.52	150	Rack

[Other sizes can be customized.](#)

# Ringlock Braces

## Bay Brace 6'-6" (2.0m) Lift

The Bay Brace is used for the lateral bracing of Ringlock scaffolds. Tube size: OD48.3x2.5mm, Steel Grade: S235. Surface treatment: Hot dip galvanized.



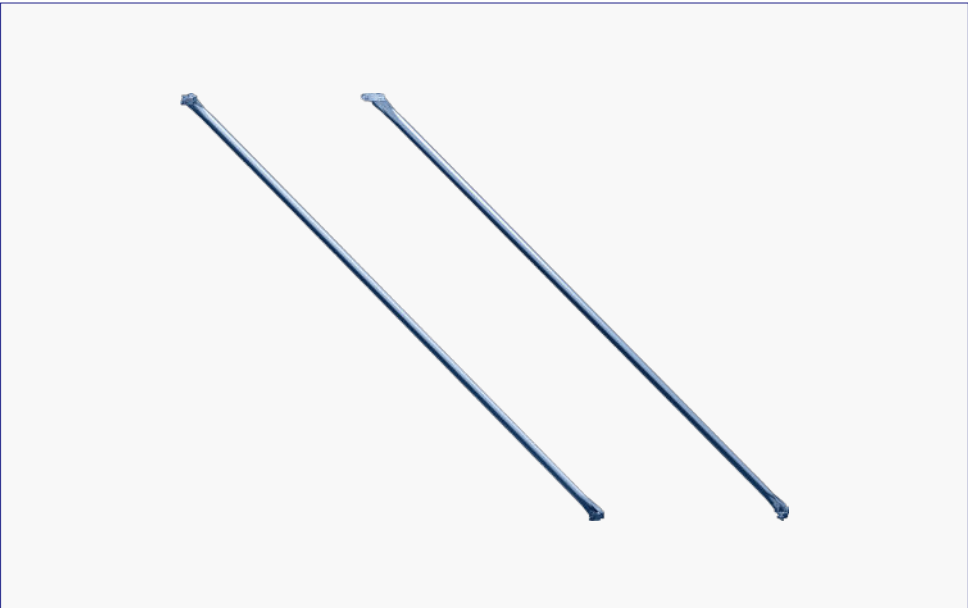
Item No.	Description	Size		Weight (kgs)		Packaging	
		Meters	Feet	Kgs	Lbs	Qty.	Type
RL0571	5'-2" Bay Brace 1572mm	1.572	5'-2"	8.94	19.69	150	Rack
RL1033	5'-4" Bay Brace 1625mm	1.625	5'-4"	9.03	19.89	150	Rack
RL0103	6' Bay Brace 1829mm	1.829	6'	9.39	20.68	150	Rack
RL0156	7' Bay Brace 2130mm	2.13	7'	9.98	21.98	150	Rack
RL0160	8' Bay Brace 2440mm	2.44	8'	10.63	23.41	150	Rack
RL1501	8'-6" Bay Brace 2572mm	2.572	8'-6"	10.92	24.05	150	Rack
RL0626	9' Bay Brace 2743mm	2.743	9'-10"	11.3	24.89	150	Rack
RL0109	10' Bay Brace 3050mm	3.05	10'	12.02	26.48	150	Rack

[Other sizes can be customized.](#)

# Ringlock Braces

## Swivel Clamp Brace 6'-6" (2.0m) Lift

The Bay Brace is used for the lateral bracing of Ringlock scaffolds. Tube size: OD48.3x2.5mm, Steel Grade: S235. Surface treatment: Hot dip galvanized.



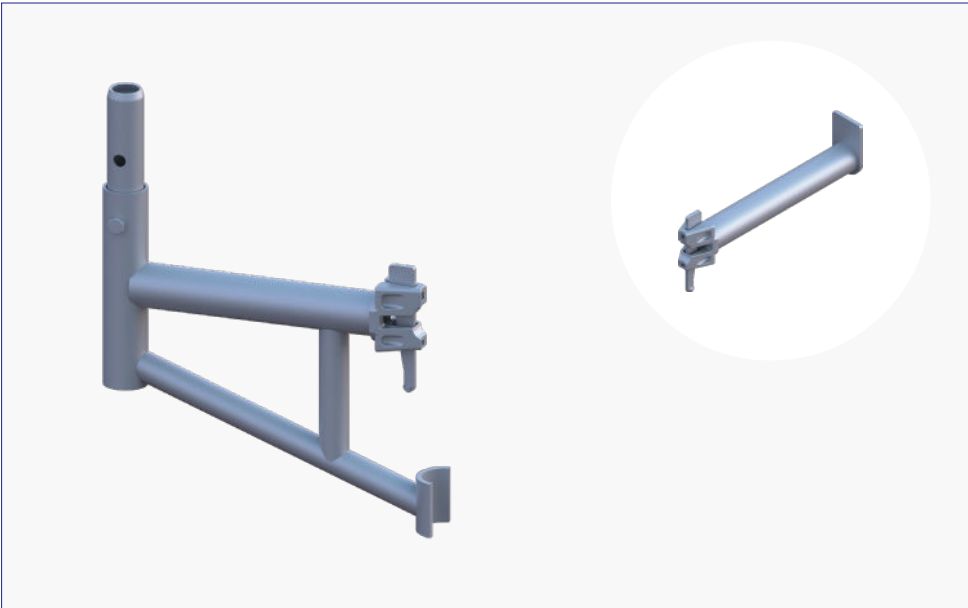
Item No.	Description	Size		Weight (kgs)		Packaging	
		Meters	Feet	Kgs	Lbs	Qty.	Type
RL1521	5' Swivel Clamp Brace 1524mm	1.524	5'	9.43	20.77	150	Rack
RL1468	7' Swivel Clamp Brace 2130mm	2.13	7'	10.61	23.37	150	Rack
RL1522	8' Swivel Clamp Brace 2440mm	2.44	8'	11.28	24.85	150	Rack
RL1496	8'-2" Swivel Clamp Brace 2500mm	2.50	8'-2"	11.41	25.13	150	Rack
RL1469	10' Swivel Clamp Brace 3050mm	3.05	10'	12.7	27.97	150	Rack

[Other sizes can be customized.](#)

Ringlock Brackets

Side/Hop-up Bracket O-Type

The side/hop-up bracket is used to extend the working platform closer to the building structure.  
Steel Grade: S235 or S355. Surface treatment: Hot dip galvanized.

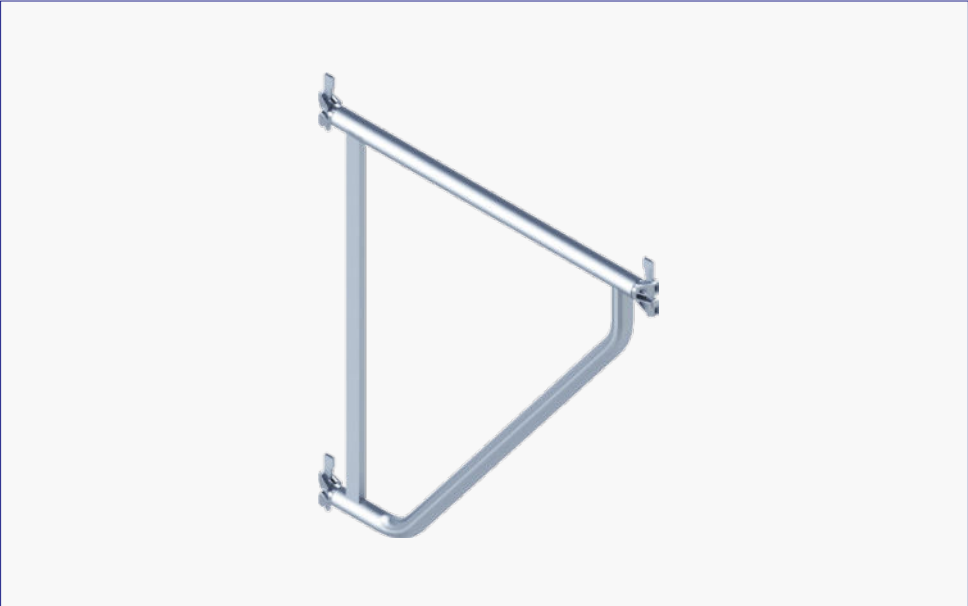


Item No.	Description	Size		Weight (kgs)		Packaging	
		Meters	Feet	Kgs	Lbs	Qty.	Type
RL0642	1' Side Bracket	0.31	1'	1.83	4.03	110	Rack
RL1523	2'2" Side Bracket	0.65	2'-2"	5.95	13.11	66	Rack
RL1490	2'5" Side Bracket	0.732	2'-5"	6.39	14.07	50	Rack
RL1524	2'10" Side Bracket	0.88	2'-10-5/8"	7.33	16.15	50	Rack
RL0270	3' Side Bracket	0.914	3'	7.5	16.52	50	Rack

# Ringlock Brackets

## Side/Console Bracket O-Type

The side/hop-up bracket is used at the edge of a scaffold to extend or widen the working platform. Steel Grade: S235. Surface treatment: Hot dip galvanized.



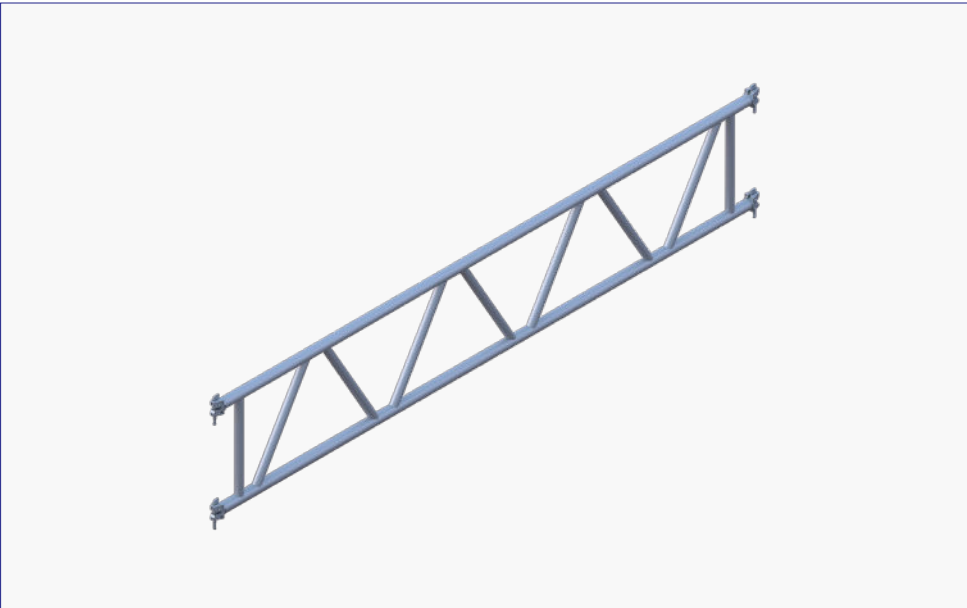
Item No.	Description	Size		Weight (kgs)		Packaging	
		Meters	Feet	Kgs	Lbs	Qty.	Type
RL1525	3'6" Side/Console Bracket O-Type	1.065	3'-6"	11.9	26.21	24	Rack
RL1491	3'7" Side/Console Bracket O-Type	1.09	3'-7"	12.08	26.61	24	Rack
RL1526	3'10" Side/Console Bracket O-Type	1.15	3'-10"	12.5	27.53	24	Rack



# Ringlock

## Lattice Girder, No Spigot 19.7" (0.5m)

The Lattice Girder is a horizontal member of Ringlock scaffolding that allows for bridging over large spans of 14'-28'. Steel Grade: S235. Surface treatment: Hot dip galvanized.



Item No.	Description	Size		Weight (kgs)		Packaging	
		Meters	Feet	Kgs	Lbs	Qty.	Type
RL1527	Lattice Girder 10'	3.05	10'	32.3	71.15	20	Bundle
RL1492	Lattice Girder 14'	4.26	14'	42.9	94.49	20	Bundle
RL1528	Lattice Girder 16'	4.88	16'	49.2	108.37	20	Bundle
RL1529	Lattice Girder 17'	5.18	17'	51.4	113.22	20	Bundle
RL1493	Lattice Girder 21'	6.39	21'	63.9	140.75	20	Bundle
RL1494	Lattice Girder 28'	8.52	28'	84.9	187.00	20	Bundle

# Ringlock

## Spigot Adapter Clamp (I-Bolt)

The spigot Adapter Clamp (I-Bolt) allows the connection of Ringlock Standards at intermediate locations along the length of O-Type Ledgers, Truss Ledgers and Girders.  
Surface treatment: Hot dip galvanized

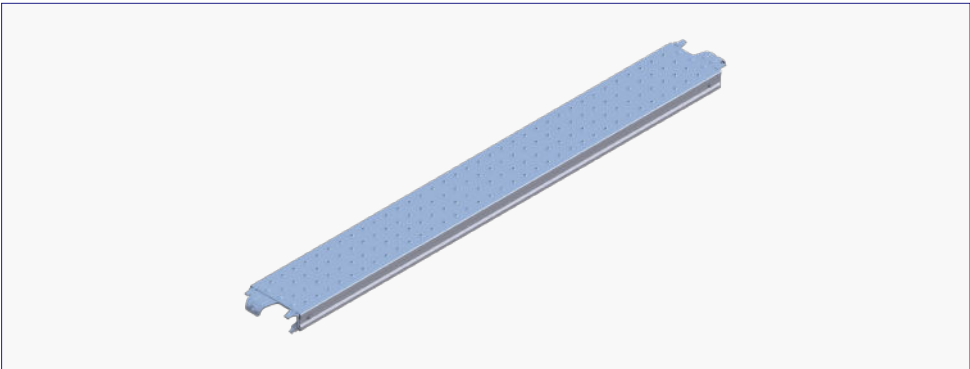


Item No.	Description	Weight (kgs)		Packaging	
		Kgs	Lbs	Qty.	Type
TC0298	Spigot Adapter Clamp (I- Bolt)	1.72	3.79	650	Rack+Insert

Work Platforms

Steel Plank O-Type 9.5" (240mm)

Ringlock Steel Plank, Width:9.5" (240mm), Height:70mm, Thickness:1.8mm.  
S355 Steel sheet(The equivalent A572 Gr. 50, USA, ASTM. Min.yield of 51,000 psi; Min. tensile of 68,000 psi), Surface treatment: Pre-galvanized.



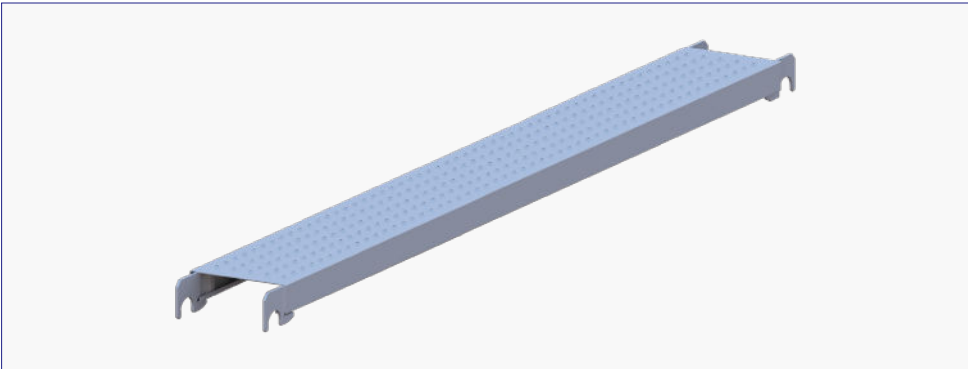
Item No.	Description	Size		Weight (kgs)		Packaging	
		Meters	Feet	Kgs	Lbs	Qty.	Type
WP0449	2' Low Profile Steel Plank	0.61	2'	4.94	10.79	120	Rack
WP0479	2'-2" Low Profile Steel Plank	0.65	2'-2"	5.15	11.34	120	Rack
WP0494	2'-10" Low Profile Steel Plank	0.88	2'-9"	6.37	14.03	120	Rack
WP0446	3' Low Profile Steel Plank	0.914	3'	6.55	14.43	120	Rack
WP0448	3'-6" Low Profile Steel Plank	1.065	3'-6"	7.35	16.19	60	Rack
WP0483	3'-10" Low Profile Steel Plank	1.15	3'-10"	7.80	17.18	60	Rack
WP0465	4' Low Profile Steel Plank	1.22	4'	8.17	18.00	60	Rack
WP0477	5' Low ProfileSteel Plank	1.524	5'	9.78	21.54	60	Rack
WP0478	5'-2" Low ProfileSteel Plank	1.572	5'-2"	10.04	22.11	60	Rack
WP0463	6' Low Profile Steel Plank	1.829	6'	11.40	25.11	60	Rack
WP0447	7' Low Profile Steel Plank	2.13	7'	13.00	28.63	60	Rack
WP0462	8' Low Profile Steel Plank	2.44	8'	14.63	32.22	60	Rack
WP0487	8'6" Low Profile Steel Plank	2.572	8'-6"	15.33	33.77	60	Rack
WP0436	10' Low Profile Steel Plank	3.05	10'	17.87	39.36	60	Rack

Other sizes can be customized.

Work Platforms

Steel Plank O-Type 9" (228mm)

Ringlock Steel Plank, Width:9" (228mm), Height:2.5" (63.5mm), Thickness:1.8mm.  
S235 Steel sheet, Surface treatment: Hot dip galvanized.



Item No.	Description	Size		Weight (kgs)		Packaging	
		Meters	Feet	Kgs	Lbs	Qty.	Type
WP0027	2' Steel Plank	0.60	2'	4.69	10.33	128	Rack
WP0028	2'-7" Steel Plank	0.788	2'-7"	5.71	12.58	64	Rack
WP0495	2'-10" Steel Plank	0.88	2'-10 5/8"	6.23	13.72	64	Rack
WP0029	3' Steel Plank	0.914	3'	6.43	14.16	64	Rack
WP0030	3'-6" Steel Plank	1.065	3'-6"	7.29	16.06	64	Rack
WP0032	4' Steel Plank	1.22	4'	8.17	18.00	64	Rack
WP0034	5' Steel Plank	1.524	5'	9.90	21.81	64	Rack
WP0041	5'-2" Steel Plank	1.572	5'-2"	10.17	22.40	64	Rack
WP0037	6' Steel Plank	1.829	6'	11.64	25.64	64	Rack
WP0039	7' Steel Plank	2.13	7'	13.36	29.43	64	Rack
WP0042	8' Steel Plank	2.44	8'	15.13	33.33	64	Rack
WP0409	8'-2" Steel Plank	2.5	8'2"	15.47	34.07	64	Rack
WP0045	9' Steel Plank	2.743	9'	16.85	37.11	64	Rack
WP0046	10' Steel Plank	3.05	10'	18.61	40.99	64	Rack

[Other sizes can be customized.](#)

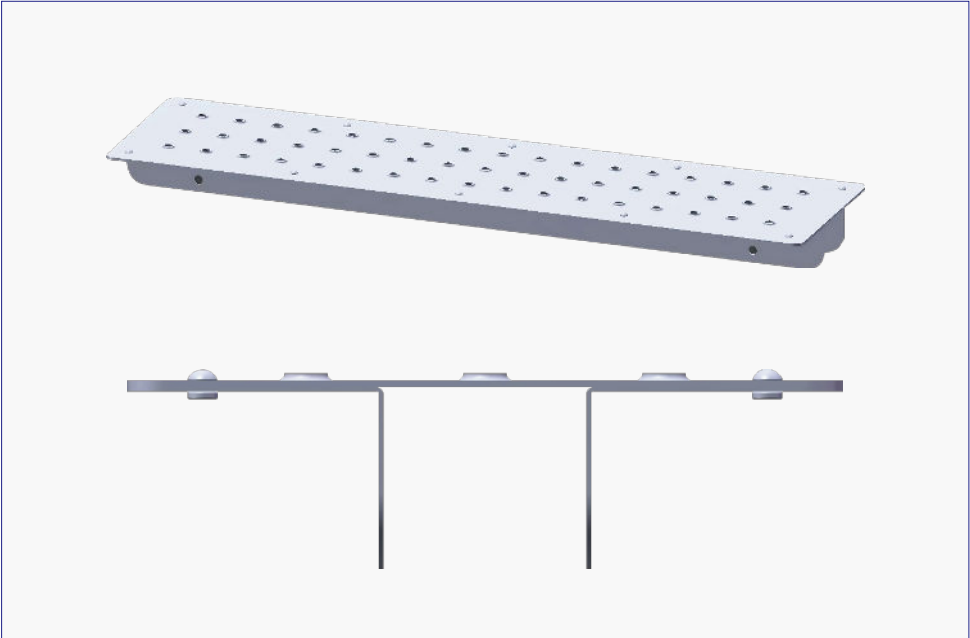
Work Platforms

Infill Plank - 7'5" (190mm)

Infill Plank, Width: 7'5" (190mm), Height: 48.2mm, Thickness:1.7mm.

Steel: S235, Surface treatment: Pre-galvanized.

Infill planks are used alongside steel planks to fill gaps in the scaffold deck, creating a safe and continuous working platform.



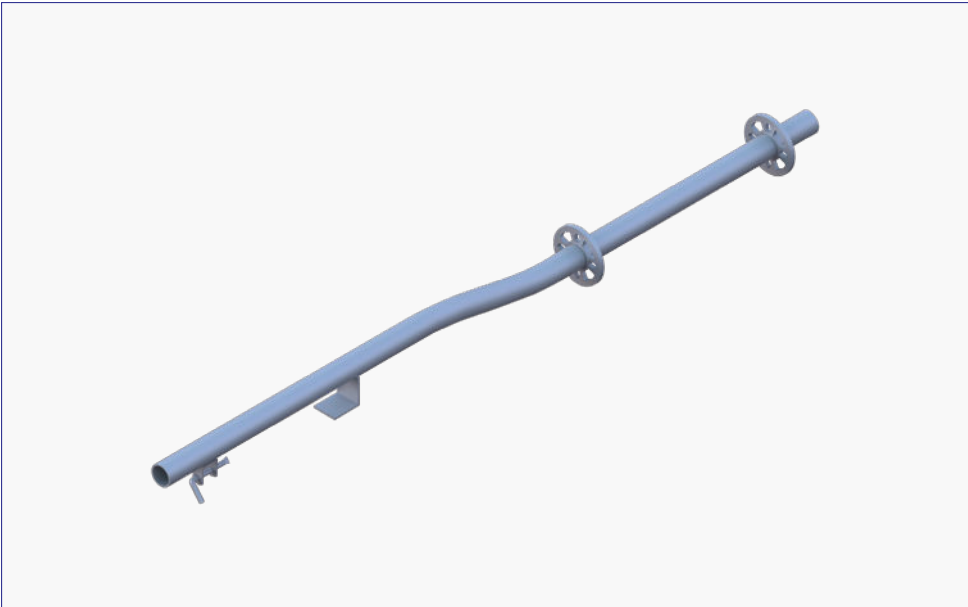
Item No.	Description	Size		Weight (kgs)		Packaging	
		Meters	Feet	Kgs	Lbs	Qty.	Type
WP0635	3'6" Infill Plank	1.065	3'6"	4.38	9.66	100	Rack
WP0636	5' Infill Plank	1.524	5'	6.54	14.42	100	Rack
WP0637	5'2" Infill Plank	1.572	5'2"	6.76	14.90	100	Rack
WP0638	7' Infill Plank	2.13	7'	9.39	20.70	100	Rack
WP0639	10' Infill Plank	3.05	10'	13.73	30.27	100	Rack

[Other sizes can be customized.](#)

# Access & Egress

## Guardrail Standard

The guardrail Standard is designed to provide a vertical connetion to secure Ledger.  
Tube size: OD48.3x3.2mm, Steel Grade:S355 (The equivalent A572 Gr. 50, USA, ASTM. Min.yield of 51,000 psi; Min. tensile of 68,000 psi). Surface treatment: Hot dip galvanized.

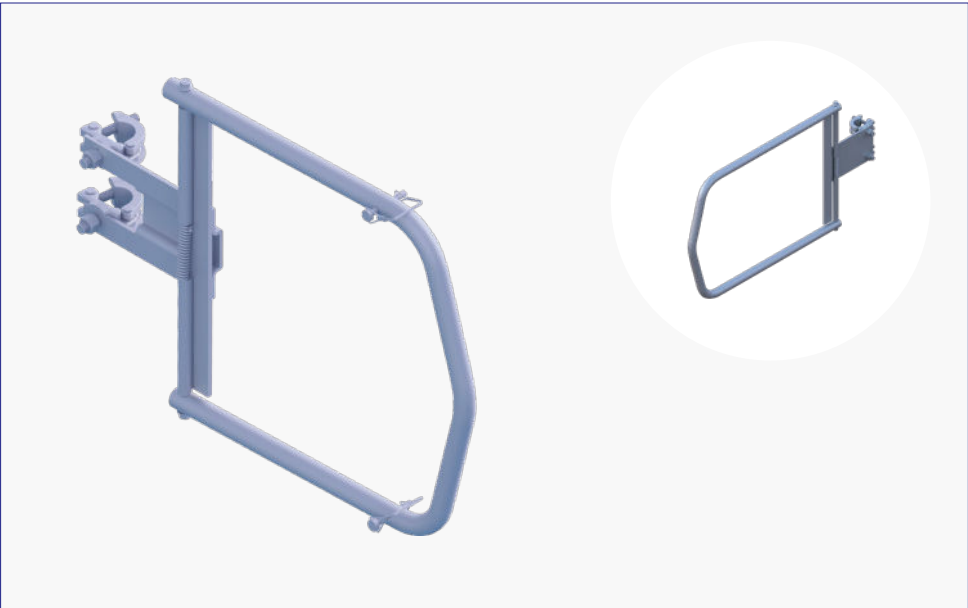


Item No.	Description	Size		Weight (kgs)		Packaging	
		Meters	Feet	Kgs	Lbs	Qty.	Type
RL1275	1.7M Guardrail Post	1.7	5'-6"	8.44	18.59	70	Rack

[Other sizes can be customized.](#)

## Safety Gate

The safety gate allows safe access to the working platform. The sprung gate mechanism ensures that the access opening remains fully closed when the scaffold is in use.



Item No.	Description	Min Extension		Max Extension		Packaging	
		Meters	Inches	Meters	Inches	Qty.	Type
AS0224	3'-5' Swing Gate	0.61	36	1.52	60.00	36	Rack
RL0016	Gate Expandable Safety Gate 35" to 56"	0.89	34.65	1.42	56.00	36	Rack

# Adjustable Base Jack

Ringlock adjustable base jack is used for leveling the scaffold-standards at the same height.  
OD: 38.1x4.5mm. Base plate: 150x150x6mm. Surface treatment: Hot dip galvanized or Electroplated.



Item No.	Description	Size		Weight (kgs)		Packaging	
		Meters	Feet	Kgs	Lbs	Oty.	Type
AS0020	24" Adjustable Base Jack	0.6	2'	3.48	7.67	220	Rack



## Swivel Base Jack

The swivel base jack can be used when standards need to be placed on slopes.  
OD: 38.1x4.5mm. Base plate: 150x150x6mm. Surface treatment: Hot dip galvanized or Electroplated.



Item No.	Description	Size		Weight (kgs)		Packaging	
		Meters	Feet	Kgs	Lbs	Qty.	Type
AS0021	24" Swivel Base Jack	0.6	2'	4.27	9.41	220	Rack

# Adjustable Caster Adapter

Caster Adapter is mainly used for connecting caster wheel to the vertical pole.



Item No.	Description	Size		Weight (kgs)		Packaging	
		Meters	Feet	Kgs	Lbs	Qty.	Type
RL0119	Adjustable Caster Adapert	0.315	9.75"	3.7	8.15	144	Rack+Inser

12" Caster Wheel

Scaffolding caster wheel is used at bottom of scaffolding vertical tube, enabling the scaffolding system to be a mobile Platform.



Item No.	Description	Size		Weight (kgs)		Packaging	
		Meters	Feet	Kgs	Lbs	Qty.	Type
RL0118	12" Caster Wheel	0.3	12"	19	41.85	144	Rack+Insert

## Starter/ Base Collar

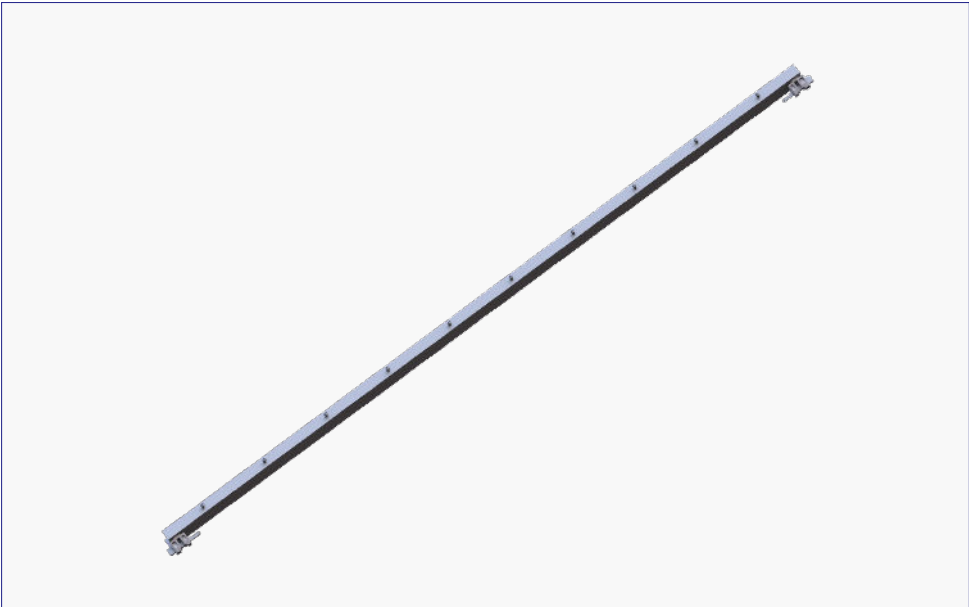
The base collar is the beginning of the Ringlock scaffolding system. It sits upon a fixed or adjustable base.



Item No.	Description	Size		Weight (kgs)		Packaging	
		Meters	Feet	Kgs	Lbs	Qty.	Type
RL0248	Starter/Base Collar	0.31	1'	1.74	3.83	385	Rack

# Staircase and Steps

Ringlock Staircase tower incorporate purpose designed stairway unites and offer a safer, quicker, more efficient route between levels on site.



Item No.	Description	Size		Weight (kgs)		Packaging	
		Meters	Feet	Kgs	Lbs	Qty.	Type
RL0328	Stair Stringer(2.0m lift)	2.13	7'	15.5	34.14	110	Rack

## Stair Tread

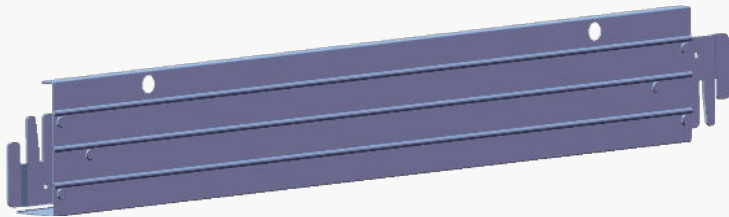
The stair tread is designed as the horizontal member connecting to the stair stringers (both 1.0m and 2.0m lift) providing the steps of the stair system.



Item No.	Description	Size		Weight (kgs)		Packaging	
		Meters	Feet	Kgs	Lbs	Qty.	Type
RL1443	32" Stair Tread, 305mm Steel Board	0.857	32"	8.5	18.72	69	Rack+Insert
RL0250	32" Stair Tread, 262mm Steel Board	0.857	32"	7.1	15.64	69	Rack+Insert

## Interlocking Toeboard

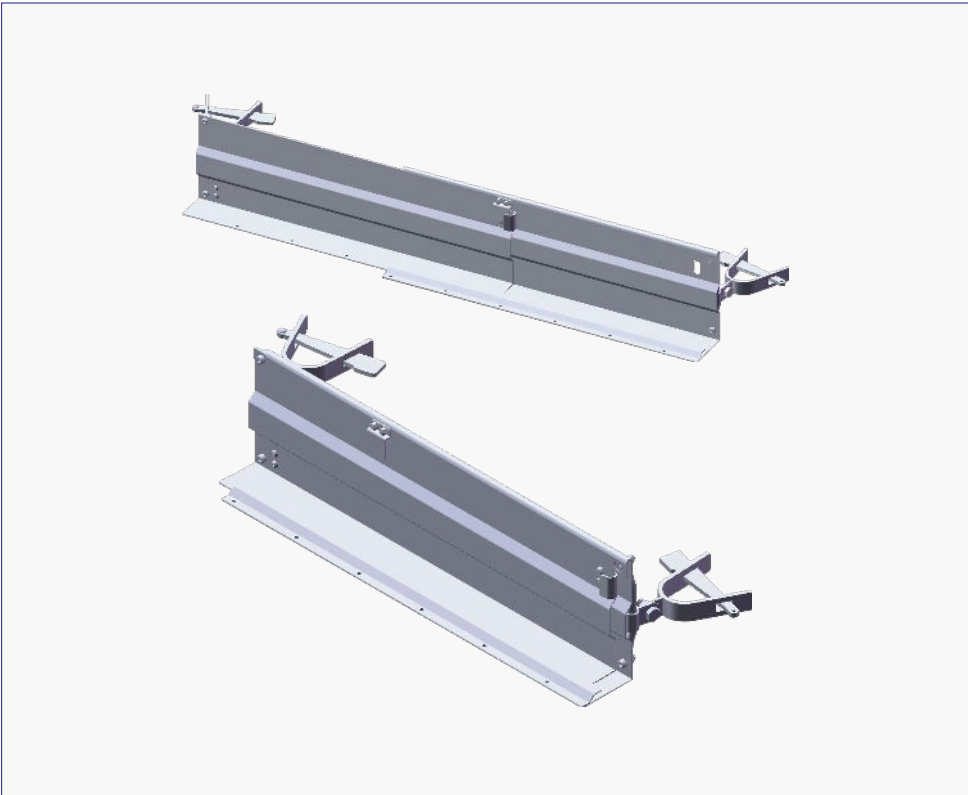
The interlocking toeboard is designed as the horizontal member connecting to provide a protection for scaffolding tools.



Item No.	Description	Size		Weight (kgs)		Packaging	
		Meters	Feet	Kgs	Lbs	Qty.	Type
WP0435	2'-2" Interlocking Toeboard	0.65	2'-2"	2.12	4.67	400	Rack
WP0496	2'-10" Interlocking Toeboard	0.88	2'-10"	2.77	6.10	400	Rack
WP0497	3' Interlocking Toeboard	0.91	3'	2.86	6.30	400	Rack
WP0498	3'-6" Interlocking Toeboard	1.065	3'-6"	3.29	7.25	200	Rack
WP0434	3'-10" Interlocking Toeboard	1.15	3'-10"	3.52	7.75	200	Rack
WP0499	5' Interlocking Toeboard	1.52	5'	4.57	10.07	200	Rack
WP0433	5'-2" Interlocking Toeboard	1.57	5'-2"	4.71	10.37	200	Rack
WP0500	6' Interlocking Toeboard	1.82	6'	5.43	11.96	200	Rack
WP0432	7' Interlocking Toeboard	2.13	7'	6.27	13.81	200	Rack
WP0501	8' Interlocking Toeboard	2.43	8'	7.14	15.73	200	Rack
WP0431	10' Interlocking Toeboard	3.05	10'	8.84	19.47	200	Rack

## Adjustable Toeboard

The adjustable toeboard works with both system and frame scaffolds. Its adjustable design covers different bay lengths using only three standard sizes.



Item No.	Description	Size		Weight (kgs)		Packaging	
		Meters	Feet	Kgs	Lbs	Qty.	Type
WP0520	24"-38" Adjustable Toeboard	0.605-0.965	24"-38"	5.39	11.88	80	Rack
WP0521	38"-66" Adjustable Toeboard	0.962-1.677	38"-66"	7.84	17.28	80	Rack
WP0522	66"-120" Adjustable Toeboard	1.650-3.053	66"-120"	12.57	27.71	80	Rack



## Non-Slip Steel Ladder

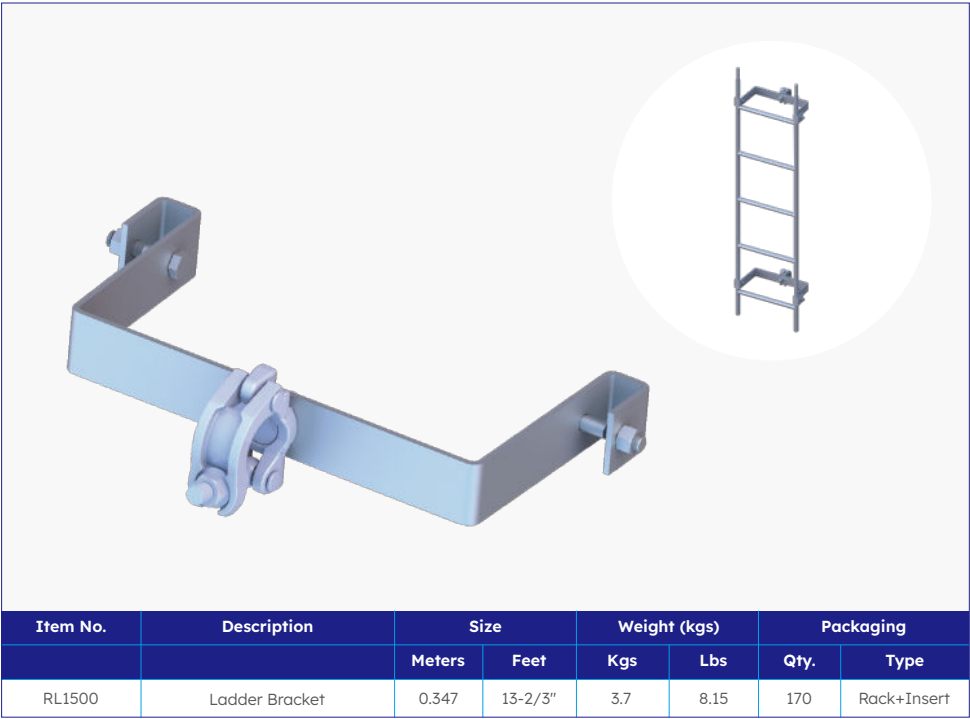
The Non-Slip Steel Ladder is designed to attach (using Ladder Brackets) on the inside or outside of a scaffold to provide safe access to the various deck levels. Width: 13-2/3”(347mm).



Item No.	Description	Size		Weight (kgs)		Packaging	
		Meters	Feet	Kgs	Lbs	Qty.	Type
RL1497	3' Non-Slip Steel Ladder	0.91	3'	6.81	15.00	25	Rack
RL1498	5' Non-Slip Steel Ladder	1.52	5'	9.74	21.45	25	Rack
RL1499	10' Non-Slip Steel Ladder	3.05	10'	18.54	40.84	25	Rack

Ladder Bracket

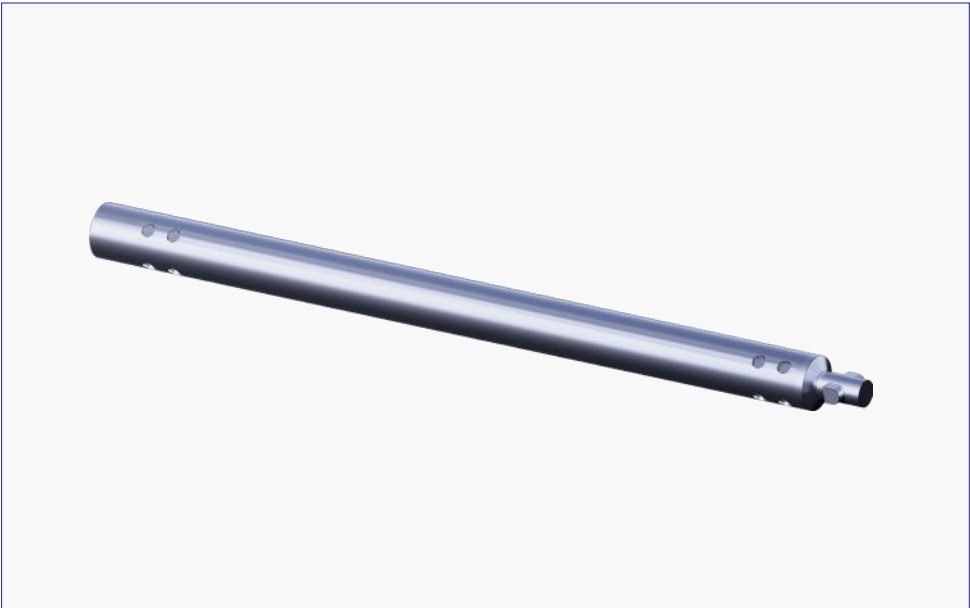
The Ladder bracket is designed to attach the ladders to the vertical or horizontal members of the scaffold tower. Width: 13-2/3”(347mm).



Item No.	Description	Size		Weight (kgs)		Packaging	
		Meters	Feet	Kgs	Lbs	Qty.	Type
RL1500	Ladder Bracket	0.347	13-2/3"	3.7	8.15	170	Rack+Insert

## Tube Lock / Interlock Tubes

The interlock tubes are designed to used as bay braces for flexiable usage.  
Tube size: OD48.3x2.5mm, Steel Grade: S235. Surface treatment: Hot dip galvanized.

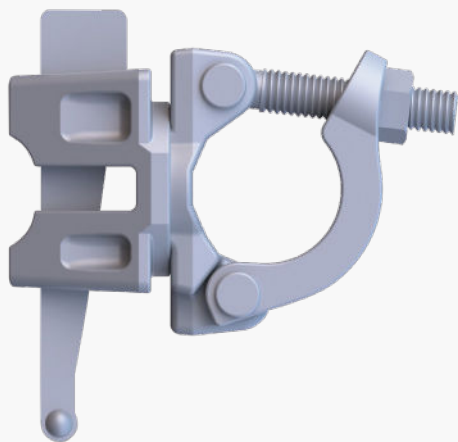


Item No.	Description	Size		Weight (kgs)		Packaging	
		Meters	Feet	Kgs	Lbs	Qty.	Type
TC0179	4' Interlock Tubes	1.22	4'	5.71	12.58	150	Rack
TC0180	6' Interlock Tubes	1.83	6'	7.37	16.23	150	Rack
TC0181	8' Interlock Tubes	2.44	8'	9.03	19.89	150	Rack
TC0182	10' Interlock Tubes	3.05	10'	10.69	23.55	150	Rack
TC0183	13' Interlock Tubes	3.96	13'	13.17	29.01	150	Rack

## Ringlock Accessories

### Right Angle Adapter Clamp

The right angle wedge head coupler is designed to easily join a scaffold tube directly to the rosette at 90 degrees.

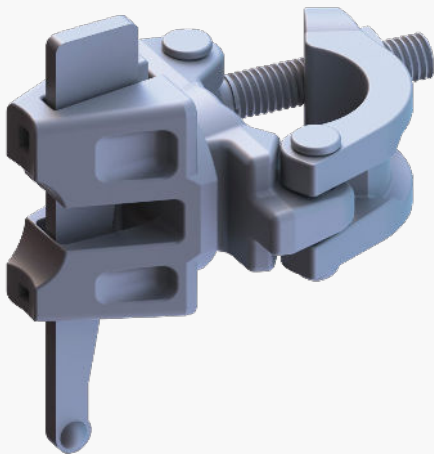


Item No.	Description	Weight (kgs)		Packaging	
		Kgs	Lbs	Qty.	Type
RL1110	Wedge head coupler, right angle, I bolt	1.59	3.50	650	Rack+Insert

## Ringlock Accessories

### Wedge head swivel coupler

The swivel adapter clamp is designed to easily join a scaffold tube to the rosette of a Ringlock scaffold producing a variety of angles and configurations.

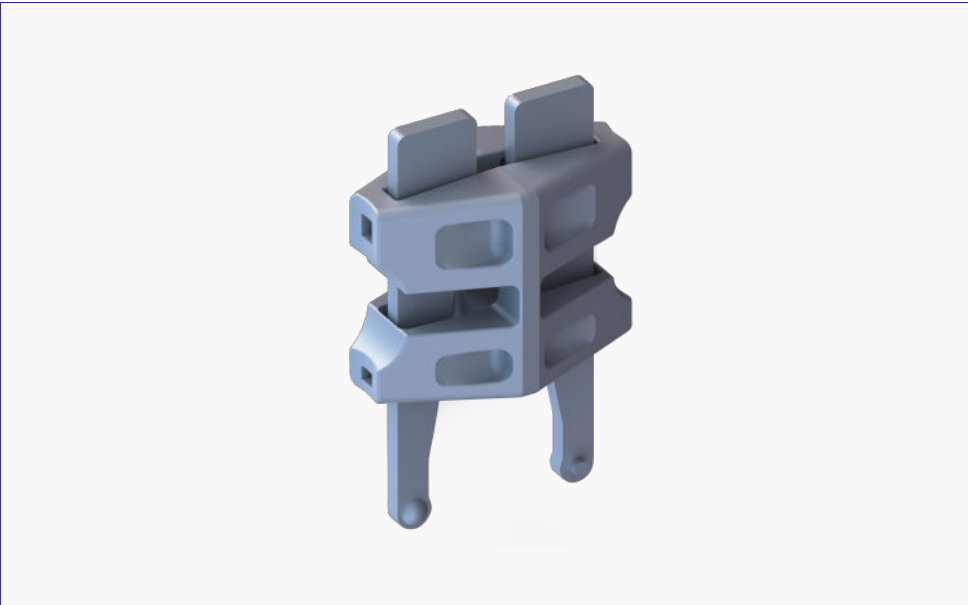


Item No.	Description	Weight (kgs)		Packaging	
		Kgs	Lbs	Qty.	Type
RL1530	Wedge head coupler, swivel, I bolt	1.61	3.55	650	Rack+Insert

# Ringlock Accessories

## Wedge head coupler

Wedge head coupler allows the connection of ringlock standards to enforce its strength.

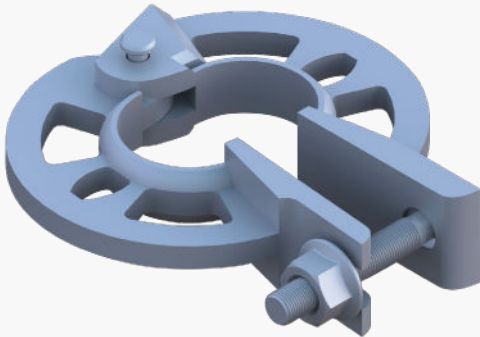


Item No.	Description	Weight (kgs)		Packaging	
		Kgs	Lbs	Qty.	Type
RL1314	Wedge head coupler	1.32	2.91	650	Rack+Insert

## Ringlock Accessories

### Rosette Clamp

The rosette clamp is used to add a rosette at any point on a vertical standard or tube.  
Surface treatment: Hot dip galvanized.



Item No.	Description	Weight (kgs)		Packaging	
		Kgs	Lbs	Qty.	Type
TC0297	Rosette Clamp, 22mm	1.25	2.75	750	Rack+Insert

## Ringlock Accessories

### Right Angle Clamp

The right angle wedge head coupler is designed to easily join a scaffold tube directly to the rosette at 90 degrees.



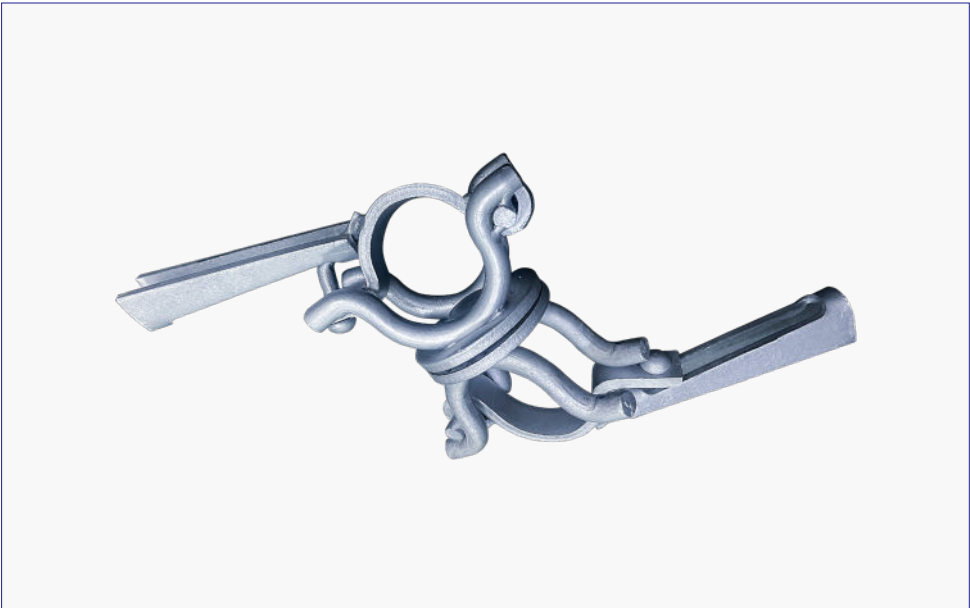
Item No.	Description	Weight (kgs)		Packaging	
		Kgs	Lbs	Qty.	Type
TC0024	Right Angle Clamp (Wedge)	1.5	3.30	500	Rack+Insert



## Ringlock Accessories

### Swivel Clamp (Wedge)

The swivel adapter clamp is designed to easily join a scaffold tube to the rosette of a Ringlock scaffold producing a variety of angles and configurations.



Item No.	Description	Weight (kgs)		Packaging	
		Kgs	Lbs	Qty.	Type
TC0189	Swivel Clamp (Wedge)	1.69	3.72	500	Rack+Insert

## Ringlock Accessories

### Beam Clamp

The beam clamp is designed to be connected with Steel I Beams.  
Surface treatment: Hot dip galvanized.



Item No.	Description	Weight (kgs)		Packaging	
		Kgs	Lbs	Qty.	Type
TC0296	Beam Clamp	1.45	3.19	1000	Rack+Insert

Ringlock Accessories

Swivel Beam Clamp

The swivel beam clamp is designed to be connected with Steel I Beams.  
Surface treatment: Hot dip galvanized.

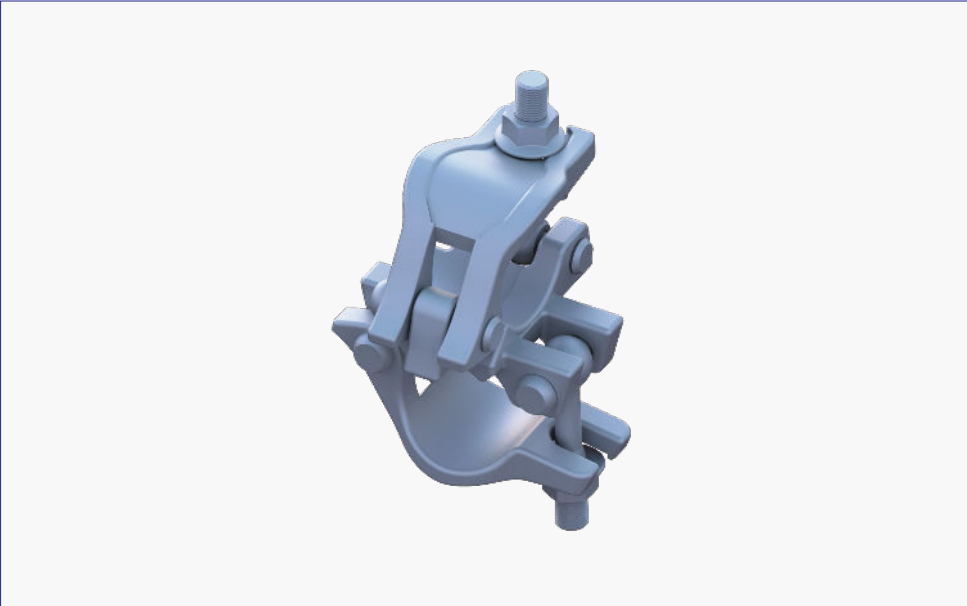


Item No.	Description	Weight (kgs)		Packaging	
		Kgs	Lbs	Qty.	Type
TC0295	Swivel Beam Clamp	1.80	3.96	1000	Rack+Insert

Ringlock Accessories

Right Angle Clamp (I-Bolt)

The right angle clamp (I-Bolt) is designed to be used in conjunction with scaffold tube to create 90 degree angles. Surface treatment: Hot dip galvanized.



Item No.	Description	Weight (kgs)		Packaging	
		Kgs	Lbs	Qty.	Type
TC0294	Right Angle Clamp	1.50	3.30	700	Rack+Insert

Ringlock Accessories

Swivel Clamp (I-Bolt)

The swivel clamp (I-Bolt) is designed to be used in conjunction with scaffold tube to create a variety of angles. Surface treatment: Hot dip galvanized.



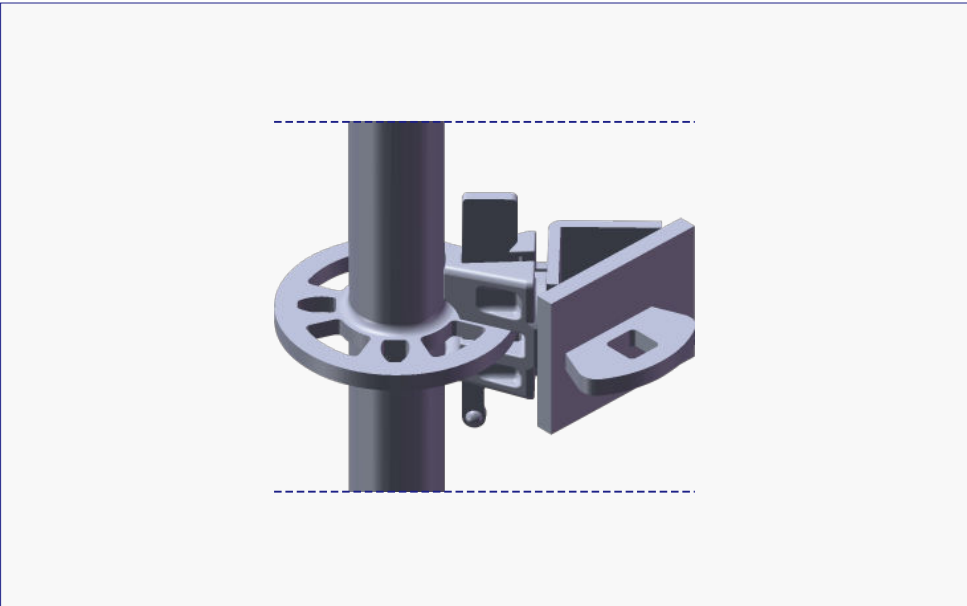
Item No.	Description	Weight (kgs)		Packaging	
		Kgs	Lbs	Qty.	Type
TC0293	Swivel Clamp	1.80	3.96	700	Rack+Insert

Product available in a Nut Size of 21mm (UK), 22mm (7/8" N. America) and 23mm (Aus.)

Ringlock Accessories

Ledger Head Bracket

The Ledger Head Bracket provides the correct connection angle for braces, reducing pinch points. Surface Treatment: Hot dip galvanized.

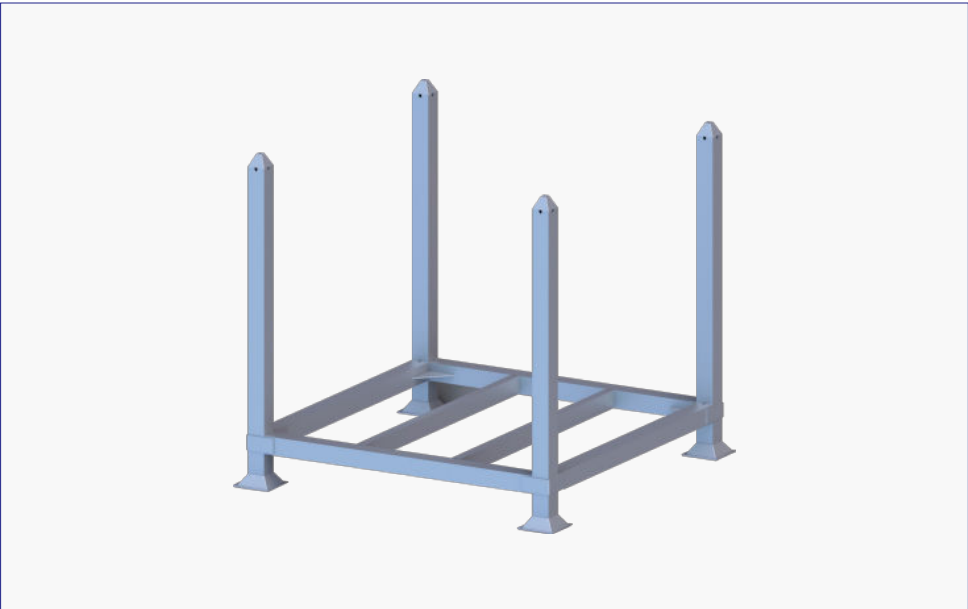


Item No.	Description	Weight (kgs)		Packaging	
		Kgs	Lbs	Qty.	Type
AS0633	Ledger Head Bracket, Right	1.85	4.08	500	Rack+Insert
AS0628	Ledger Head Bracket, Left	1.85	4.08	500	Rack+Insert

# Ringlock Accessories

## Scaffold Rack

The scaffold rack is deisnged to load scaffolding components for transportation.

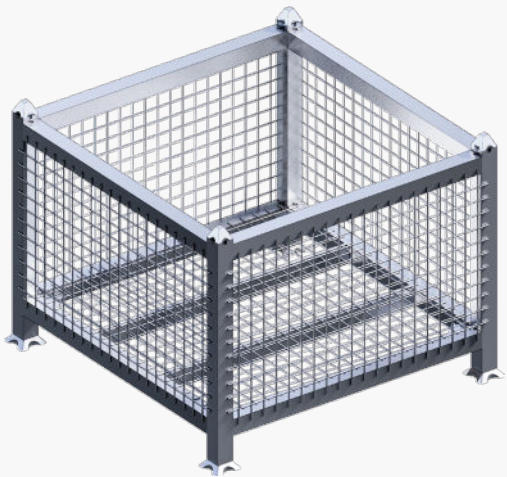


Item No.	Description	Weight (kgs)		Packaging	
		Kgs	Lbs	Qty.	Type
AS0180	Scaffold Rack 42"x42"x34.25" (1060x1060x870mm)	46	101.32	1	Rack

# Ringlock Accessories

## Scaffold Basket Rack

The scaffold rack is deisnged to load scaffolding components for transportation.



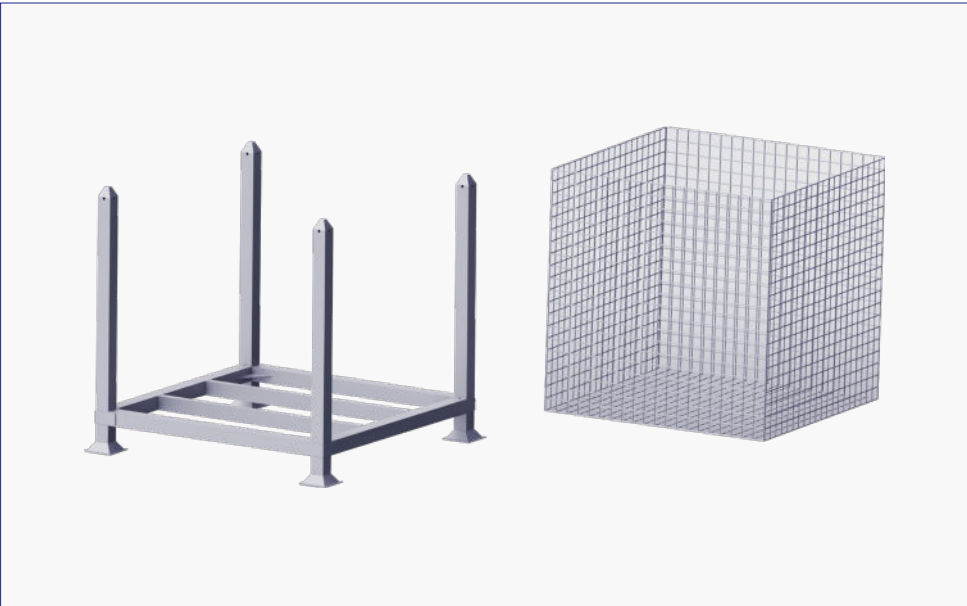
Item No.	Description	Weight (kgs)		Packaging	
		Kgs	Lbs	Qty.	Type
AS0203	Scaffold Basket Rack 42"x42"x34.25" (1060x1060x870mm)	60	132.16	1	Rack



## Ringlock Accessories

### Scaffold Cage Insert

The scaffold cage insert is designed to fit into the storage rack, to create the basket for storage of clamps and accessories.



Item No.	Description	Weight (kgs)		Packaging	
		Kgs	Lbs	Qty.	Type
AS0384	Scaffold Cage Insert (40"x40"x33")	23.45	51.65	1	Rack



## **RINGLOCK SYSTEM**

**North America**



### **CHINA**

5 Xingnan Street, Suzhou, Jiangsu 215021

### **USA**

HOUSTON, TX: 1611 Peach Leaf St, Suite 101 Houston TX 77039

Toll Free. 844-821-0036

### **EMAIL**

[coronet@scaffolding.com](mailto:coronet@scaffolding.com)

### **WEB**

[www.scaffolding.com](http://www.scaffolding.com)

We are the leading scaffolding supplier.

CORONET 2026